



**HUNTERS**<sup>®</sup>  
HERE TO GET *you* THERE

 4  2  1  **HUNTERS** 



# Ranelagh Gardens, Southampton, SO15 2TH

## Offers In Excess Of £250,000



**\*\*ATTENTION INVESTORS\*\*** Four bedroom HMO with C4 use.

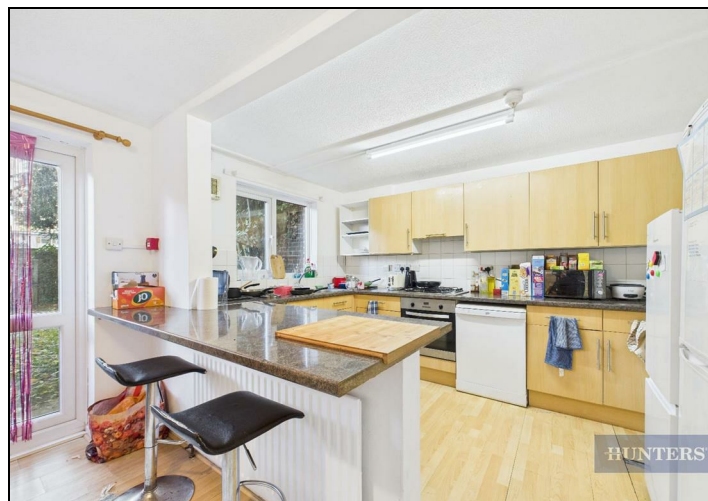
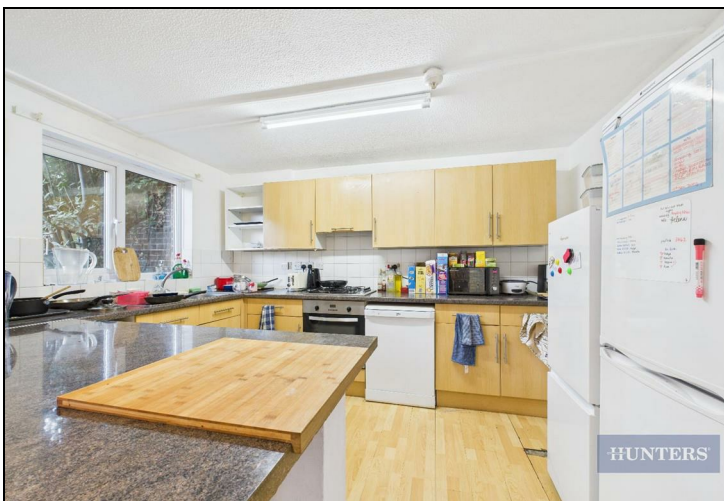
This three storey townhouse is situated in the popular location of Banister Park, Southampton and is ideally situated for easy access to Southampton city centre with its comprehensive range of amenities with numerous bars, restaurants and shopping facilities, including the West Quay shopping complex. Southampton railway station can be found nearby. The M3 can be accessed via The Avenue.

The accommodation comprising 4 double bedrooms, a welcoming entrance hall, a lounge, kitchen/diner and French doors to a rear garden, two bathrooms, and a cloakroom.  
Gas central heating, and integral garage

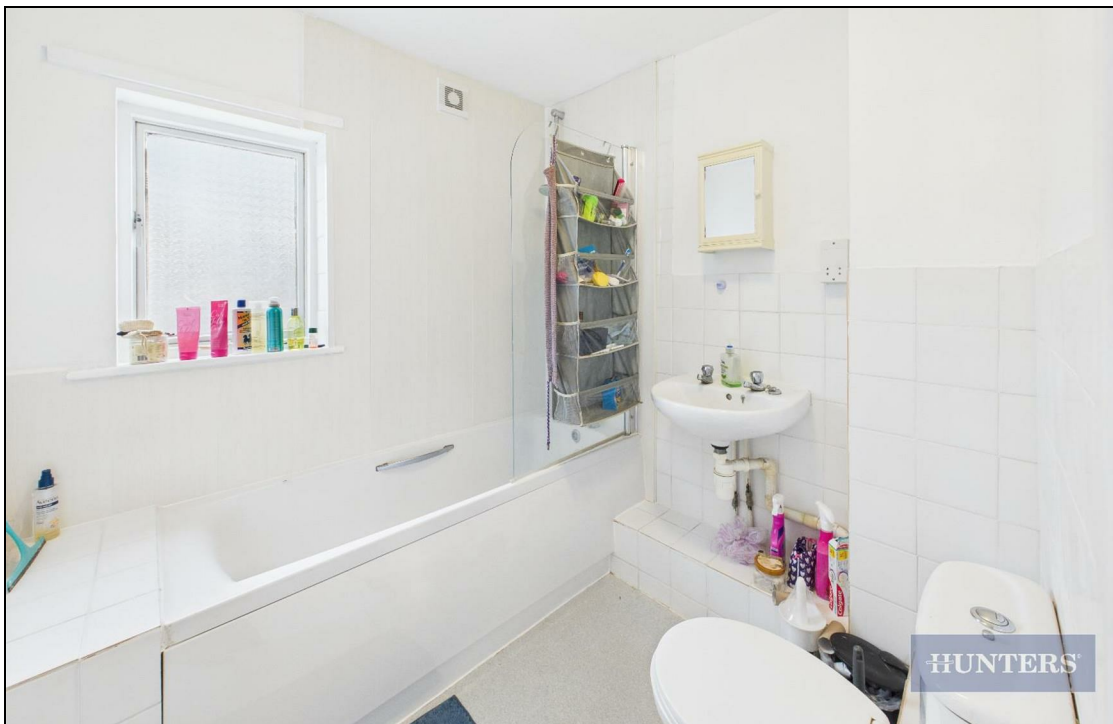
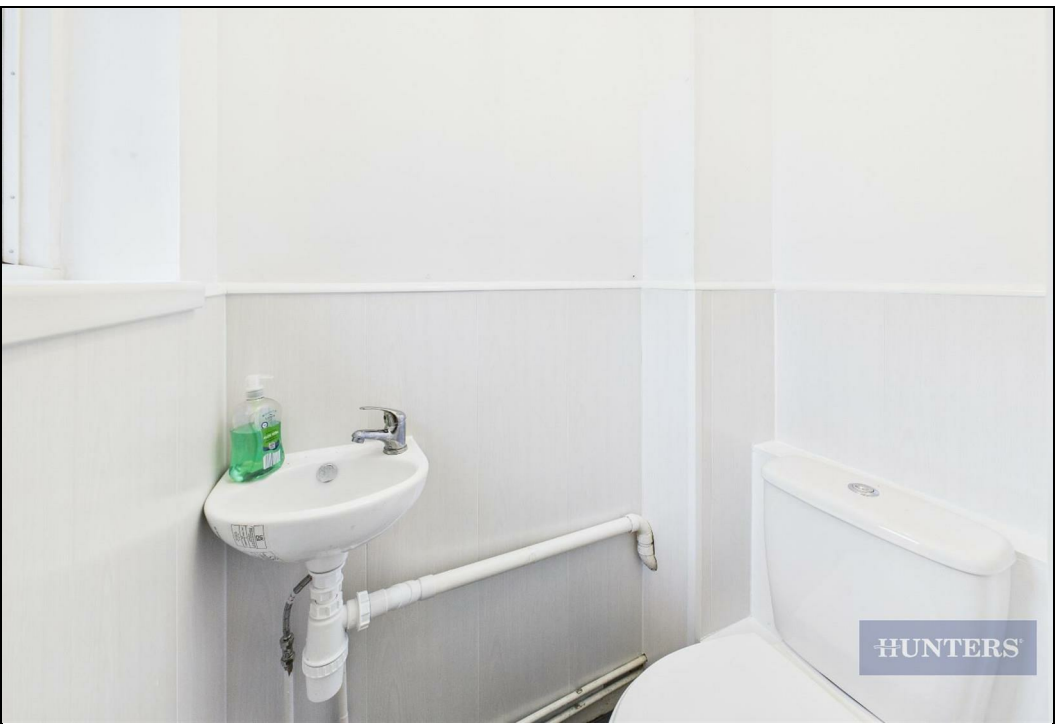
The property is currently let until June 2026 at £1,750pcm

## KEY FEATURES

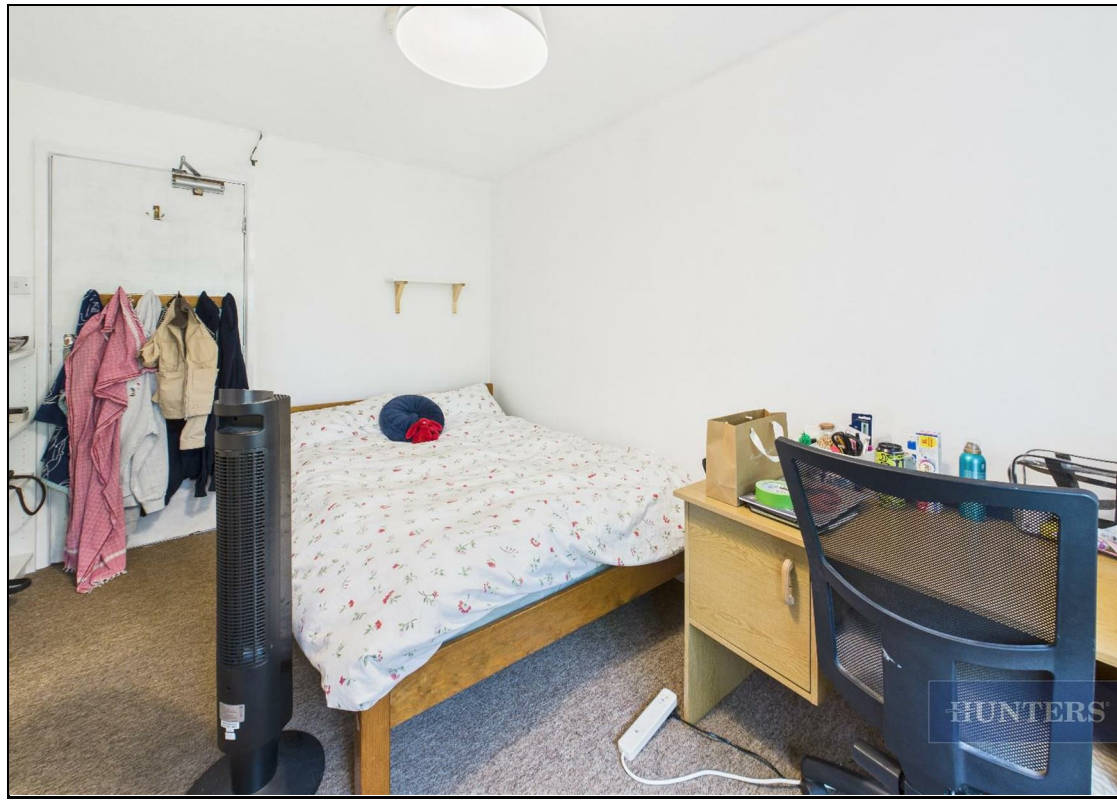
- Four Double bedrooms
- Bathroom on first floor
- Bathroom on second floor
- Ground floor W.C
- Let at £1750pcm until June 2026
- Rear garden
- 23 SqM Lounge
- Garage
- Quiet cul-de sac location



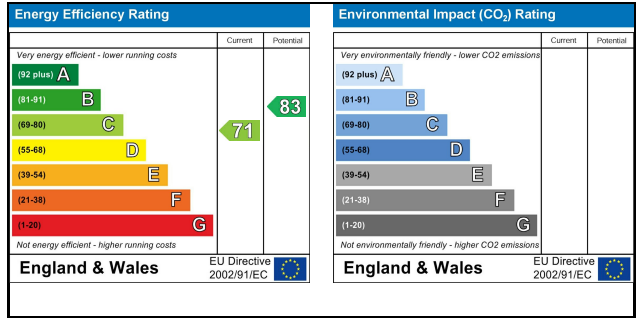
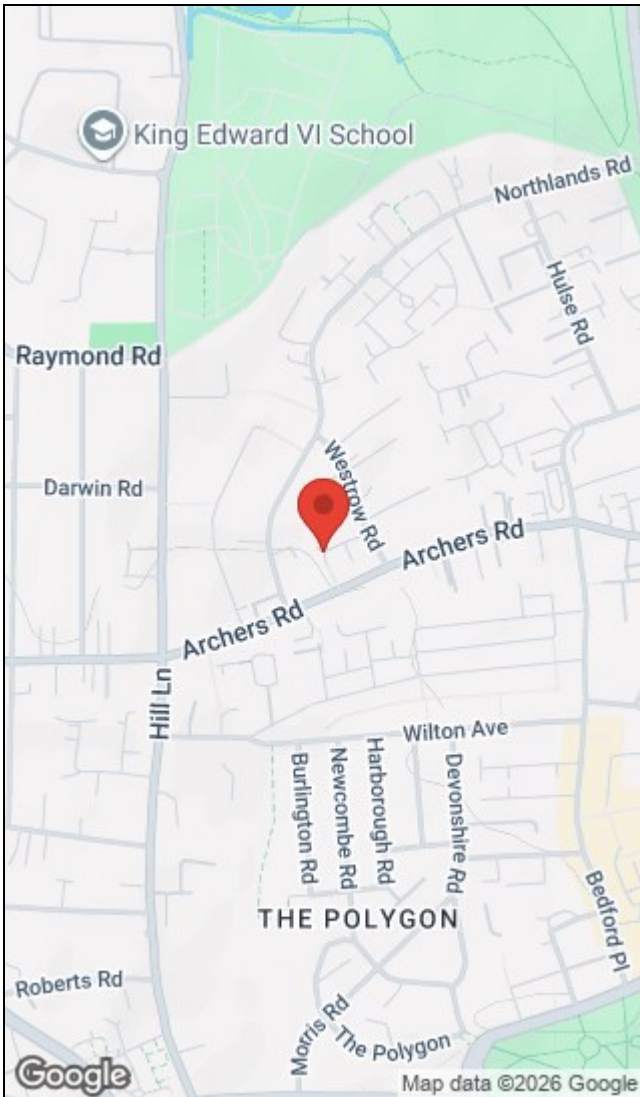












38 Bedford Place, Southampton, Hampshire, SO15 2DG | 02380 987 720  
[southampton@hunters.com](mailto:southampton@hunters.com) | [www.hunters.com](http://www.hunters.com)

