



A CONTEMPORARY FIVE BEDROOM, THREE BATHROOM TOWNHOUSE IN A SOUGHT AFTER AREA

Dukes Place, Watford Road, Croxley Green, Rickmansworth, Hertfordshire, WD3 3DP

ROBSONS

Dukes Place, Watford Road, Croxley Green,
Rickmansworth, Hertfordshire, WD3 3DP

**KITCHEN/RECEPTION ROOM • DOWNSTAIRS
WC • RECEPTION ROOM • PRINCIPAL
BEDROOM WITH EN-SUITE • FOUR FURTHER
BEDROOMS • TWO FAMILY BATHROOMS •
REAR GARDEN • INTEGRAL GARAGE •
DRIVEWAY**

Description

Rarely available five-bedroom family home, situated within the historical catchment for the Outstanding-rated Harvey Road Primary and Rickmansworth Schools (subject to annual admissions criteria).

The ground floor comprises a welcoming entrance hall with guest cloakroom, a modern fitted kitchen with granite work surfaces, and a spacious reception room featuring French doors that open onto a well-maintained rear garden laid with low-maintenance AstroTurf.





The first floor offers a further reception room with French doors and a Juliet balcony, along with two well-proportioned bedrooms, one of which is being used as an office, and a contemporary family shower room.

On the second floor there is a generous light-filled master bedroom with fitted wardrobes and en-suite facilities, a further good-sized double bedroom also with fitted wardrobes, and a family bathroom. An additional well proportioned double bedroom with a skylight is located on the third floor, providing flexible accommodation.

Further benefits include an integral garage and off-street parking.

Location

Picturesque Croxley Green provides the perfect backdrop as it offers village charm in the rural suburbs of Hertfordshire. The property is within easy reach of Croxley Green and Rickmansworth town centre with its wide range of boutique shops, coffee houses, restaurants. The Metropolitan and Chiltern line train services connects you to London Baker Street, Marylebone Station and beyond. The area is well served for good quality private and state schools for all ages.

Additional Information

Tenure: Freehold

Local Authority: Three Rivers District Council

Council Tax Band: F

Energy Efficiency Rating: C

For additional information, please refer to www.robsonswb.com or call us on: 01923 777762.



Approximate Gross Internal Area
 Ground Floor = 51.7 sq m / 556 sq ft
 First Floor = 50.9 sq m / 548 sq ft
 Second Floor = 50.7 sq m / 546 sq ft
 Third Floor = 19.5 sq m / 210 sq ft
 Total = 172.8 sq m / 1,860 sq ft
 (Including Garage / Excluding Eaves)

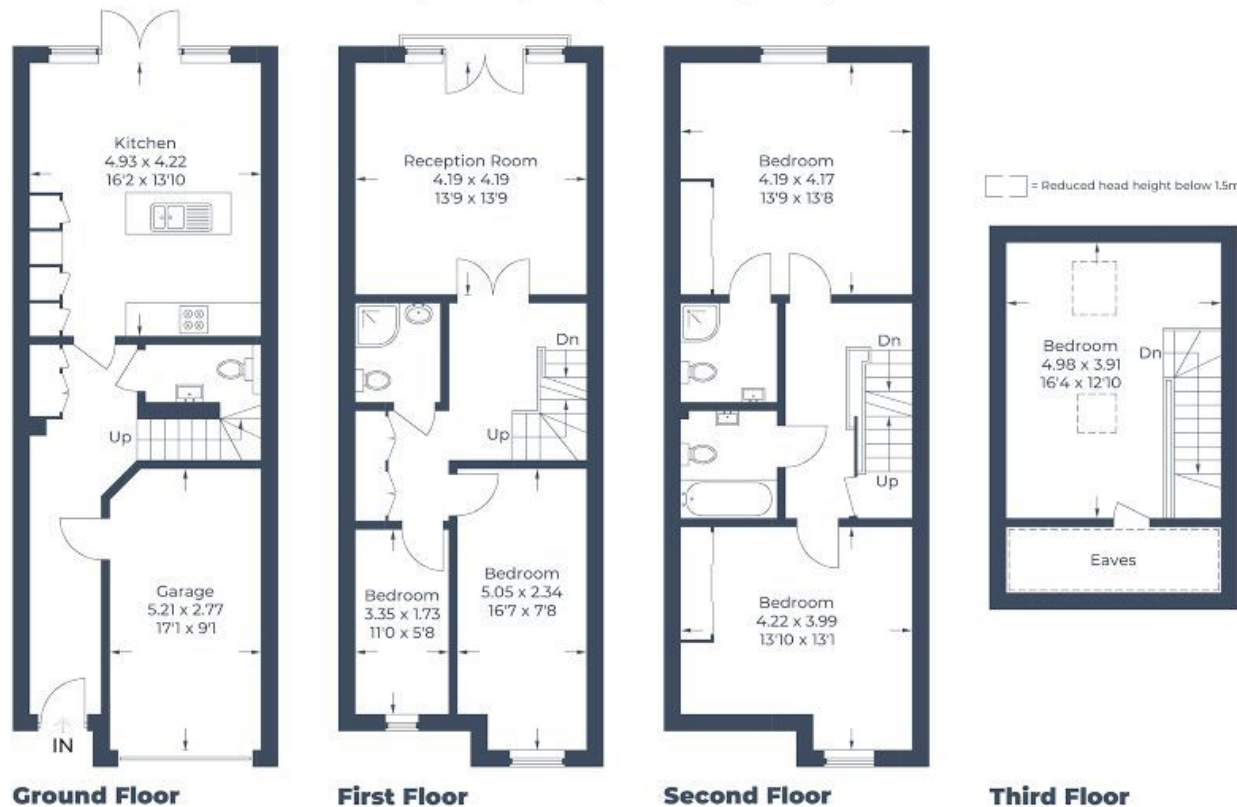


Illustration for identification purposes only,
 measurements are approximate, not to scale.
 © CJ Property Marketing Produced for Robsons



130 High Street, Rickmansworth WD3 1AB
 Tel: 01923 777762 Email: rickmansworth@robsonswb.com
www.robsonswb.com



Important notice: Robsons, their clients and any joint agents give notice that 1: They are not authorised to make or give any representations or warranties in relation to the property either here or elsewhere, either on their own behalf or on behalf of their client or otherwise. They assume no responsibility for any statement that may be made in these particulars. These particulars do not form part of any offer or contract and must not be relied upon as statements or representations of fact. 2: Any areas, measurements or distances are approximate. Plot sizes and dimensions are taken from Promap and are approximate. The text, photographs and plans are for guidance only and are not necessarily comprehensive. It should not be assumed that the property has all necessary planning, building regulation or other consents and Robsons have not tested any services, equipment or facilities. Purchasers must satisfy themselves by inspection or otherwise.