



Directions

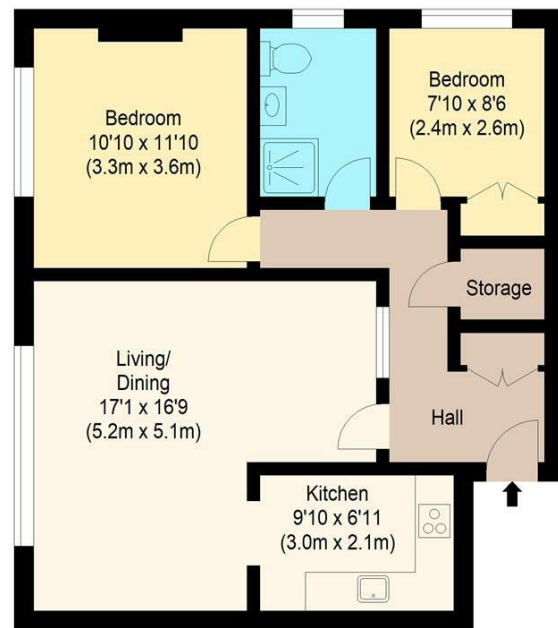
Viewings

Viewings by arrangement only. Call 02085042440 to make an appointment.

EPC Rating

E

Energy Efficiency Rating		Current	Potential
Very energy efficient - lower running costs			
(92 plus) A			
(81-91) B			
(69-80) C			
(55-68) D			
(39-54) E		45	
(21-38) F			
(1-20) G			
Not energy efficient - higher running costs			
England & Wales		EU Directive 2002/91/EC	



Ground Floor

william rose
Torfell

Approximate Gross Internal Floor Area: 67.88 sq m / 731 sq ft



Measured according to RICS IPMS2. Floor plan is for illustrative purposes only and is not to scale. Every attempt has been made to ensure the accuracy of the floor plan shown, however all measurements, fixtures, fittings and data shown are an approximate interpretation for illustrative purposes only. 1 sq m = 10.76 sq feet.

lpaplus.com

Date: 5/8/2024



1 Torfell Grove Hill, London, Essex, E18 2JH

£1,850 Per Month

- Two bedroom ground floor flat
- Large lounge
- Modern shower room
- Communal garden area
- EPC E
- Popular development
- Luxury fitted kitchen
- Security entry system
- Close to shops and Central Line station
- Council Tax C

1 Torfell Grove Hill, London E18 2JH

Nestled in the desirable area of Grove Hill, London, this recently refurbished two-bedroom ground floor flat offers a perfect blend of modern living and convenience. Spanning an impressive 753 square feet, the property boasts a luxury fitted kitchen and bathroom, ensuring a comfortable and stylish lifestyle.

The flat is situated within a popular development, making it an attractive option for those seeking a vibrant community atmosphere. Residents will appreciate the proximity to South Woodford's charming shops and cafes, which are just a short stroll away. Additionally, the Central Line station is conveniently located nearby, providing easy access to the heart of London and beyond.

This property is ideal for individuals or families looking for a contemporary home in a sought-after location. With its thoughtful design and high-quality finishes, this flat is sure to impress. Don't miss the opportunity to make this stunning property your new home.



Council Tax Band: C

