



Kidbrooke Park Close, SE3

£325,000

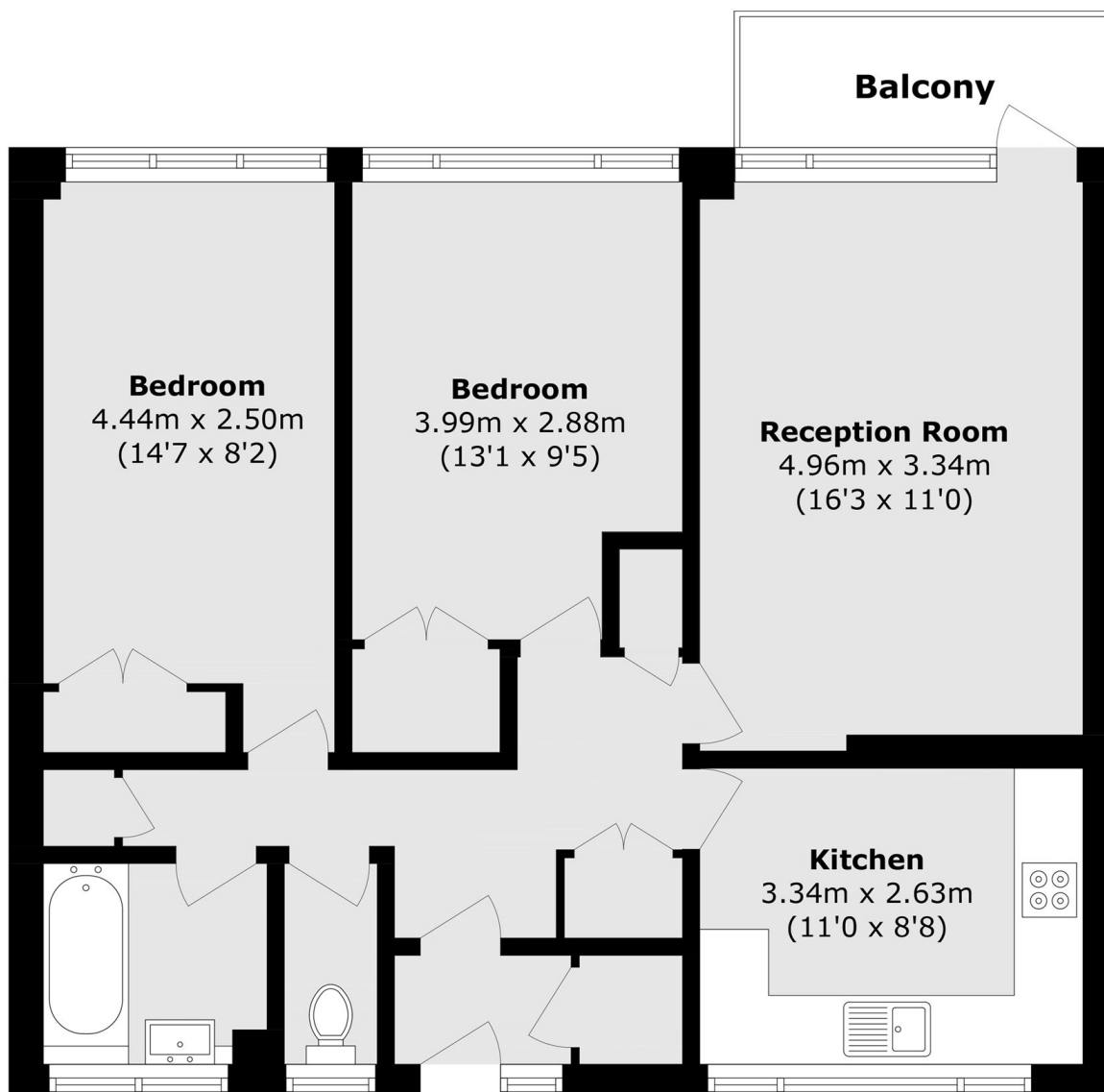
Offered to the market with no onward chain, this well presented two double bedroom first floor flat offers bright and spacious accommodation throughout, together with a private balcony. The property comprises a generous reception room with ample space for both living and dining, a large separate kitchen with a range of fitted units and worktop space, two well proportioned double bedrooms and a family bathroom with a separate WC. The private balcony provides an excellent outside space and enjoys a pleasant outlook, ideal for relaxing or entertaining.

Kidbrooke Park Close is ideally positioned close to the Blackheath Royal Standard, offering a range of cafés, shops and amenities. Both Blackheath Village and Greenwich Park are within easy reach, while nearby Westcombe Park and Blackheath stations provide quick and convenient links into London Bridge and Cannon Street.

Features

- Two Bedrooms
- Chain Free
- Private Balcony
- Good Condition Throughout
- On Street Parking
- Close To Local Transport

Kidbrooke Park Close, London, SE3



Total area (approx.): 69.6 sq. m (749.1 sq. ft)

Balcony total (approx.): 3.9 sq. m (41.9 sq. ft)