



Taunton Avenue, TW3

£579,000

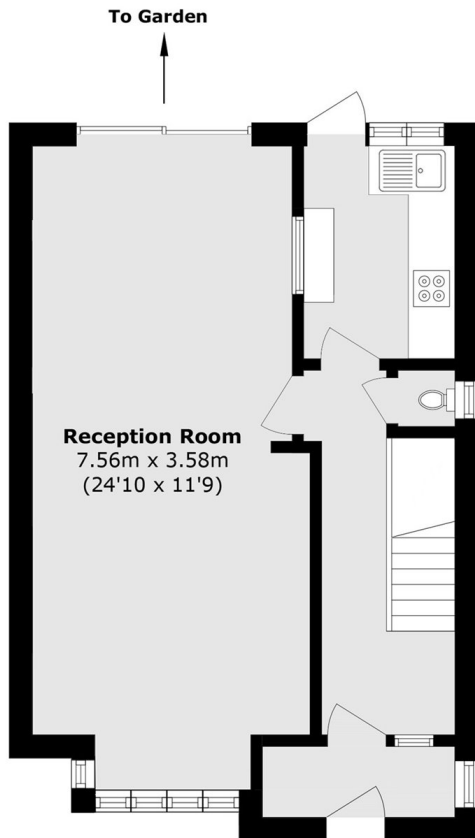
A Beautifully presented, three bedroom semi detached family home. Refurbished and updated to a high standard, the property benefits from off street parking, side access and a porch for storage. There is further potential to extend STPP.

This property located a short walk from Hounslow East Station, local amenities including Hounslow High Street and Lampton Park.

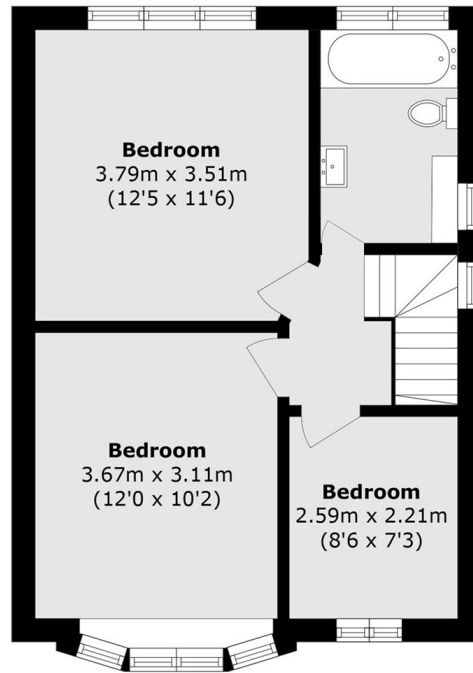
Features

- Newly Refurbished
- Large Garden
- Driveway Parking
- Semi Detached
- Close to Station
- Porch

Taunton Avenue, Hounslow, TW3



Ground Floor



First Floor

Total area (approx.): 86.8 sq. m (934.3 sq. ft)