



Darent Place, Didcot, Oxfordshire. OX11 7UQ

 **Hodsons**
...your move, our passion
Sales | Lettings



Darent Place, Didcot

A well-positioned two-bedroom mid-terrace property, situated on Darent Place within the popular Ladygrove development in Didcot. The property benefits from a useful entrance porch, providing an ideal space for coats and shoes, which in turn leads into a welcoming entrance hall with useful cloakroom. The kitchen is fitted with a range of units offering ample storage, along with space for white goods. To the rear, the comfortable lounge features patio doors opening directly onto the garden, allowing for plenty of natural light and creating an excellent indoor-outdoor flow.

To the first floor, there are two well-proportioned double bedrooms, with the principal bedroom benefiting from fitted wardrobes. A family bathroom, complete with a shower over the bath, serves both bedrooms.

Externally, the rear garden is predominantly laid to lawn with mature apple and pear trees and includes a patio area, making it an ideal space for outdoor entertaining and relaxation. The property benefits from a garage and driveway parking for one car and gated side access.

The Ladygrove development in Didcot is one of the town's most sought-after residential areas, known for its welcoming atmosphere, generous green spaces, and excellent local amenities. Designed with modern living in mind, Ladygrove offers a blend of contemporary homes, quiet residential streets, and beautifully maintained parks, making it ideal for families, professionals, and commuters alike.



- Being sold chain free
- Two bedroom terraced house situated on Darent Place, Didcot
- Useful porch leading into the entrance hall with cloakroom
- Kitchen has ample storage and space for white goods
- Comfortable lounge with door leading into the garden
- Two double bedrooms with the main bedroom having fitted wardrobes
- Bathroom with shower over the bath
- Garden has a patio area and is mainly laid to lawn
- Garage and driveway parking for one car

2		bedrooms
1		receptions
1		bathrooms

Council Tax Band: C

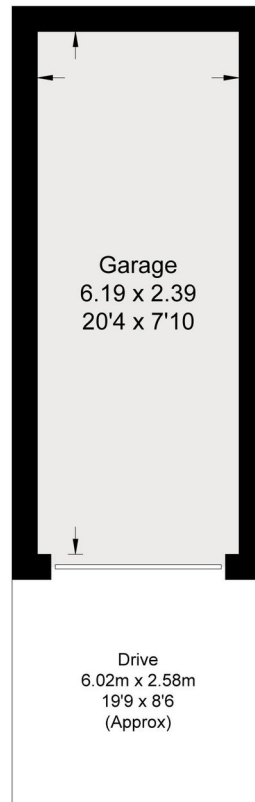
Tenure: Freehold

EPC Rating: D

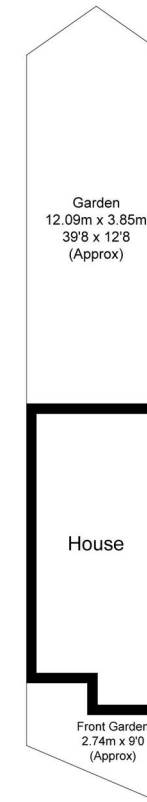
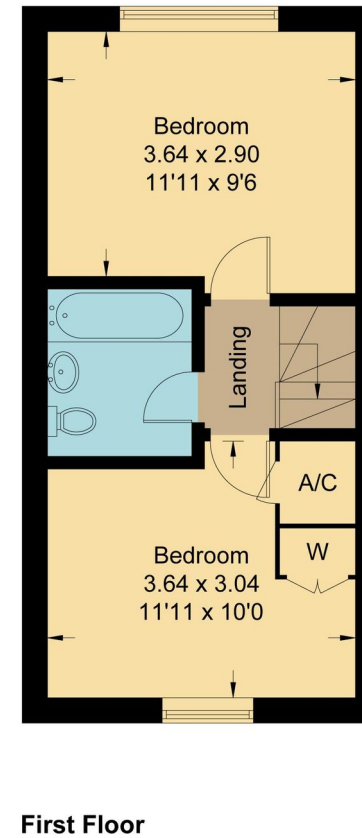
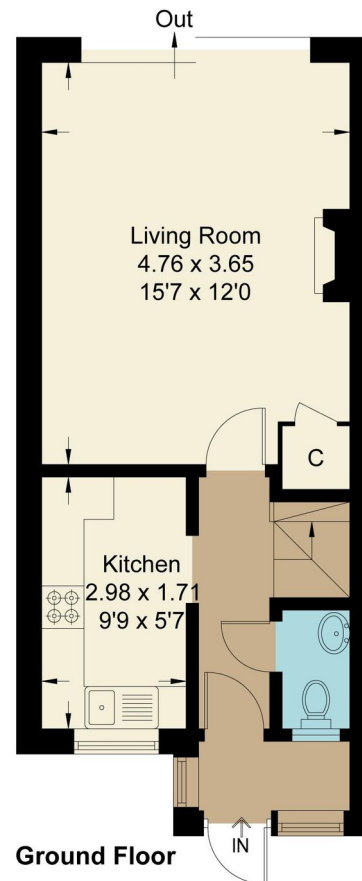


Darent Place, OX11

Approximate Gross Internal Area = 59.30 sq m / 638 sq ft
Garage = 14.80 sq m / 159 sq ft
Total = 74.10 sq m / 797 sq ft
For identification only - Not to scale



(Not Shown In Actual
Location / Orientation)



Not to scale, for illustration and layout purposes only.
© Mortimer Photography. Produced for Hodsons.
Unauthorised reproduction prohibited

220 Broadway, Didcot, Oxon,
OX11 8RS

T: 01235 511406
E: didcot@hodsons.co.uk

www.hodsons.co.uk

 **Hodsons**
...your move, our passion
Sales | Lettings