



92 Caledonian Road | | London | NI 9DN

£3,250 Per month

**ESON2**  
REAL ESTATE

## Key features

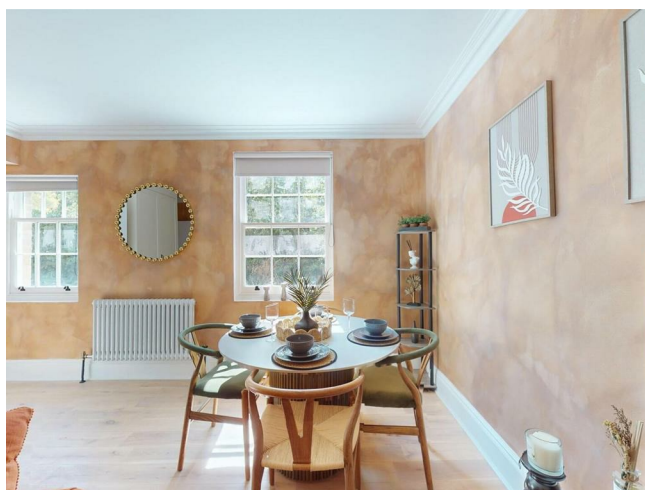
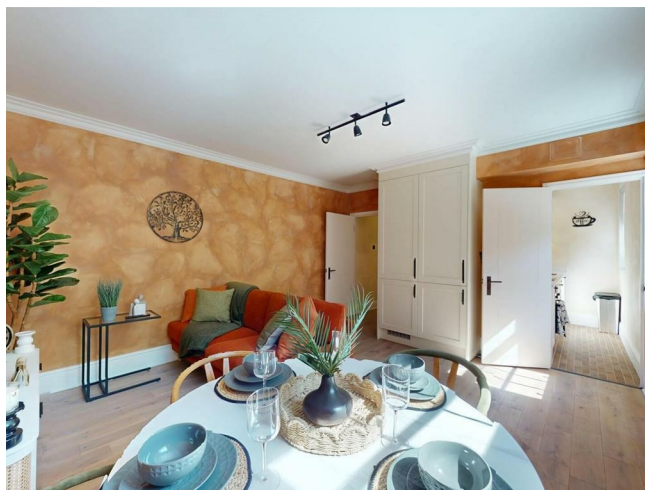
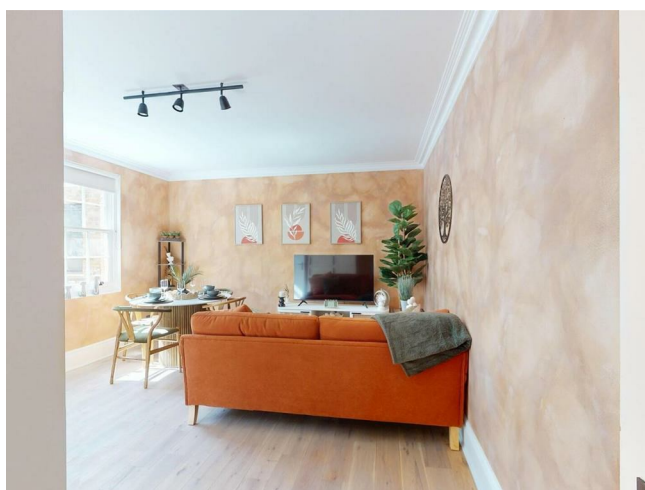
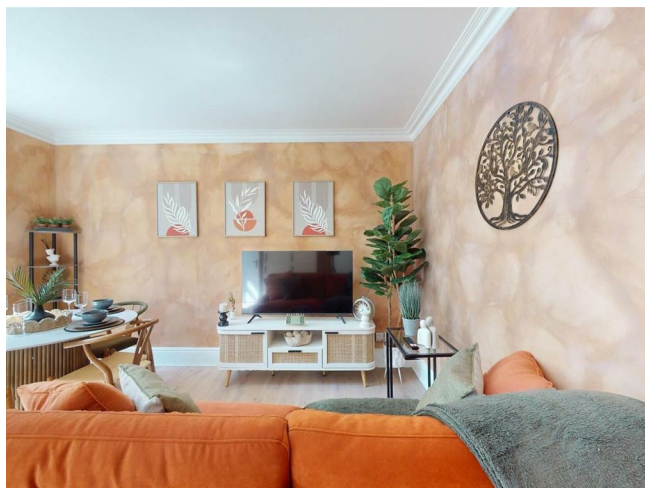
- Two bedroom flat
- Designer bathroom fittings
- Modern flat design
- Warm terracotta interiors
- Well-equipped galley kitchen
- Heart of vibrant Islington

## Description

A beautifully styled 1-bedroom apartment in the heart of Islington, NI. Featuring warm terracotta living spaces, a designer bathroom with brushed gold fittings, and a well-equipped galley kitchen.

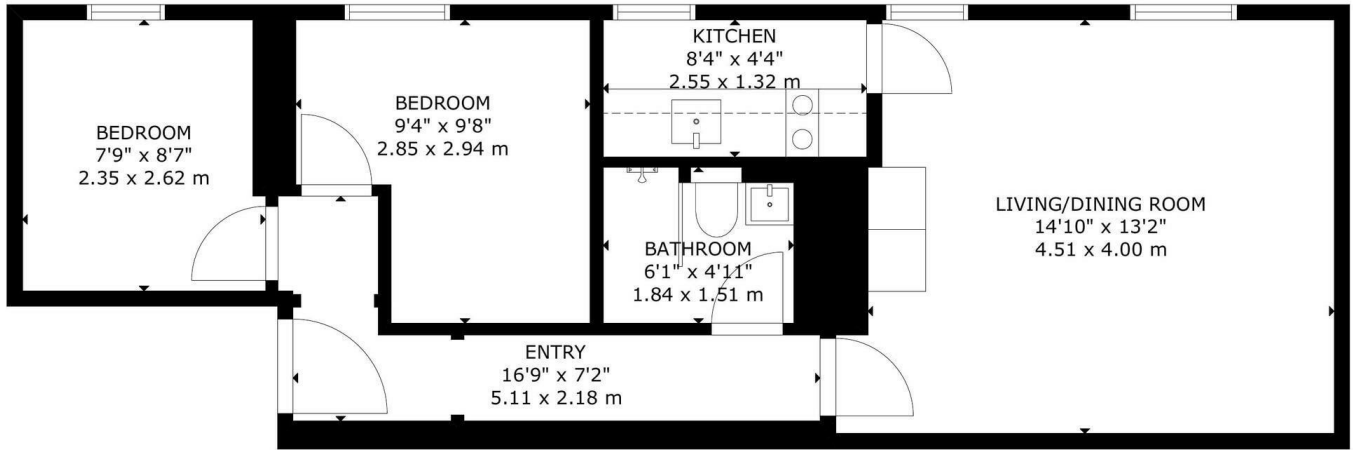
The double bedroom is calm and light-filled with a upholstered headboard, complemented by a second room perfect for guests or shares.

## Directions



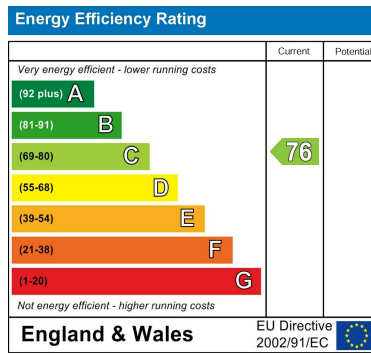


# Floor plans



FIRST FLOOR

GROSS INTERNAL AREA  
 TOTAL: 47 m<sup>2</sup>/501 sq ft  
 FIRST FLOOR: 47 m<sup>2</sup>/501 sq ft  
 SIZE AND DIMENSIONS ARE APPROXIMATE, ACTUAL MAY VARY



Council Tax Band D    EPC Rating C



301 Michelin House 81 Fulham road  
 London  
 Greater London  
 SW3 6RD  
 07920 257649  
 fayeel@eson2.co.uk  
 www.eson2.co.uk