



BRITISH  
PROPERTY  
AWARDS

2025



GOLD WINNER

ESTATE AGENT  
IN DEREHAM



**homeworks**  
estate agent



Norfolk  
Trusted Trader  
Member since  
2021

54 Swaffham Road  
Dereham, NR19 2DL

☎ (01362) 65 44 44  
✉ sales@homeworks-uk.com  
🌐 www.homeworks-uk.com

# Bradenham Road, Shipdham, Thetford, IP25 7PJ

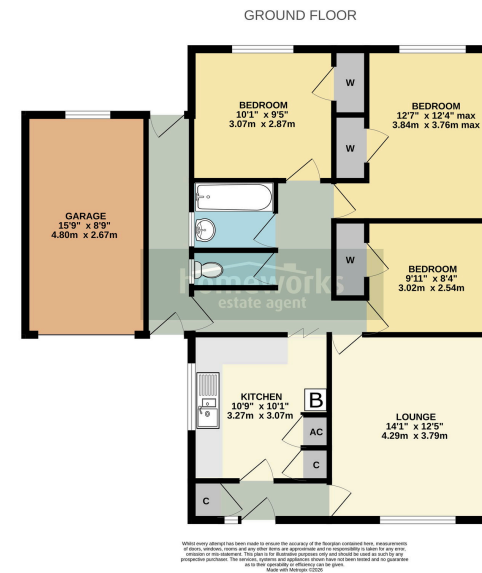
Offers In Region Of £290,000

3 1 2



- **\*\* NO ONWARD CHAIN \*\***
- **DETACHED BUNGALOW IN NEED OF SOME TLC**
- **THREE DOUBLE BEDROOMS**
- **14'1 LOUNGE**
- **12'7 MASTER BEDROOM WITH WARDROBE**
- **FAMILY BATHROOM WITH SEPERATE W/C**
- **AMPLE OFF ROAD PARKING & 15'9 GARAGE**
- **ENCLOSED REAR GARDEN WITH FIELD VIEWS**
- **FANTASTIC VILLAGE LOCATION**
- **\*\* CALL TODAY TO ARRANGE YOUR VIEWING \*\***





We have every effort been made to ensure the accuracy of the floorplan contained here. Measurements of rooms, however, should be taken from an independent and professional surveyor for the area. Measurements are for guidance only. The services, systems and appliances shown have not been tested and no guarantee is given for their operation. © 2024 homeworks estate agent

**\*\* NO ONWARD CHAIN \*\* | DETACHED BUNGALOW | THREE DOUBLE BEDROOMS | 14'1 LOUNGE | 12'7 MASTER BEDROOM WITH WARDROBE | FAMILY BATHROOM WITH SEPERATE W/C | AMPLE OFF ROAD PARKING & 15'9 GARAGE | ENCLOSED REAR GARDEN WITH FIELD VIEWS | FANTASTIC VILLAGE LOCATION | \*\* CALL TODAY TO ARRANGE YOUR VIEWING \*\***



C AMOS MNAEA Managing Director  
VAT no. 185 328 683

