



## Wakeman Road, NW10

### £550,000

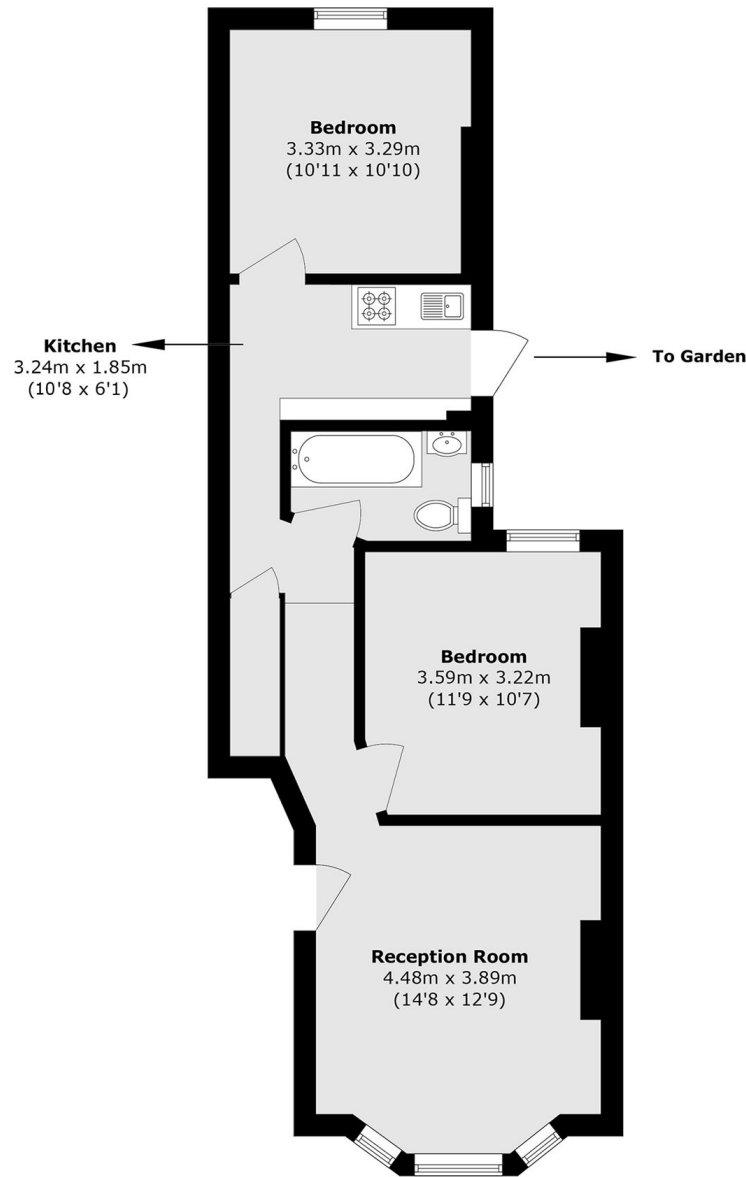
A light and spacious end of terrace two double bedroom Victorian garden flat, with side access from the street and that has recently been renovated throughout. The property has a separate kitchen, high ceilings, has the potential to be extended, and is available chain-free.

Wakeman Road is a quiet tree-lined residential street with access to the cafes, shops, restaurants and bars on Chamberlayne Road, and in close proximity to Queen's Park and Notting Hill. Transport links include Kensal Green (Overground & Bakerloo) and Kensal Rise (Overground), and multiple bus routes.

### Features

- Two Double Bedrooms
- Garden Flat
- South Facing Reception
- Separate Kitchen
- Side Access
- Chain-Free

# Wakeman Road, London, NW10



Total area (approx.): 57.9 sq. m (623.2 sq. ft)