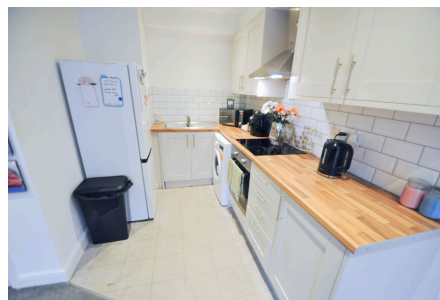


Rowson Mews, Rowson Street, New Brighton

£99,995 Council Tax Band B EPC Rating D

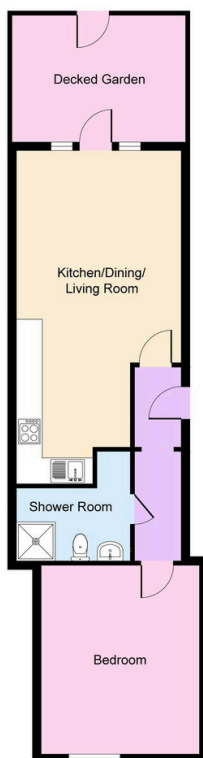
 1  1  1



Sold with no chain, this lovely one bedroom ground floor garden apartment would make a fantastic home for a first time buyer or someone looking to downsize, ready to move into with a modern shower room and kitchen. Situated in a prime area near to the shops and amenities in the heart of New Brighton, as well as those at Marine Point and the up-and-coming Victoria Quarter. Also just a short stroll to the promenade, Vale Park, and well placed for local schooling, frequent bus stops and New Brighton train station. Interior: hallway, living room, and kitchen plus bedroom and shower room. Complete with uPVC double glazing and electric heating. Exterior: private rear garden area. Be quick not to miss out on this home!

Key Features

- One Bed Ground Floor Apartment
- Sold With No Chain
- Private Garden
- Council Tax Band B
- EPC Rating D
-
-
-



Copyright V360 Ltd 2025 | www.houseviz.com