

FLETCHERS

ESTATE AGENTS



Southfield Road, W4

£623 Per week

A recently refurbished three bedroom split- level offering a spacious reception room with ample space for dining, separate modern kitchen, three double bedrooms and a family size bathroom. Both sharers and families welcome.



A recently refurbished three bedroom split- level offering a spacious reception room with ample space for dining, separate modern kitchen, three double bedrooms and a family size bathroom. Both sharers and families welcome.

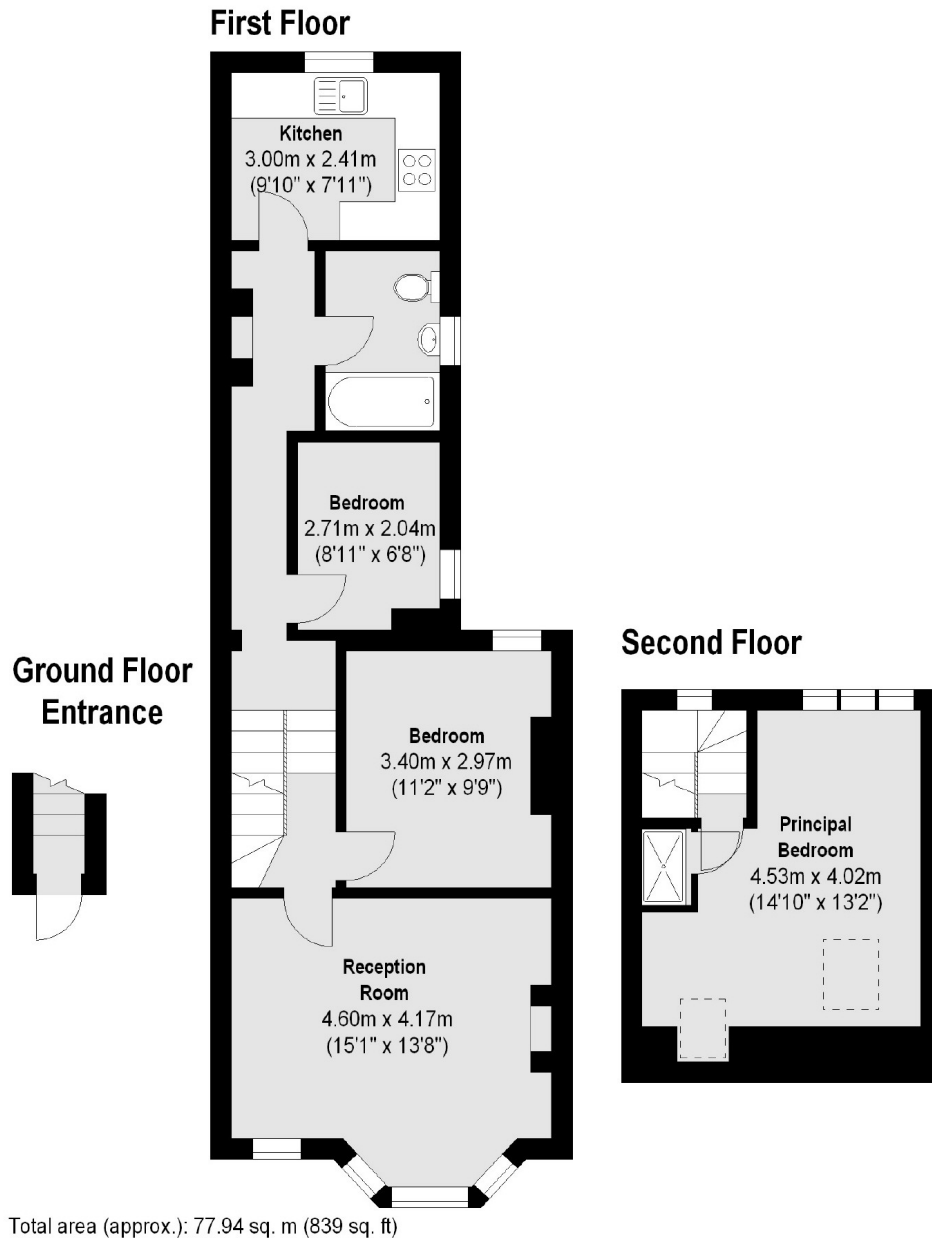
Southfield Road is located on the Bedford Park borders and within walking distance to Turnham Green Underground station.

- Three Bedrooms • Separate Kitchen • Spacious Reception •
- Split Level Property • Victorian Conversion • Bedford Park Location •



FLETCHERS

ESTATE AGENTS



Fletchers Chiswick High Road Lettings
86 Chiswick High Road
Chiswick
London
W4 1SY
020 8742 4100

Energy Rating: D We aim to make our particulars both accurate and reliable. However they are not guaranteed; nor do they form part of an offer or contract. If you require clarification on any points then please contact us, especially if you're traveling some distance to view. Please note that appliances and heating systems have not been tested and therefore no warranties can be given as to their good working order