



CEDAR ROAD, NW2

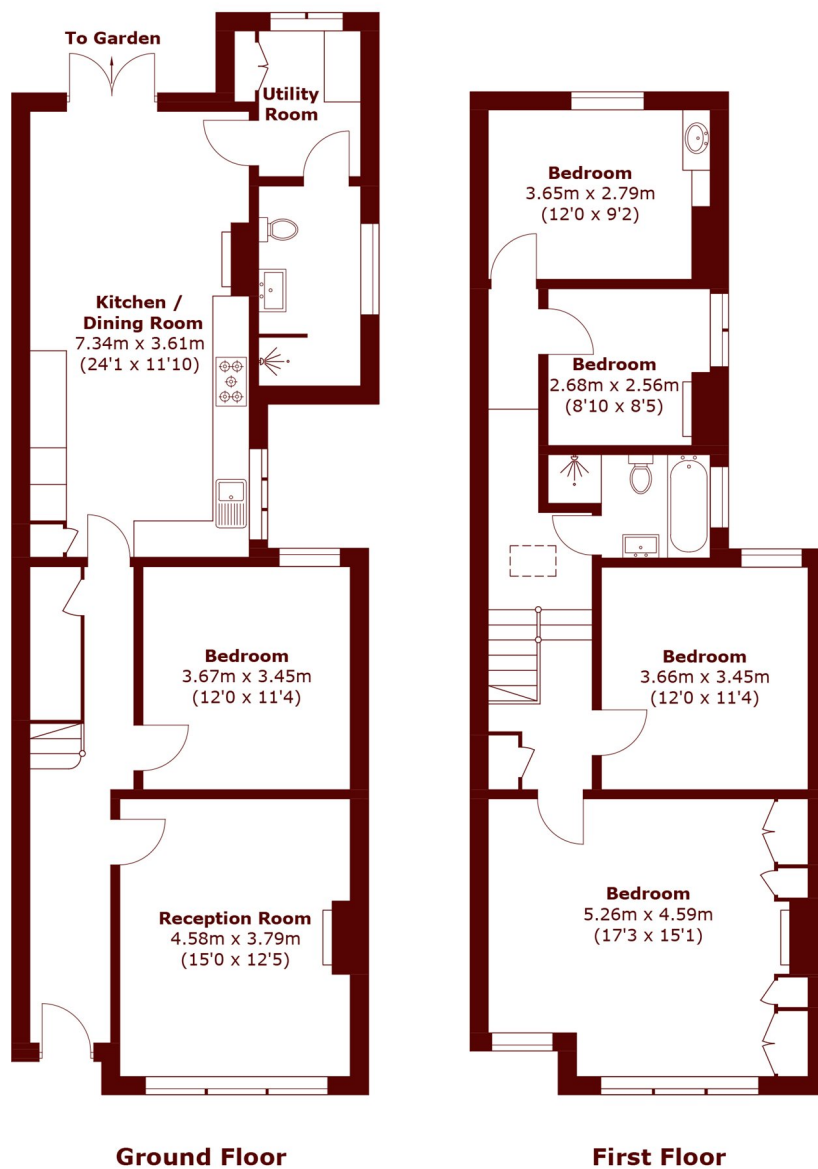
£1,100,000

A stunning Edwardian semi-detached house situated on a beautiful residential road East of Gladstone Park. The property offers generous living space and sunny garden will attract all buyers.

Large Garden
Edwardian
Four Bedrooms

Original Fireplaces
Semi-Detached
Study

STEP INSIDE CEDAR ROAD



Total area (approx.): 152.3 sq. m (1,639.3 sq. ft)

Willesden Green
020 8451 0420

Energy Rating: We aim to make our particulars both accurate and reliable. However, they are not guaranteed; nor do they form part of an offer or contract. If you require clarification on any points then please contact us, especially if you're traveling some distance to view. Please note that appliances and heating systems have not been tested and therefore no warranties can be given as to their good working order

MARSH &
PARSONS