

SNELLERS

ESTATE AGENTS



Candler Mews, TW1

£950,000

This split level top floor apartment is nestled within the sought-after enclave of Candler Mews on Amyand Park Road, this outstanding apartment forms part of an exclusive office-to-residential conversion.



Offering over 1,400 sq ft of beautifully designed living space, this three-bedroom, two-bathroom apartment has been crafted to an incredibly high specification throughout. From premium fixtures and fittings to thoughtful design and layout, every detail has been considered for modern comfort and style.

Set on the top floor, this property boasts impressive views, ideal for quiet relaxation. Additional features include private parking with electric vehicle charging point and an open-plan living space that seamlessly blends luxury and practicality. Further benefits include a video entry system, 10 year warranty, Virgin Media broadband Wi-Fi service, a brand new 999-year lease, no ground rent and a share of the freehold.

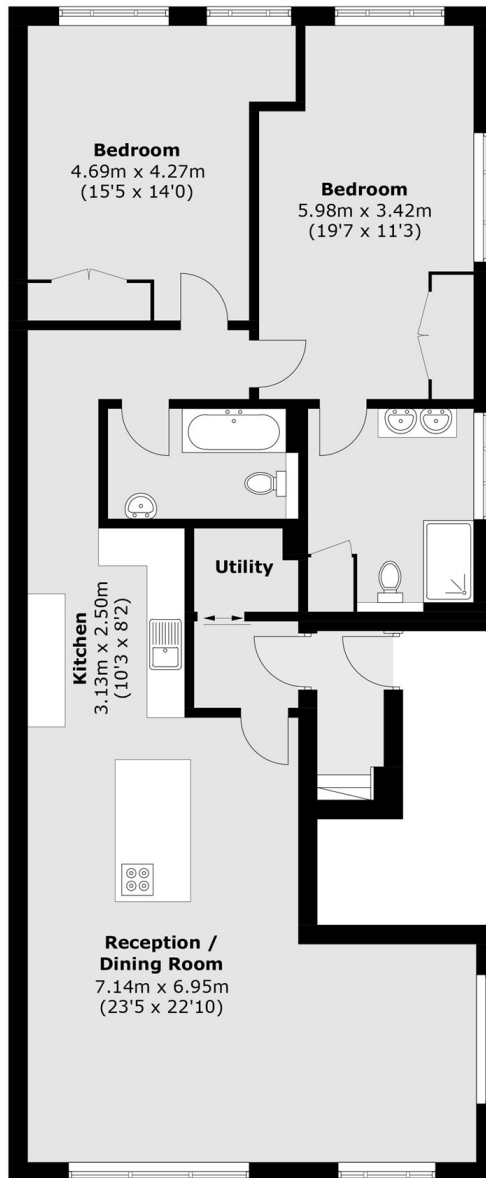
Perfectly positioned in the heart of Twickenham, you will be moments from the town centre's vibrant shops, restaurants, and riverside walks, with Twickenham Station just a short stroll away for fast links into London Waterloo. Marble Hill Park is also nearby and renowned for its annual Summer concerts and is within the catchment area for Orleans School. A unique high-end home in one of Twickenham's most desirable and discreet locations.

- Three Bedrooms • Two Bathrooms • Brand New Conversion •
- Share Of Freehold • Split Level Luxury Apartment • No Onward Chain •

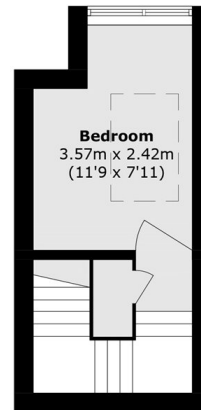


SNELLERS

ESTATE AGENTS



Second Floor



Third Floor

Total area (approx.): 130.4 sq. m 1,403.6 sq. ft)

Snellers Twickenham Sales
64-66 Heath Road
Twickenham
TW1 4BX
020 8892 5555
twickenhamsales@snellers.co.uk

Energy Rating: TBC We aim to make our particulars both accurate and reliable. However they are not guaranteed; nor do they form part of an offer or contract. If you require clarification on any points then please contact us, especially if you're traveling some distance to view. Please note that appliances and heating systems have not been tested and therefore no warranties can be given as to their good working order