



Jasmine Cottage, 1 High Street, Stoney Middleton, Hope Valley, S32 4TL

Saxton Mee

1 High Street Stoney Middleton

Asking Price

£395,000

Charming Georgian Cottage in the Peak District village of Stoney Middleton. This beautifully presented detached stone cottage offers a perfect blend of character, flexibility and modern living.

Set over three floors, this versatile property - ideal as a full-time residence, weekend retreat, or second home - offers a welcoming living space filled with natural light, with delightful views across the village towards Eyam Edge.

The layout flows effortlessly, with adaptable rooms that can be tailored to suit a variety of lifestyles. A delightful triple aspect sitting room with log burning stove connects to a fitted kitchen and on to a utility room and further flexible reception below. Upstairs, two well-proportioned double bedrooms offer comfortable and characterful accommodation, complemented by a shower room.

Outside, the property continues to impress. The low-maintenance garden with patio seating and established planting, provides an ideal space to relax or entertain. A standout feature is the separate home office, fully equipped with electricity and broadband. Perfect for remote working, creative use, or as a peaceful studio space.

Stoney Middleton lies at the boundary between The Dark Peak and The White Peak, making it perfectly positioned for easy access to the moors and escarpments that run from Hathersage to Baslow; the parklands of Chatsworth; the quarries and dales towards Eyam; the more pastoral landscapes of Litton and Tideswell; and the River Derwent running along the bottom of the valley.

The 257 and 65 bus services run regularly to the Derbyshire towns of Bakewell, and Buxton and over the moors to the nearby city of Sheffield.

The village itself (pictures included) is built on a series of small lanes, that traverse the slopes of four different hills and project along the bottom of the valley towards the river, offering over twenty different walking routes under 3 miles direct from the door.



- Desirable Peak District Village Location
- Flexible Living Spaces To Suit Modern Lifestyles
- Dedicated Home Office
- Easily Managed Garden
- Well Presented Throughout
- Direct Access To A Wealth Of Outdoor Pursuits
- Easy Commutable Distance Of Major Commercial Centres
- Close To Amenities
- EPC: E
- Viewings: Hathersage Office

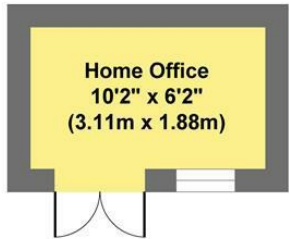




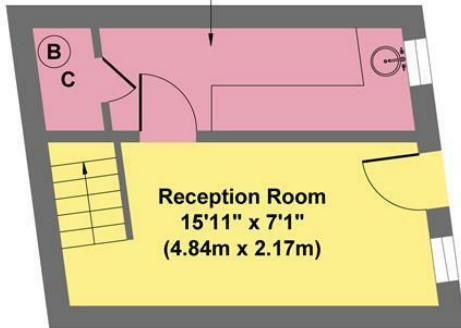
Jasmine Cottage

Breakfast Kitchen
15'11" x 7'3"
(4.54m x 2.20m)

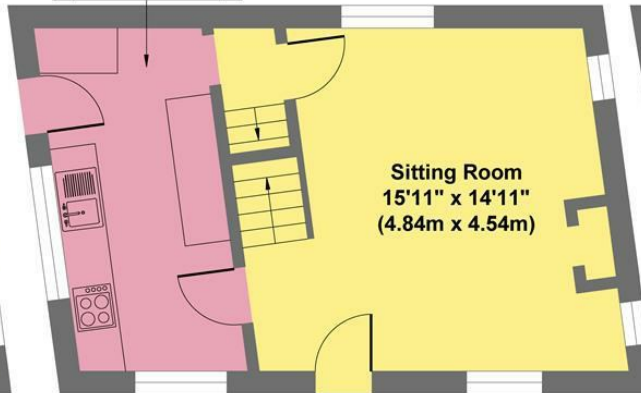
Utility Room
13'4" x 4'6"
(4.07m x 1.36m)



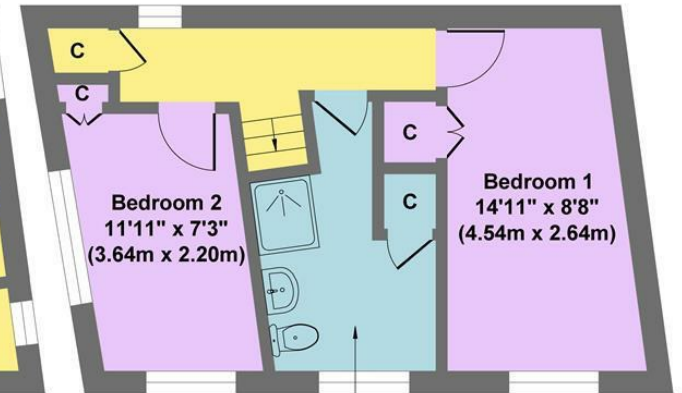
Outbuilding
Approximate Floor Area
63 sq.ft
(5.84 sq.m.)



Lower Ground Floor
Approximate Floor Area
193 sq.ft
(17.97 sq.m.)



Upper Ground Floor
Approximate Floor Area
354 sq.ft
(32.93 sq.m.)



Shower Room
12'6" x 8'2"
(3.80m x 2.50m)

First Floor
Approximate Floor Area
354 sq.ft
(32.89 sq.m.)

Approx. Gross Internal Floor Area 964 sq.ft / 89.63 sq.m

Illustration for identification purposes only. Measurements are approximate, not to scale

While we endeavour to make our sales particulars fair, accurate and reliable, they are only a general guide to the property and, accordingly, if there is any point, which is of particular importance to you, please contact the relevant office. The Agents have not tested any apparatus, equipment, fittings or services and so cannot verify they are in working order. The buyer is advised to obtain verification. Please note all the measurement details are approximate and should not be relied upon as exact. All plans, floor plans and maps are for guidance purposes only and are not to scale. Under no circumstances should they be relied upon as exact or for use in planning carpets and other such fixtures, fittings or furnishings. YOUR HOME IS AT RISK IF YOU DO NOT KEEP UP REPAYMENTS ON A MORTGAGE OR OTHER LOAN SECURED ON IT. 'A Life Assurance policy may be requested.' 'Written Quotations of credit terms available on request.'

Banner Cross
T: 0114 268 3241
E: bannercross@saxtonmee.co.uk
www.saxtonmee.co.uk

Hathersage
T: 01433 650009
E: hathersage@saxtonmee.co.uk

Bakewell
T: 01629 815307
E: bakewell@saxtonmee.co.uk

Matlock
T: 01629 828250
E: matlock@saxtonmee.co.uk

