



## Kings Gardens, NW6

£715,000

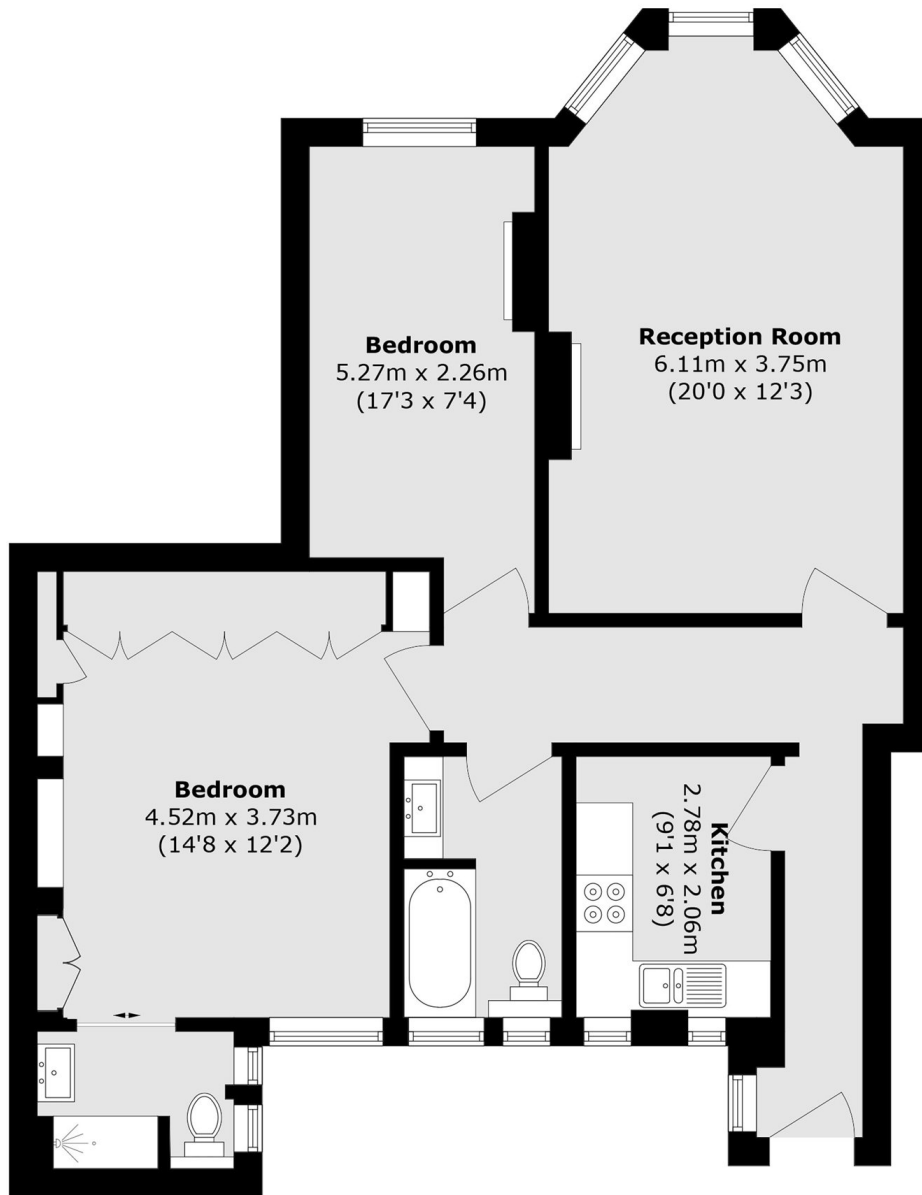
This two double bedroom apartment is set on the first floor within this elegant mansion block. The property features two bathrooms, spacious rooms, and will be sold with no onward chain.

Kings Gardens is positioned within walking distance of the amenities and transport links on West End Lane and Kilburn High Road. Shops, restaurants and cafés are in abundance.

### Features

- Two Bedrooms
- Two Bathrooms
- Separate Kitchen
- Porter
- First Floor
- Long Lease

# Kings Gardens, London, NW6



Total area (approx.): 77.4 sq. m (833.1 sq. ft)