



Price
£425,000

Freehold

2x  1x  1x 

**Kemming Road,
Whitwell, Isle of Wight,
PO38**

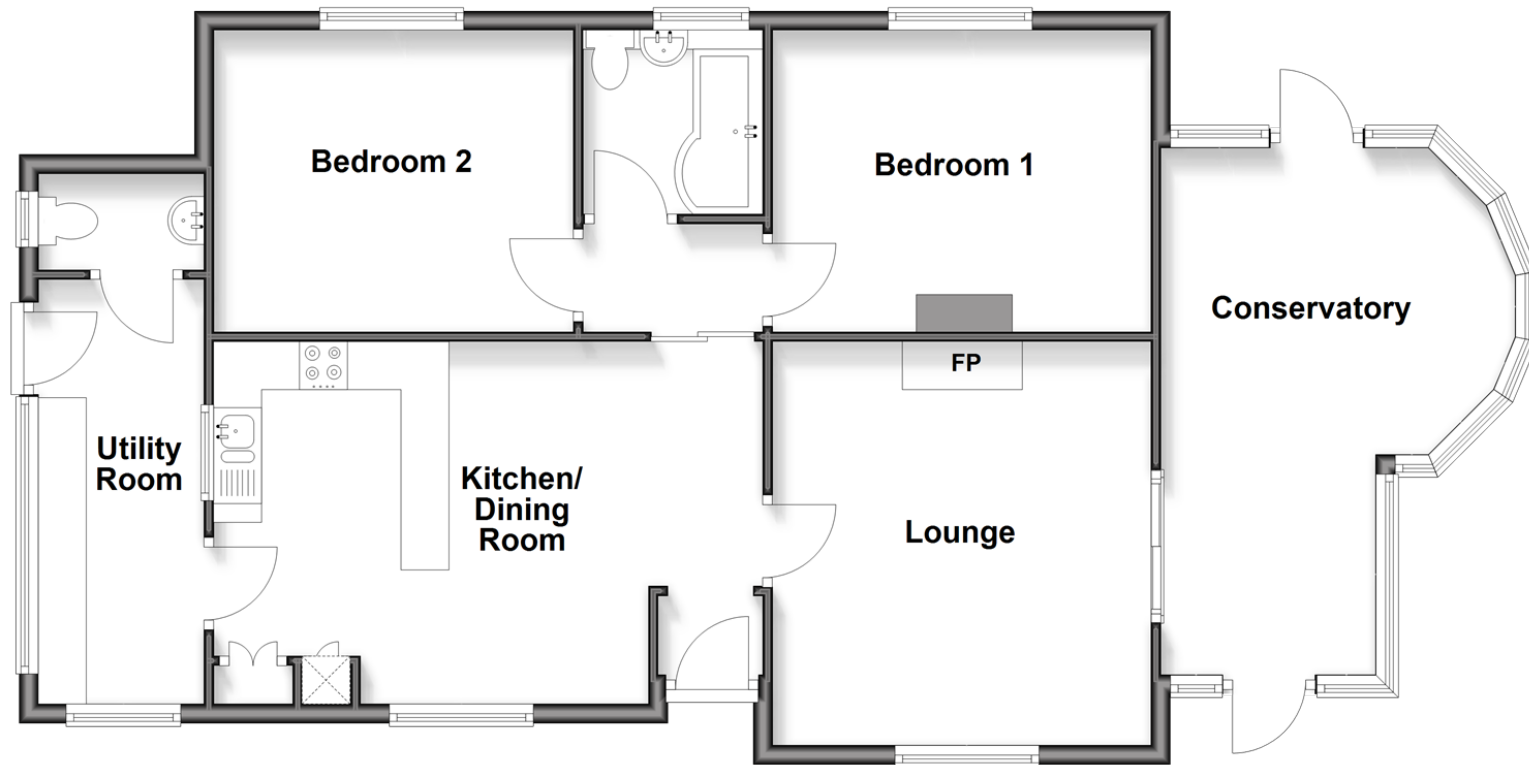
OVER 60?

Secure this property
for up to **59% less!**

Pittis 
Helping you move forwards

Ground Floor

Approx. 96.7 sq. metres (1040.4 sq. feet)



Accommodation

GROUND FLOOR

Entrance Hallway

Lounge: 13'9 x 13'0 (4.19m x 3.97m)

Dining Room: 12'5 x 6'9 (3.79m x 2.06m)

Kitchen: 12'4 x 8'0 (3.76m x 2.44m)

Utility Room: 14'11 x 6'1 (4.55m x 1.86m)

Conservatory: (L-shaped) 12'9 x 11'3 (3.89m x 3.43m) plus 7'8 x 7'5 (2.34m x 2.26m)

Bedroom 1: 12'11 x 10'4 (3.94m x 3.15m)

Bedroom 2: 12'3 x 10'8 (3.74m x 3.25m)

Bathroom

OUTSIDE

Front & Rear Gardens

Double Garage

Driveway



Main features

- Much sought after village location
- Excellent opportunity to modernise and refurbish throughout
- Easy access to surrounding countryside walks
- Off road parking for multiple cars and double garage
- Stunning conservatory with under floor heating providing all year round comfort



Nearest Schools

Niton Primary School
Godshill County Primary School
The Island Free School - Ventnor
The Bay CE School - Sandown
Medina College - Newport



Transport Information

Local buses providing Island wide connections plus local train station with direct links to Ryde Pier Head.



Address

Kemming Road, Whitwell, Isle of Wight, PO38



Directions

For directions to this property please contact us.



Pittis
Helping you move forwards

Call Ventnor Branch 01983 856417 ■ pittis.co.uk



■ Through a Homewise Home For Life Plan people aged 60+ can secure this property for up to 59% less, by purchasing a Lifetime Lease

60802389/20260327/DW/CP