

Sinclair Gardens, W14

£350,000

A beautiful one bedroom apartment in the heart of Brook Green. This property has a lovely living space with bay window and high ceilings, mezzanine bedroom, modern bathroom and storage cupboard. This would make the ideal home for a first time buyer or a buy to let investment.

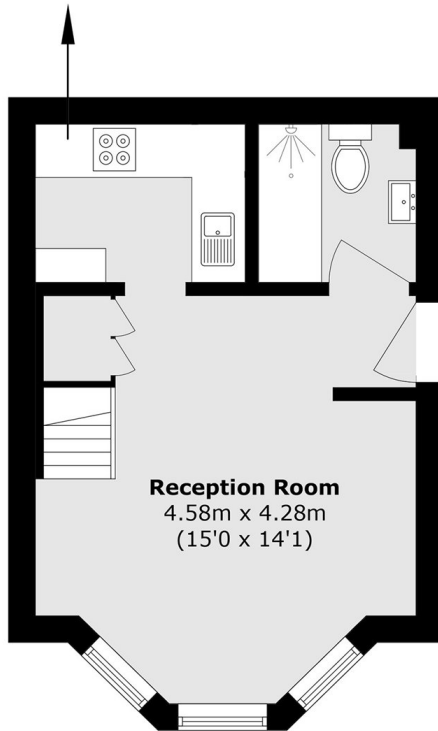
The property is located close to Brook Green, and the amenities of Westfield shopping centre, the Television Centre and Soho House within easy reach. The closest stations are to be found at Shepherds Bush - Central line and Overground; Kensington Olympia; and Goldhawk Road.

Features

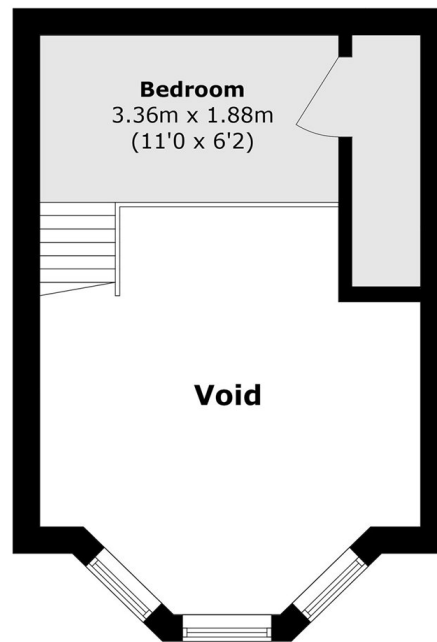
- One Bedroom
- Mezzanine Level
- Victorian Conversion
- Long Lease
- Brook Green
- Kensington Olympia

Sinclair Gardens, London, W14

Kitchen
2.35m x 1.73m
(7'9" x 5'8")



Ground Floor



Mezzanine

Total area (approx.): 36.05 sq. m (388.0 sq. ft)

(Including Mezzanine / Excluding Void)