

FLETCHERS

ESTATE AGENTS



Mayfield Road, W12

£200,000

A purpose built first floor studio apartment offering spacious living space and plenty of storage. The property also benefits from an allocated residents parking space as well as well maintained communal gardens. The property is in one of the best locations in Shepherds Bush being close to transport as well as green spaces like Ravenscourt Park. This is being offered chain free and in move in ready condition. The apartment is also a great opportunity for investors looking for a high yield rental return.

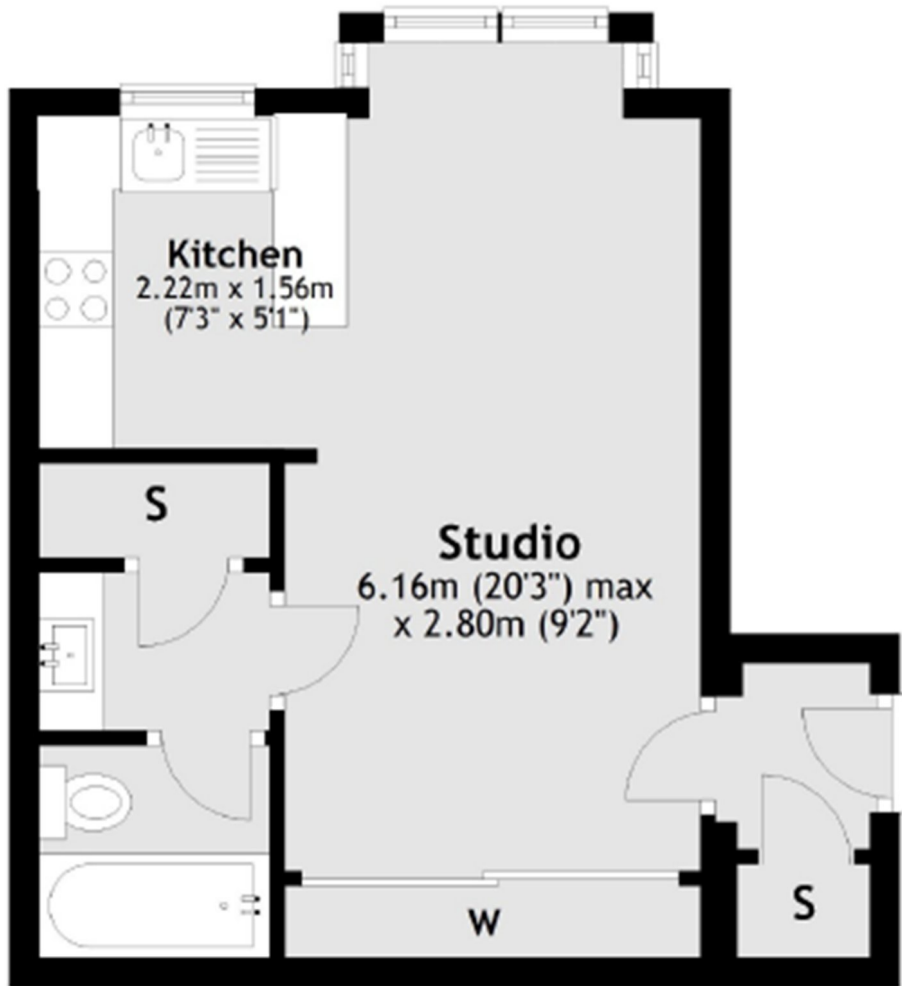
Located under half a mile away from Stamford Brook and Turnham Green Station. Bus routes are also available into central from Goldhawk Road or The Vale.

- Studio Flat • Spacious Living Area • Chain Free • Off Street Parking • Close to Transport • High Rental Yield •

FLETCHERS

ESTATE AGENTS

First Floor



Total area: approx. 28.3 sq. metres (305.0 sq. feet)

Fletchers Chiswick Turnham Green Sales
58 Turnham Green Terrace, London, W4 1QP
020 8987 3000
chiswicksales@fletcherestates.com

Energy Rating: C. We aim to make our particulars both accurate and reliable. However they are not guaranteed; nor do they form part of an offer or contract. If you require clarification on any points then please contact us, especially if you're traveling some distance to view. Please note that appliances and heating systems have not been tested and therefore no warranties can be given as to their good working order.