



Blackheath Hill, SE10

£300,000

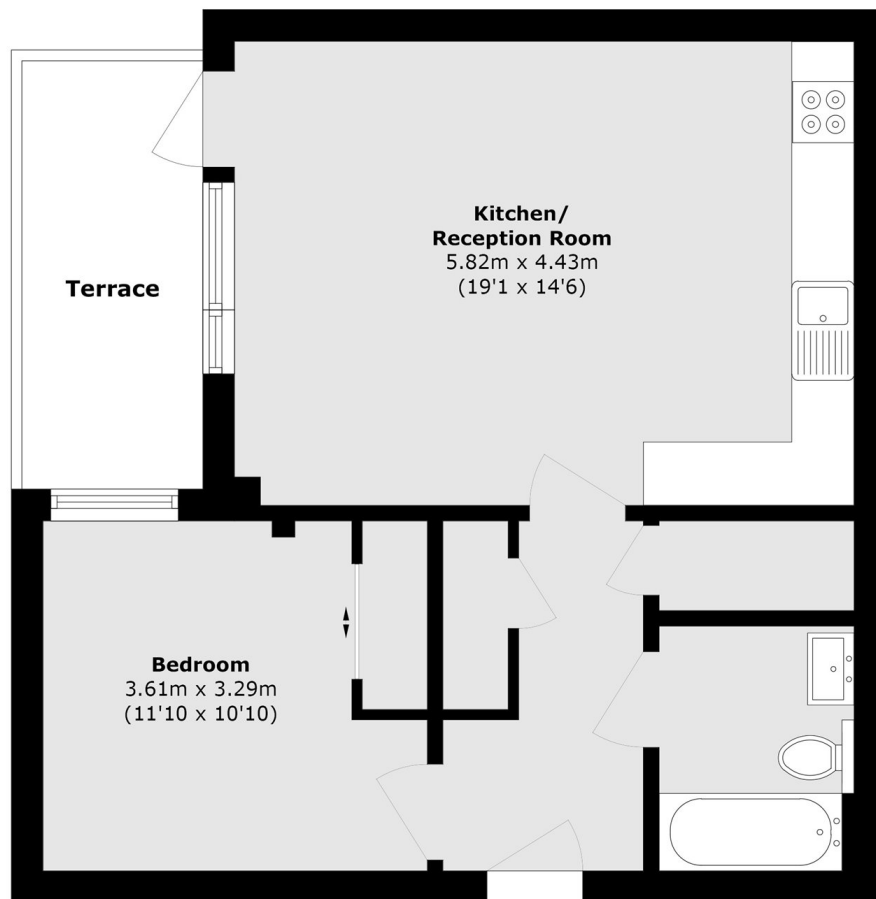
A charming one bedroom flat in a sought-after location. The property features spacious bedroom, a modern finish, open plan kitchen/ reception room area and benefits include a private balcony.

Blackheath Hill offers a quick commute to Canary Wharf, London Bridge, Cannon Street, and Kings Cross via the Greenwich Mainline and DLR Station. Greenwich Park and Greenwich Market are a short walk away and offer a variety of local stores, restaurants, and bars for residents to enjoy.

Features

Sought After Location
Ideal First Purchase
Modern
No Work Required
Private Balcony
Concierge

Blackheath Hill,
London, SE10



Total area (approx.): 51.3 sq. m (552.1 sq. ft)
Terrace area (approx.): 9.58 sq. m (103.1 sq. ft)