



LENDAL TERRACE, SW4

£549,950

Two double bedrooms
Victorian maisonette
Private entrance
Private garden
New double glazing
Energy rating: d

@marshandparsons
marshandparsons.co.uk

MARSH &
PARSONS



ABOUT THE PROPERTY

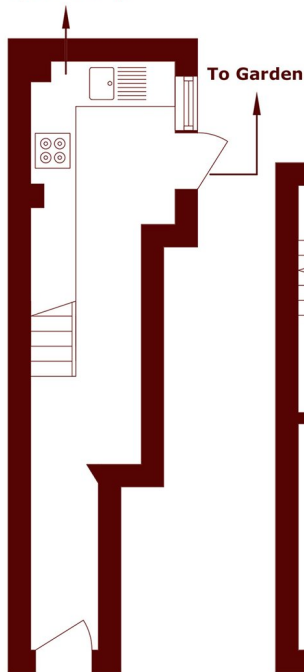
A bright and spacious two double bedroom Victorian maisonette arranged over three floors and benefiting from a private entrance and garden. Low service charge, long lease and chain free.

A well-arranged maisonette set over three floors, offering bright and practical living space throughout. The first floor features a generous reception room, alongside a large bathroom, a separate kitchen on the ground floor with access to the garden, while the second floor provides two well-proportioned double bedrooms and an additional WC. All enhanced by newly installed sash double glazing to all rooms. Ideal for first-time buyers, the property benefits from a logical layout and good natural light.

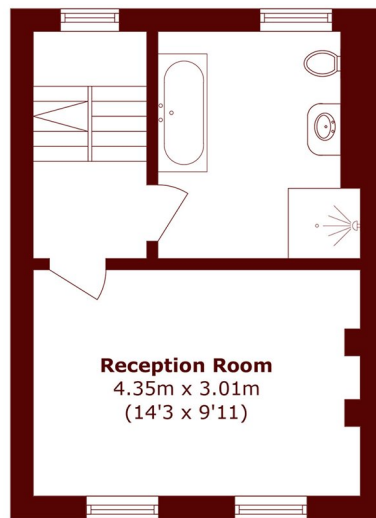


STEP INSIDE LENDAL TERRACE

Kitchen
3.38m x 1.92m
(11'1" x 6'4")

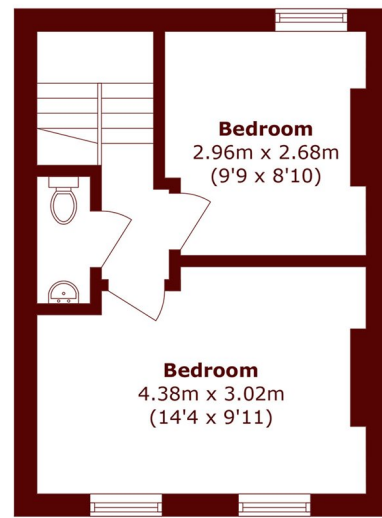


Ground Floor



Reception Room
4.35m x 3.01m
(14'3" x 9'11")

First Floor



Bedroom
2.96m x 2.68m
(9'9" x 8'10")

Bedroom
4.38m x 3.02m
(14'4" x 9'11")

Second Floor

Total area (approx.): 64.8 sq. m (697.5 sq. ft)

Clapham
020 7501 3666

Energy Rating: D We aim to make our particulars both accurate and reliable. However, they are not guaranteed; nor do they form part of an offer or contract. If you require clarification on any points then please contact us, especially if you're traveling some distance to view. Please note that appliances and heating systems have not been tested and therefore no warranties can be given as to their good working order

**MARSH &
PARSONS**