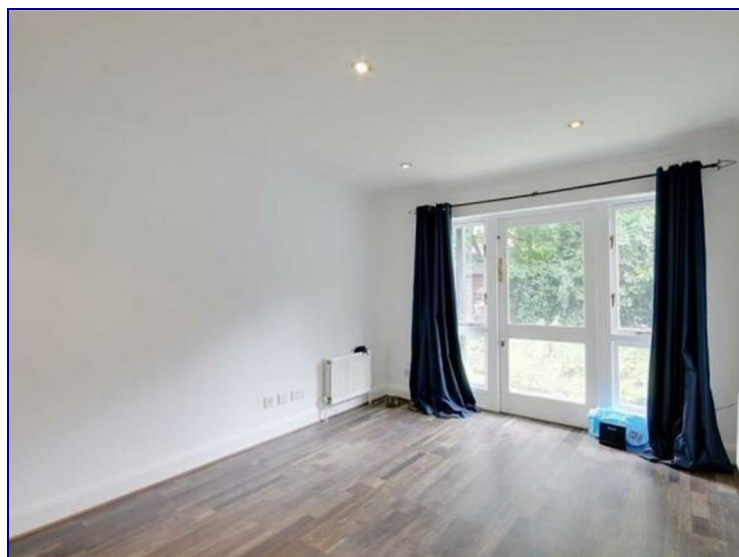
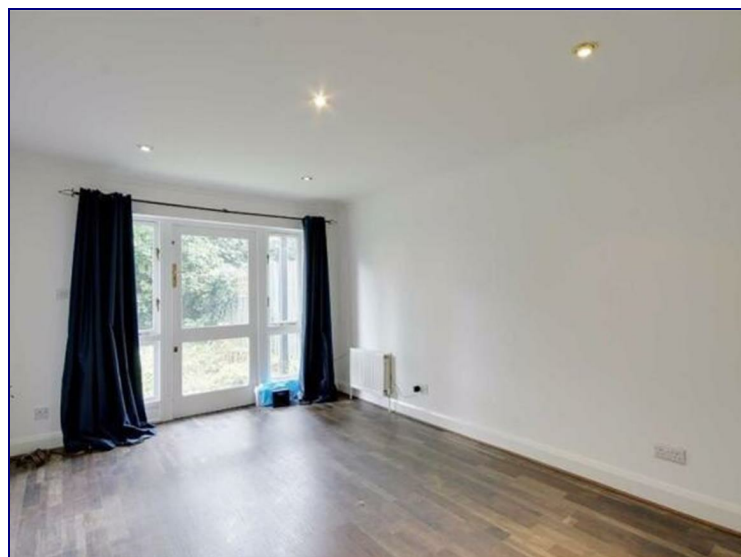


## Hainton Close, London, E1 2QZ



**£1,900 Per Month**

Located on a quiet Cul-De-Sac within the heart of Shadwell and perfectly situated for Shadwell DLR Station, comes this superb two double bedroom ground floor apartment with a wonderful southwest facing corner plot garden. The apartment is well maintained with neutral decor throughout and benefits from two double bedrooms, a spacious eat-In kitchen and a reception room with access to the large corner plot garden, and private residents parking is immediately available to the front of the property. Hainton Close is Ideally located for access to the City and Canary Wharf, being within a short walk to Shadwell DLR, Whitechapel and Aldgate East stations, whilst Brick Lane, Spitalfields and Wapping are all close by serving up the many Bars and restaurants they have on offer.



