



2 Bed
Apartment
located
on Aldbourne
Road, Coventry
£975 PCM



 UP Estates



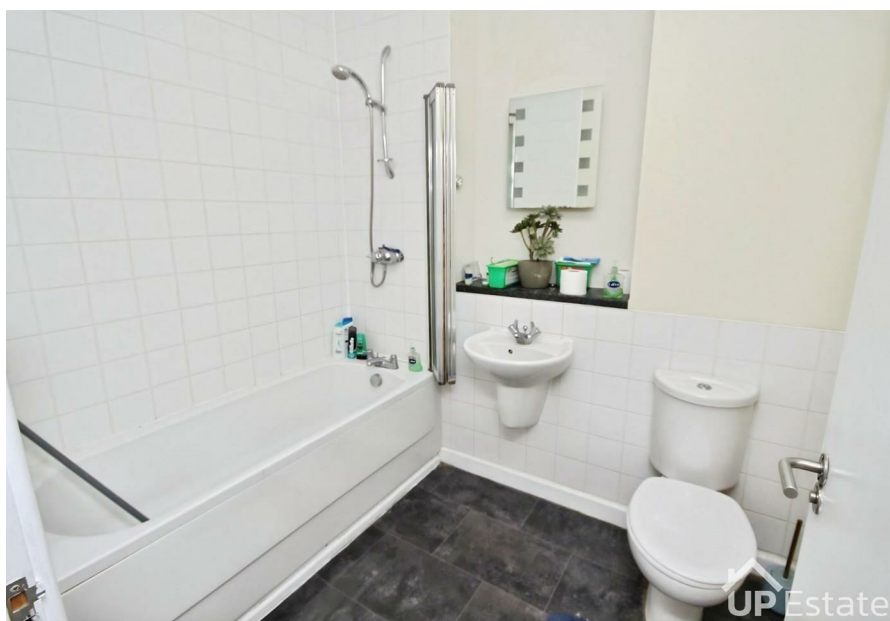
Property Address:
Aldbourne Road,
Coventry,
CV1 4BA

PROPERTY SUMMARY

Available from the end of August, this spacious two-bedroom first-floor apartment is located within a unique and well-designed development in the heart of Coventry City Centre.

Bishopsgate Wharf offers character and convenience, featuring a distinctive louvred frontage, secure gated parking, and attractive canal-side surroundings to the rear. The accommodation comprises an entrance hall, two generous double bedrooms, a fitted kitchen, a bright lounge/diner, and a family bathroom.

Further benefits include lift access and one secure gated parking space. Early viewing is highly recommended – call now to arrange your appointment!



CONTACT

Up Estates
6 Orchard Court
Binley Business Park
Coventry
Warwickshire
CV3 2TQ

E: lettings@upestates.co.uk
T: 024 7771 0780
www.upestates.co.uk