

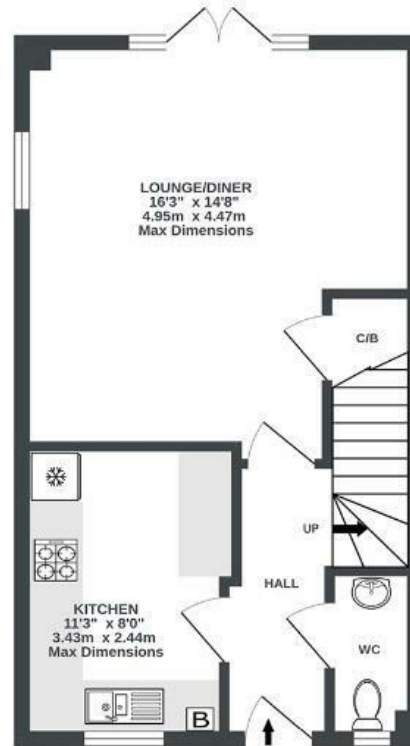
Jenny Lane

SOUTHMEAD

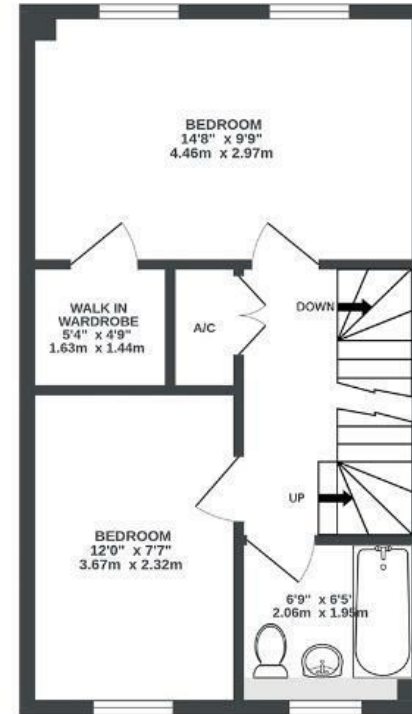
APPROXIMATE FLOOR AREA
98.5 SQM / 1060 SQFT



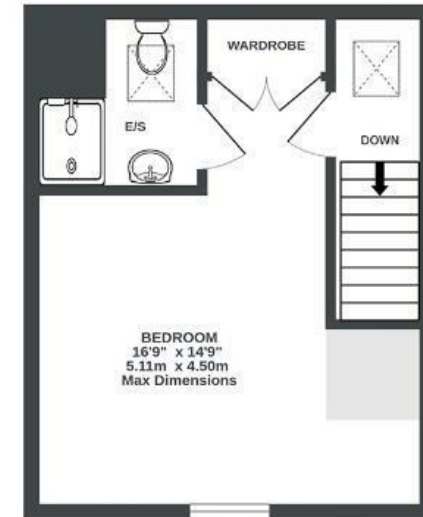
GROUND FLOOR
392 sq.ft. (36.4 sq.m.) approx.



1ST FLOOR
392 sq.ft. (36.4 sq.m.) approx.



2ND FLOOR
277 sq.ft. (25.7 sq.m.) approx.



Boardwalk

Jenny Lane

SOUTHMEAD, BRISTOL



£375,000



3 Bedrooms



BS10 6WH



3 Bathrooms

"I chose this location to be close enough to Bristol social and cultural life, far enough from traffic and congestion. I loved the proximity of the countryside and the accessible green areas within walking distance. I was particularly fond of the green space opposite the house. There is a preservation order meaning nothing can be cut down and is a breath of fresh air when you leave the front door."

