



## Draycott Place, SW3

£1,500,000

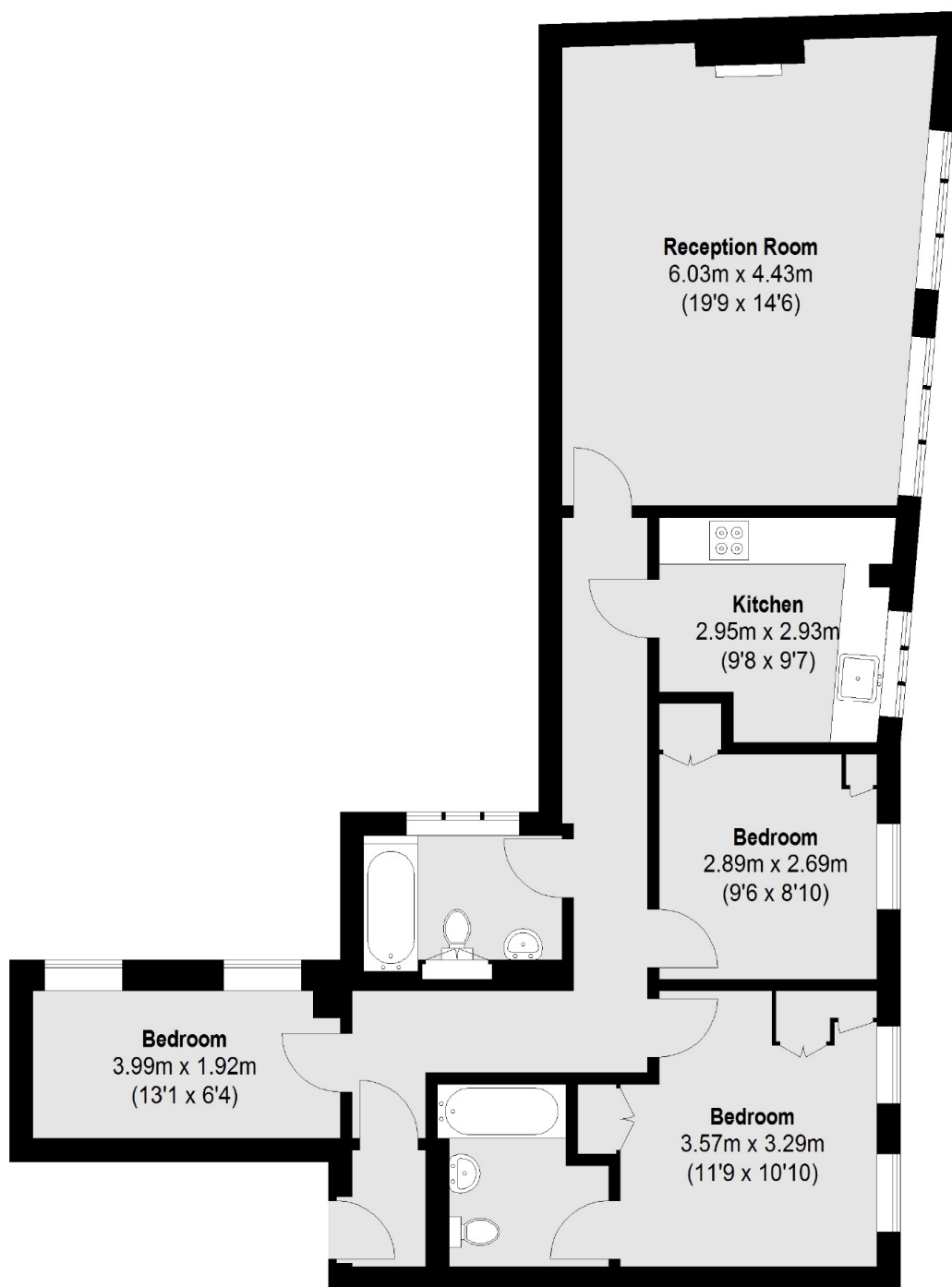
A well presented three bedroom property moments from Sloane Square and Pavilion Road. This apartment is positioned on the third floor (with lift) and benefits from lovely views as well as plenty of natural light.

Rutland Court is positioned on the corner of Blacklands Terrace and Draycott Place which runs parallel to the Kings Road. Sloane Square and Chelsea Green are both within easy reach.

### Features

- Share of Freehold
- Lift
- Three Bedrooms
- Popular Location
- Two Bathrooms
- Lovely Views

# Draycott Place, London, SW3



## Third Floor

Total area (approx.): 89.99 sq. m (969 sq. ft)