



## Finchley Lane, NW4

£1,000,000

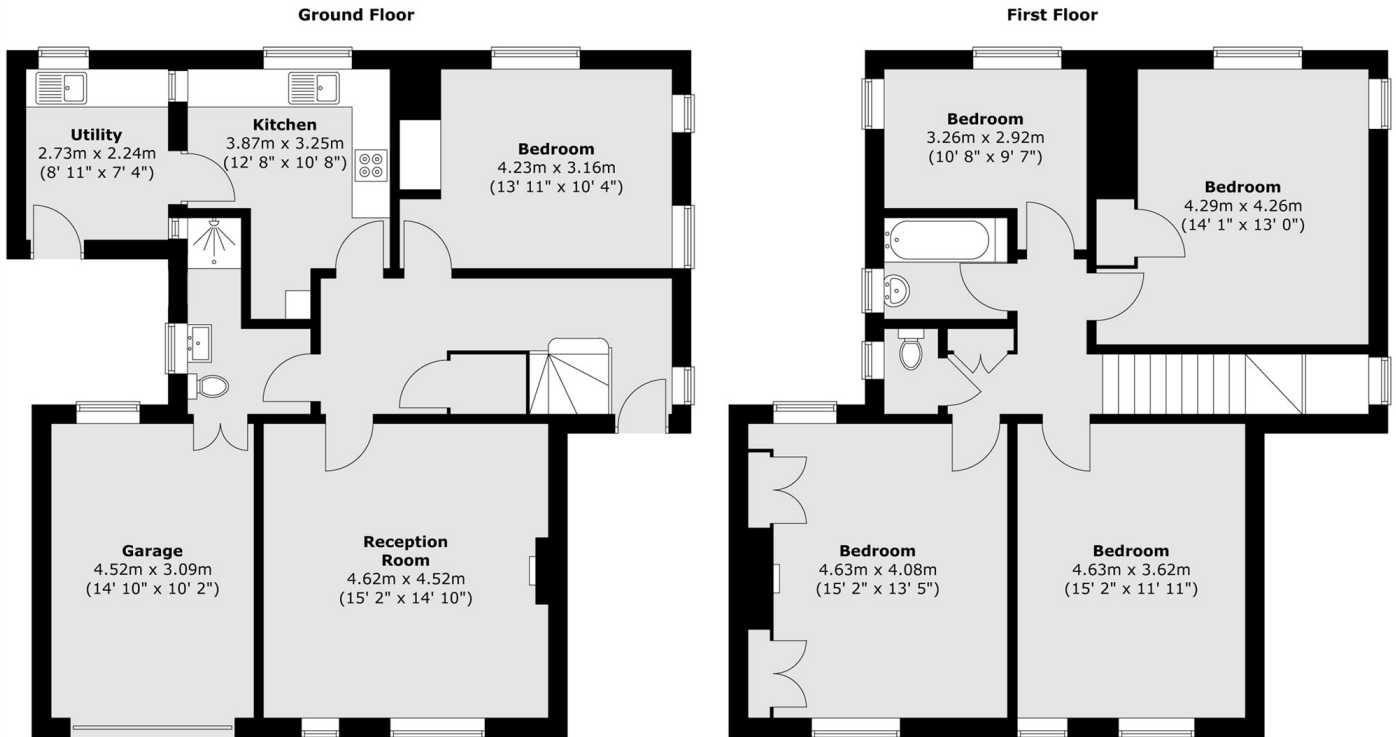
A fantastic opportunity to purchase this four bedroom detached house in the heart of Hendon. This charming property benefits from two reception rooms, a garage, a large garden, off-street parking and lots of extension/development potential.

Finchley Lane is a popular road in the heart of Hendon, close to Brent Street and within easy access of local amenities.

### Features

- Detached House
- Four Bedrooms
- Two Bathrooms
- Garage
- Off-Street Parking
- Potential to Extend/Develop

# Finchley Lane, London, NW4



Total area (approx.) : 165.3 sq. m (1779 sq. ft)