



Pavana Square, TW8

£2,100 Per calendar month

A brand new one bedroom apartment in the Kew Bridge Rise development. Featuring a modern open plan living space with floor to ceiling windows. Residents benefit from on-site amenities including a fully equipped gym, concierge service, workspaces, and access to beautifully landscaped communal podium gardens.

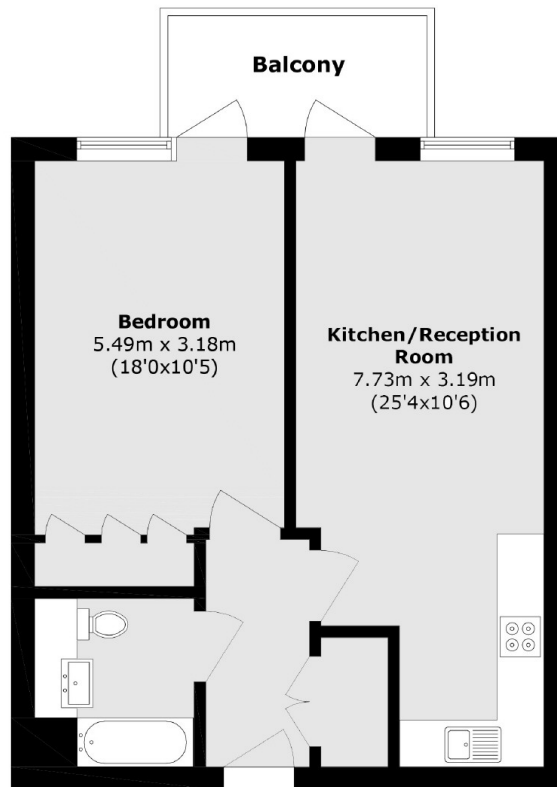
This apartment benefits from a vibrant and well-connected surrounding area. The development is close to green spaces such as Royal Botanic Gardens at Kew, Syon Park, and the River Thames. Just a short distance away, Brentford High Street offers a variety of shops, restaurants, and cafés.

The area offers excellent transport links. Just a short distance away, you'll find Kew Bridge and Brentford Stations, both providing direct trains to Central London. A quick bus ride or drive takes you to South Ealing Station, offering the Piccadilly Line, or Gunnersbury Station,

Features

- Brand new apartment
- Private Balcony
- Residents Gym
- Concierge
- Communal Gardens
- Open Plan Living

Pavana Square, Brentford, TW8



Total area (approx.): 50.1 sq. m (539.3 sq. ft)

Balcony area (approx.): 5.1 sq. m (55.0 sq. ft)