



Flat 1a, 47 Wyndham Road, Salisbury, Wiltshire, SP1 3AB

£1,185 PCM

Description:

Key Points:

- Two bedrooms
- Fully refurbished
- New kitchen
- New bathroom
- Large lounge
- Private garden
- Garage included
- Off-street parking
- Gas central heating
- Unfurnished

Location:



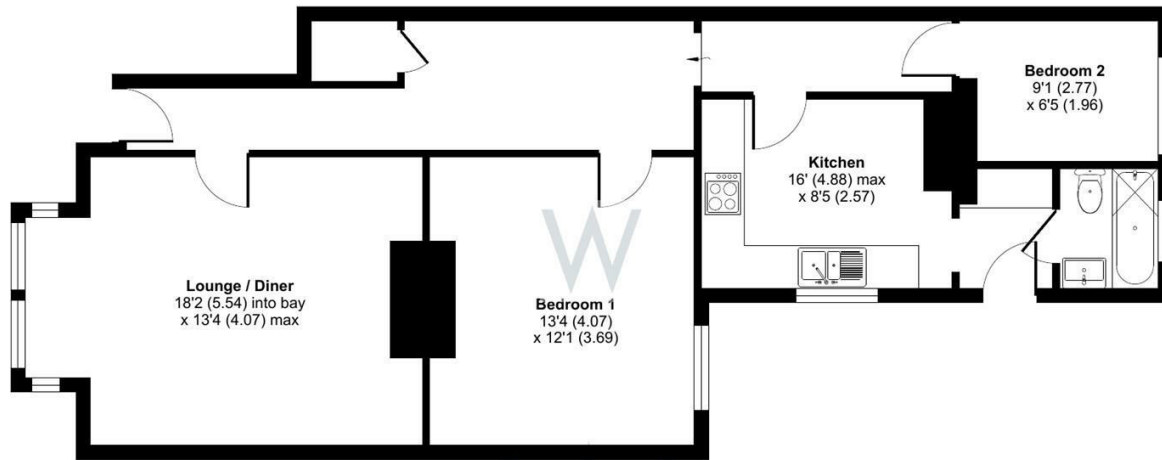


Floor Plan -

Wyndham Road, Salisbury, SP1

Approximate Area = 782 sq ft / 72.6 sq m

For identification only - Not to scale



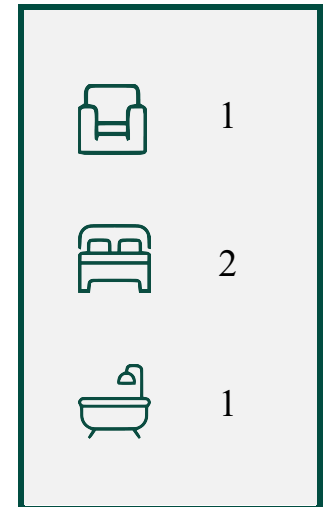
GROUND FLOOR

Floor plan produced in accordance with RICS Property Measurement Standards incorporating International Property Measurement Standards (IPMS2 Residential). © nrichecom 2025. Produced for H W White Ltd. REF: 1278459



EPC -

Energy Efficiency Rating		Current	Potential
Very energy efficient - lower running costs			
(92 plus) A			
(81-91) B			
(69-80) C			
(55-68) D		66	75
(39-54) E			
(21-38) F			
(1-20) G			
Not energy efficient - higher running costs			
England & Wales		EU Directive 2002/91/EC	



Whites Estate Agents

Castle Chambers, 47 Castle Street,
Salisbury, SP1 3SP
Lettings-management@hwwhite.co.uk
01722 336 422