



WESTWOODLEBER
LET US GUIDE YOU HOME

Waterfall Close, Hoddesdon, EN11 9JX
Offers in excess of £250,000



Waterfall Close, Hoddesdon, EN11 9JX

Westwood Leber are delighted to bring to the market this spacious and well-presented two-bedroom apartment in Waterfall Close, just a short stroll from the town centre in Hoddesdon.

Offering well-balanced accommodation throughout, the property comprises a welcoming entrance hall leading into a bright and impressive open-plan lounge/kitchen/diner. This generous living space provides the perfect setting for both relaxing and entertaining, with clearly defined areas for cooking, dining and seating. The modern fitted kitchen is thoughtfully arranged with ample worktop and storage space, complementing the contemporary feel of the apartment.

The property boasts two well-proportioned double bedrooms, including a spacious principal bedroom with an en-suite, and the second bedroom offering flexibility for guests, children or home working. The apartment is further enhanced by a modern family bathroom, finished in a clean and neutral style.

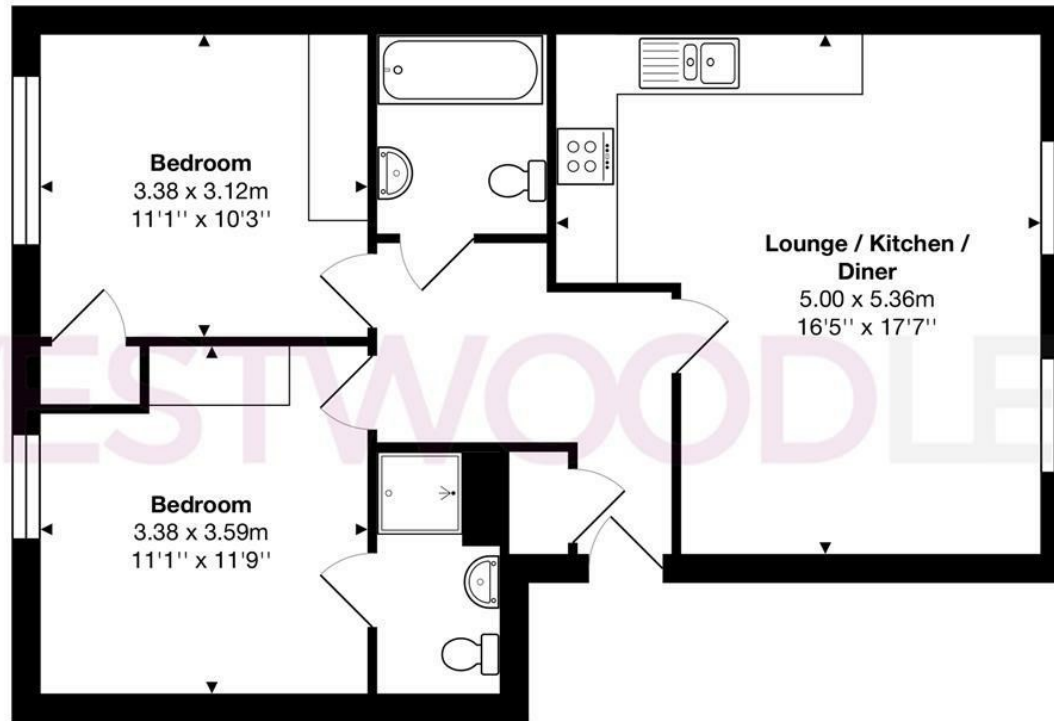
Externally, the development benefits from well-maintained communal areas and residents' parking.

Waterfall Close is superbly positioned within easy reach of Hoddesdon town centre, offering a range of shops, restaurants and amenities, as well as excellent transport links including Rye House Station providing direct services into London Liverpool Street. This attractive apartment would make an ideal first-time purchase, investment opportunity or downsizing option, and early viewing is highly recommended.



 WESTWOODLEBER

 WESTWOODLEBER
LET US GUIDE YOU HOME



Total Area: approx. 62.3 m² ... 670 ft²

THE FLOORPLAN IS FOR ILLUSTRATIVE PURPOSES ONLY AND IS NOT TO SCALE.
Measurements and features are approximate and may differ from the actual property. Verify all details independently; no liability is accepted for errors or omissions.

Property marketing provided by www.fotomarketing.co.uk





