

## Stanhope Mews West, SW7

£720 Per week

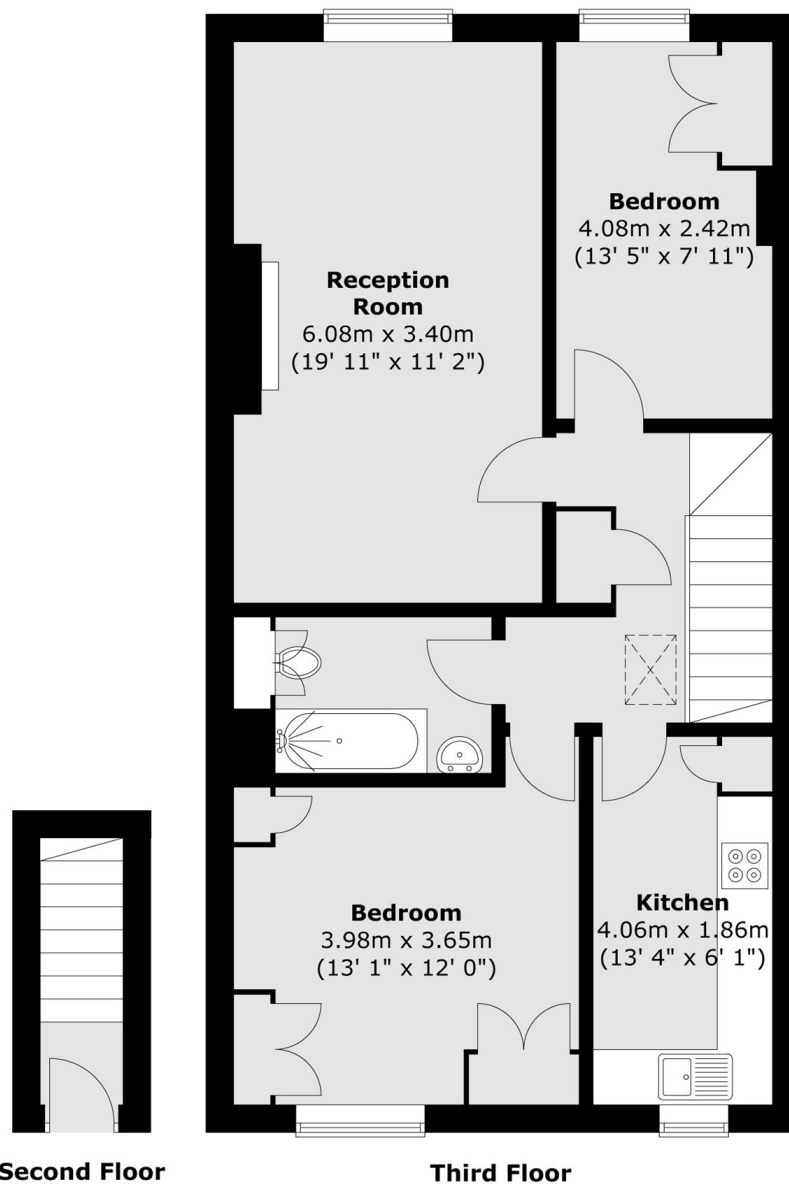
A recently refurbished two bedrooms apartment situated on the third floor, featuring wooden flooring throughout and conveniently located close to Gloucester Road Station.

Stanhope Mews West is ideally situated between South Kensington and Gloucester Road, within easy reach of a wide range of shops, restaurants, cafés, and local amenities, as well as access to the District, Circle, and Piccadilly Underground lines.

### Features

Two Bedrooms  
Wood Floors  
Separate Kitchen  
Great Location

# Stanhope Mews West, London, SW7



Total area (approx.) : 70.2 sq. m (756 sq. ft)