



Lombardy Drive, Berkhamsted HP4 2LG



Upon entering, you are greeted by a well-presented hallway leading to a spacious lounge and separate versatile reception room perfect space for both family life and entertaining. The heart of the home is the large family kitchen/breakfast room, which enjoys lovely views of the garden. A useful utility room and downstairs W/C complete the ground floor accommodation. Upstairs, the largest bedroom benefits from its own en-suite and ample fitted wardrobes, while three further well-proportioned bedrooms share a stylish family bathroom. Outside, the beautiful rear garden offers a peaceful retreat, perfect for relaxing or alfresco dining. The property also boasts driveway parking and a garage, ensuring ample space for vehicles and storage.

Situated in a desirable location, close to excellent schools, local amenities, and transport links, this is a fantastic opportunity to secure a wonderful family home in Berkhamsted.





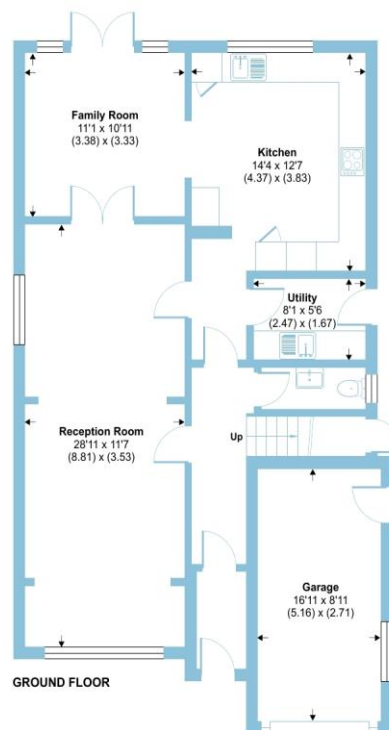
welcome to Lombardy Drive, Berkhamsted

- Extended Detached Family Home
- Four Bedrooms
- Two Reception Rooms
- Kitchen/Breakfast Room
- En-suite Shower Room

Tenure: Freehold EPC Rating: C

Offers over
£1,000,000

Situated in a desirable location close in Berkhamsted, this beautifully extended four bedroom detached home offers generous living space and a stunning rear garden.



GROUND FLOOR

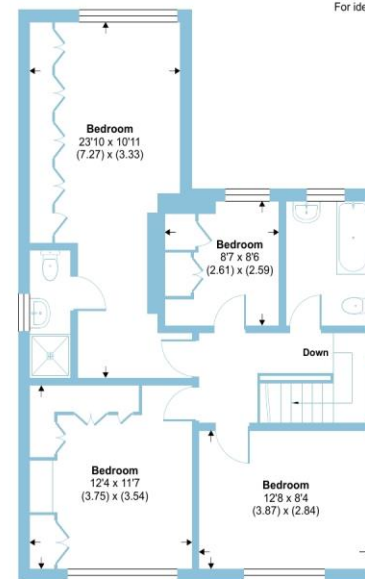
Lombardy Drive, Berkhamsted, HP4

Approximate Area = 1611 sq ft / 149.6 sq m

Garage = 151 sq ft / 14 sq m

Total = 1762 sq ft / 163.6 sq m

For identification only - Not to scale



FIRST FLOOR



Floor plan produced in accordance with RICS Property Measurement 2nd Edition, Incorporating International Property Measurement Standards (IPMS2 Residential). © nichecom 2025. Produced for Barnard Marcus. REF:1241565



check out more properties at [brownandmerry.co.uk](https://www.brownandmerry.co.uk)
see all our properties on [zoopla.co.uk](https://www.zoopla.co.uk) | [rightmove.co.uk](https://www.rightmove.co.uk) | [sequencehome.co.uk](https://www.sequencehome.co.uk)



Property Reference:
BKH102843- 0005

1. MONEY LAUNDERING REGULATIONS Intending purchasers will be asked to produce identification documentation at a later stage and we would ask for your co-operation in order that there is no delay in agreeing the sale. 2. These particulars do not constitute part or all of an offer or contract. 3. The measurements indicated are supplied for guidance only and as such must be considered incorrect. Potential buyers are advised to recheck measurements before committing to any expense. 4. We have not tested any apparatus, equipment, fixtures or services and it is in the buyers interest to check the working condition of any appliances. 5. Where an EPC, or a Home Report (Scotland only) is held for this property, it is available for inspection at the branch by appointment. If you require a printed version of a Home Report, you will need to pay a reasonable production charge reflecting printing and other costs. 6. We are not able to offer an opinion either written or verbal on the content of these reports and this must be obtained from your legal representative. 7. Whilst we take care in preparing these reports, a buyer should ensure that his/her legal representative confirms as soon as possible all matters relating to title including the extent and boundaries of the property and other important matters before exchange of contracts.



01442 870444



berkhamsted@brownandmerry.co.uk



124 High Street, BERKHAMSTED,
Hertfordshire, HP4 3AT



[brownandmerry.co.uk](https://www.brownandmerry.co.uk)