

BRUNTON

RESIDENTIAL



NORTH FARM, HOLYWELL, WHITLEY BAY, NE25

Offers Over £599,000

BRUNTON

RESIDENTIAL





BRUNTON

RESIDENTIAL



BRUNTON

RESIDENTIAL



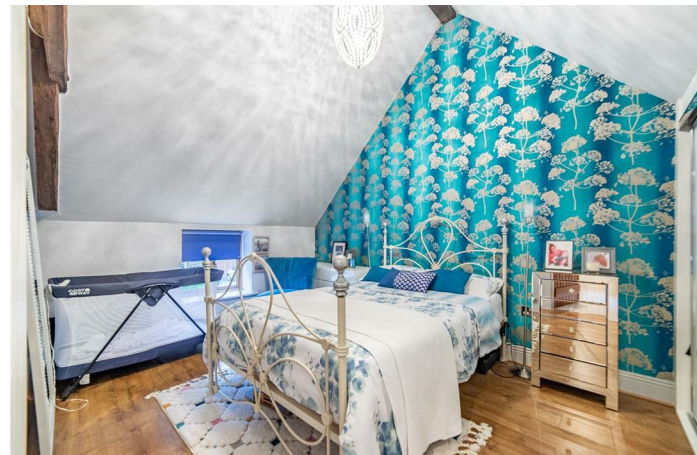
Spacious and versatile family home offering flexible accommodation arranged over two floors, set within a semi-rural position and complemented by generous outdoor space. The property blends modern finishes with character features, creating a layout well suited to family living and entertaining.

The accommodation includes a welcoming entrance hall, a modern kitchen with a central island and bi-fold doors, a spacious dining room and a bright living room with a log burner. The ground floor also benefits from a bedroom and shower room, providing excellent flexibility, while the first floor offers three further bedrooms, including one with an en-suite, a modern shower room and a versatile loft room. Externally, the property enjoys a driveway with a lawned garden and patio areas, ideal for outdoor enjoyment.

The Barn, North Farm is a simply stunning Grade 2 listed building and is situated within the desirable village of Holywell, close to the coastline and within easy reach of Whitley Bay. The area offers a peaceful setting with convenient access to local amenities, schools and transport links, providing easy connections to Newcastle upon Tyne and the wider Tyne and Wear region.

BRUNTON

RESIDENTIAL



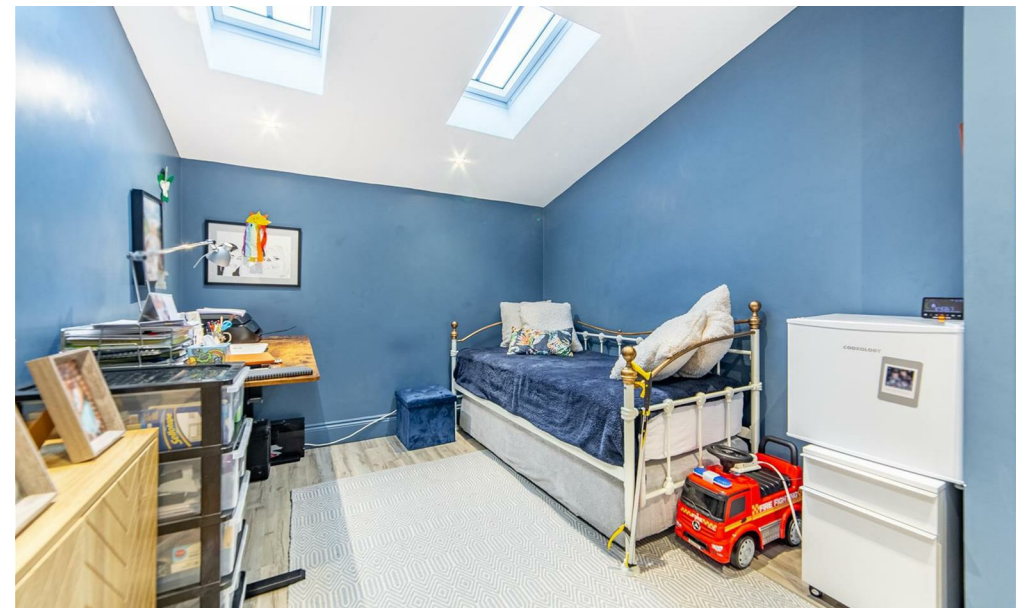
BRUNTON

RESIDENTIAL

The internal accommodation comprises: a welcoming entrance vestibule that opens into an entrance hall with a storage cupboard and French doors on either side. To the right, a modern kitchen is fitted with a range of base units surrounding a central island, which has further storage and a bar fridge. A glazed door leads from here to the front of the property, also allowing in plenty of natural light. Off the kitchen, a hallway with built-in storage and a door to the front of the property leads to a bedroom with Velux windows and a shower room with a three-piece suite and a heated towel rail. To the left of the central hallway, further French doors open into a spacious dining room with stairs to the first floor and access to a bright and generous living room, which benefits from two sets of doors to the front of the property as well as a feature fire.

To the first floor, a versatile loft room, enjoying Velux windows, leads to a hallway with built-in wardrobes and through to a large bedroom, also benefiting from Velux windows and an en-suite bathroom with a heated towel rail. The loft room then provides further access to another hallway, which leads to a modern shower room, which serves two well-proportioned bedrooms - one of which enjoys built-in wardrobes.

Externally, there is a double driveway which provides off-street parking for multiple vehicles and leads to the former garage, which is now used as a store. The front of the property benefits from a lawned garden with paved patio areas and is surrounded by a stone wall.



BRUNTON

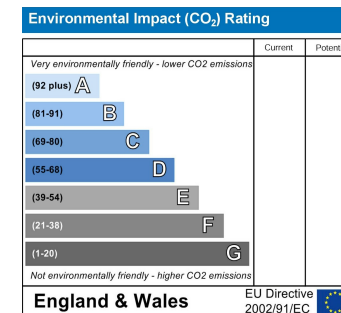
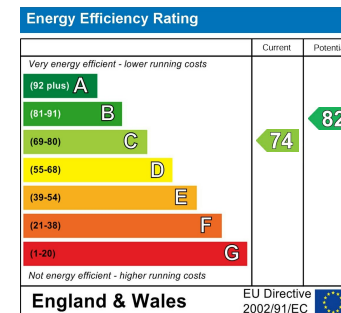
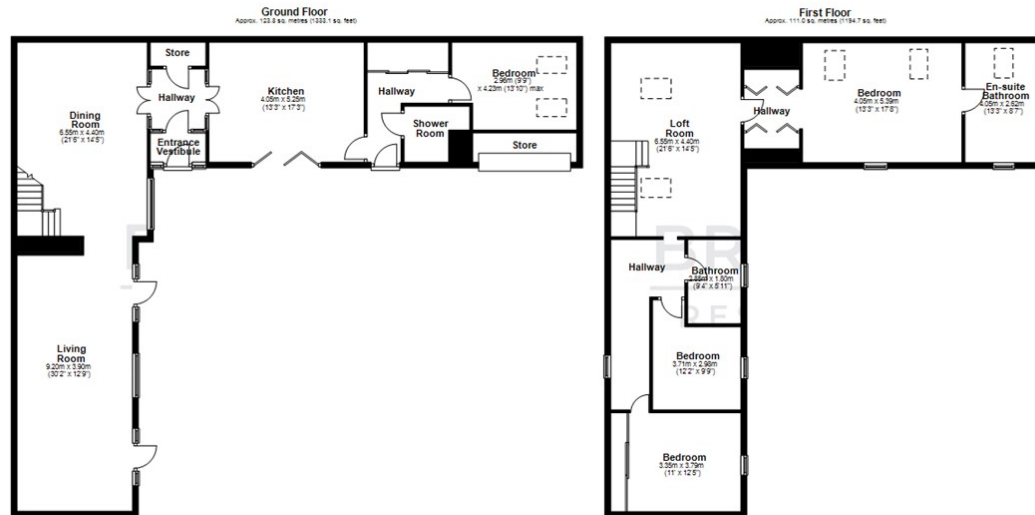
RESIDENTIAL

TENURE : Freehold

LOCAL AUTHORITY : Northumberland CC

COUNCIL TAX BAND : F

EPC RATING : C



All measurements are approximate and are for guidance only. The purchaser will verify.