



**Guide Price**  
**£300,000**

**Freehold**

3x  1x  2x 

**Crosley Road,  
Gillingham, Kent, ME7**

**OVER 60?**

Secure this property  
for up to **59% less!**

*Wards*  
Helping you move forwards

## Accommodation

### GROUND FLOOR

Porch

Hallway

Lounge: 13'11 into bay x 13'3 (4.24m x 4.04m)

Dining Room: 11'4 x 11'1 (3.46m x 3.38m)

Kitchen: 16'0 x 9'2 (4.88m x 2.80m)

Lobby

Separate Toilet

### BASEMENT

Cellar

### FIRST FLOOR

Landing

Bedroom 1: 17'11 x 11'0 (5.46m x 3.36m)

Bedroom 2: 11'3 x 11'3 (3.43m x 3.43m)

Bedroom 3: 10'4 x 9'5 (3.15m x 2.87m)

Bathroom

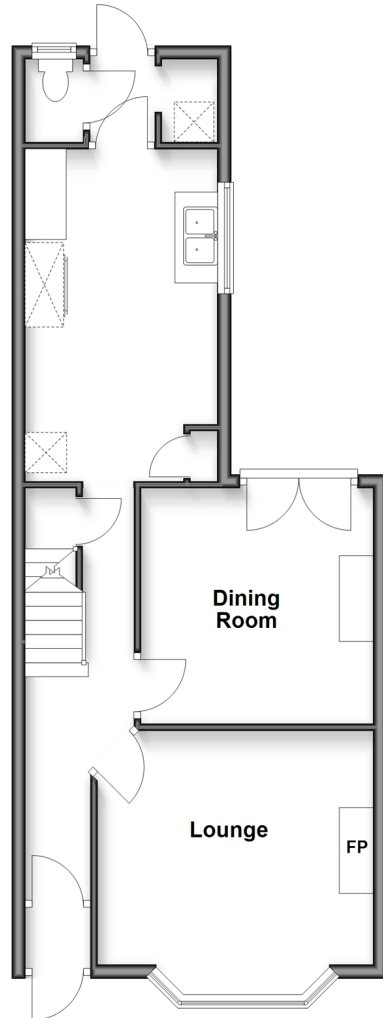
### OUTSIDE

Front Garden

Rear Garden

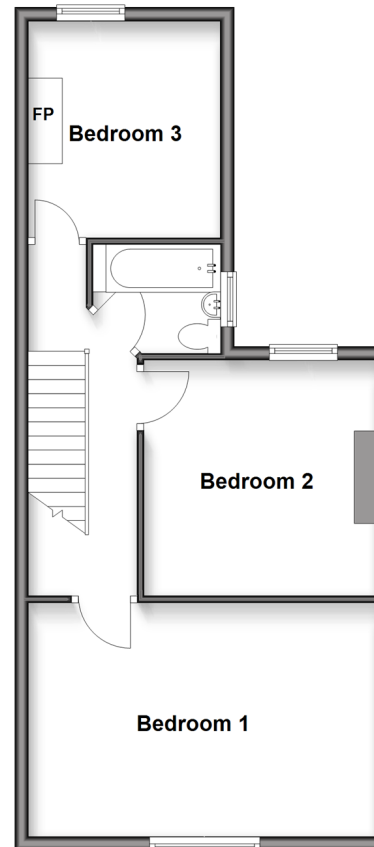
### Ground Floor

Approx. 53.6 sq. metres (576.6 sq. feet)



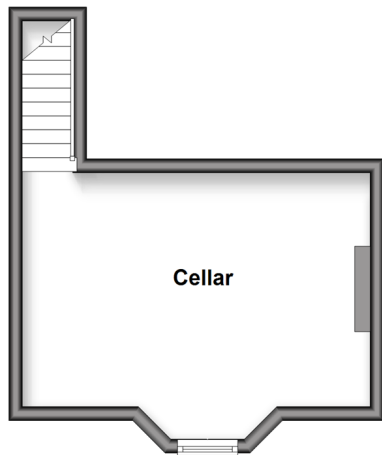
### First Floor

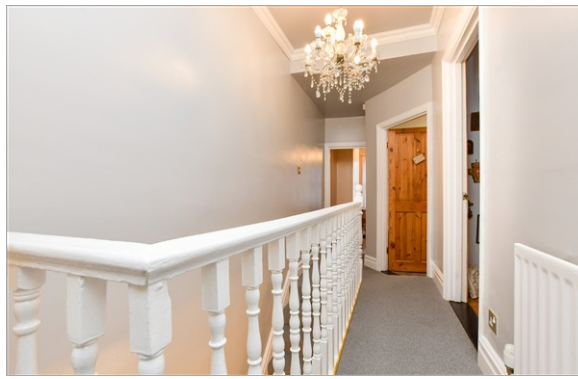
Approx. 49.5 sq. metres (532.8 sq. feet)



### Basement

Approx. 19.8 sq. metres (213.4 sq. feet)





## Main features

- Popular Upper Gillingham location
- Useful large cellar
- Gas central heating and part double glazing
- Spacious period home with many character features including high ceilings and fireplaces
- Excellent road access throughout Medway and beyond

## Nearest Schools

Primary Schools: Byron Primary 0.3 miles, Luton Junior School 0.4 miles, Napier Community Primary and Nursery School 0.5 miles

Secondary Schools: Chatham Grammar School for Girls

## Transport Information

Train Stations: Gillingham 0.8 miles, Chatham 1.4 miles, Rochester 1.9 miles

## Address

Crosley Road, Gillingham, Kent, ME7

## Directions

For directions to this property please contact us.



*Wards*  
Helping you move forwards

Call Gillingham Branch 01634 851191 ■ [wardsofkent.co.uk](http://wardsofkent.co.uk)



- Legal advice should be taken to verify fixtures/fittings, planning, alterations and/or lease details
- Appliances & services are untested, dimensions are approximate and floor plans are not to scale
- Through a Homewise Home For Life Plan people aged 60+ can secure this property for up to 50% less, by purchasing a Lifetime Lease

EPC RATING

CURRENT:	POTENTIAL:
D(57)	B(84)

11022404/20251209/GS/GS