



Glebe Mews, Bedlington, NE22 6LJ

Offers Over £310,000

**Harpers** | POWERED BY **exp** UK  
property people



**Bedrooms: 4 | Bathrooms: 1 | Receptions: 3**

On the market for the first time in decades, this substantial detached dormer-bungalow, located in a desirable residential cul-de-sac within the popular Chesters development, offers exceptional space and versatile living. The ground floor welcomes you with a generously proportioned, front-aspect living room, providing an ideal setting for relaxation, complemented by a convenient ground floor WC. The heart of the home is the full-width kitchen/diner, designed for both everyday meals and entertaining. Adjacent to the dining area, a West facing conservatory extends the living space, offering tranquil garden views. Ascending to the first floor, you will find four well-appointed bedrooms, each offering comfortable living. These are served by a spacious four-piece family bathroom, ensuring ample facilities for a busy household. The first floor also features flexible accommodation with the option of a fifth bedroom or a dedicated home office/craft room. Externally the property benefits from a wide plot to the rear, encompassing an enclosed Westerly aspect garden, perfect for outdoor enjoyment. Parking is plentiful with a double garage and a multi-car driveway, accommodating several vehicles with ease. This well-proportioned home provides an outstanding opportunity to acquire a substantial property in a sought-after location.

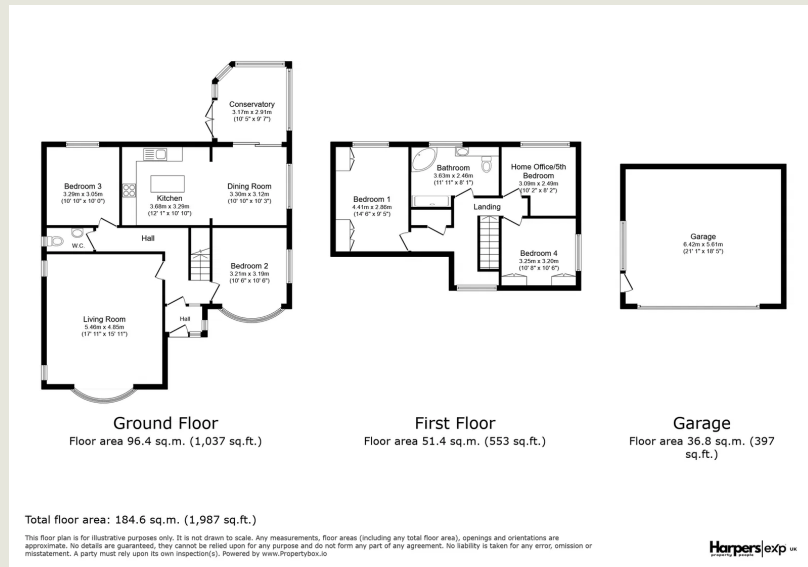
- Detached Dormer-Bungalow
- Four Bedrooms + 5th Bedroom or Home Office/Craft Room
- First Floor 4-Piece Family Bathroom & Ground Floor WC
- Substantial Front Aspect Living Room
- Full Width Kitchen/Diner
- Conservatory Off Dining Room
- Double Garage & Multi-Car Driveway
- Wide Plot To Rear With Enclosed West Facing Rear Garden
- Desirable Residential Location
- On Market For First Time In Decades











**Harpers Property People**

80 Windsor Gardens, Bedlington, NE22 5SY

07813 673 606

[ali@harpersproperty.com](mailto:ali@harpersproperty.com)

<https://harpersproperty.com>

**Harpers**exp POWERED BY **UK**  
property people