



## Molesworth Street, SE13

£1,600 Per calendar month

A beautifully presented studio flat offering high-spec modern fixtures and fittings throughout. The property offers stylish wooden flooring, efficient central heating, and double glazing, providing comfort and energy efficiency. Residents also benefit from a concierge and access to three roof terraces.

Part of the new Riverdale House development, this fantastic, ground floor studio flat is located a short walk from Lewisham mainline and DLR station so perfect for anyone working in the City or Canary Wharf.

### Features

- Studio Flat
- High Specification
- Smart Kitchen
- Wooden Flooring
- Private Development
- Close To Lewisham Station

Molesworth Street,  
London, SE13

# Molesworth Street

Approximate Gross Internal Area  
34.2 sq m / 368 sq ft

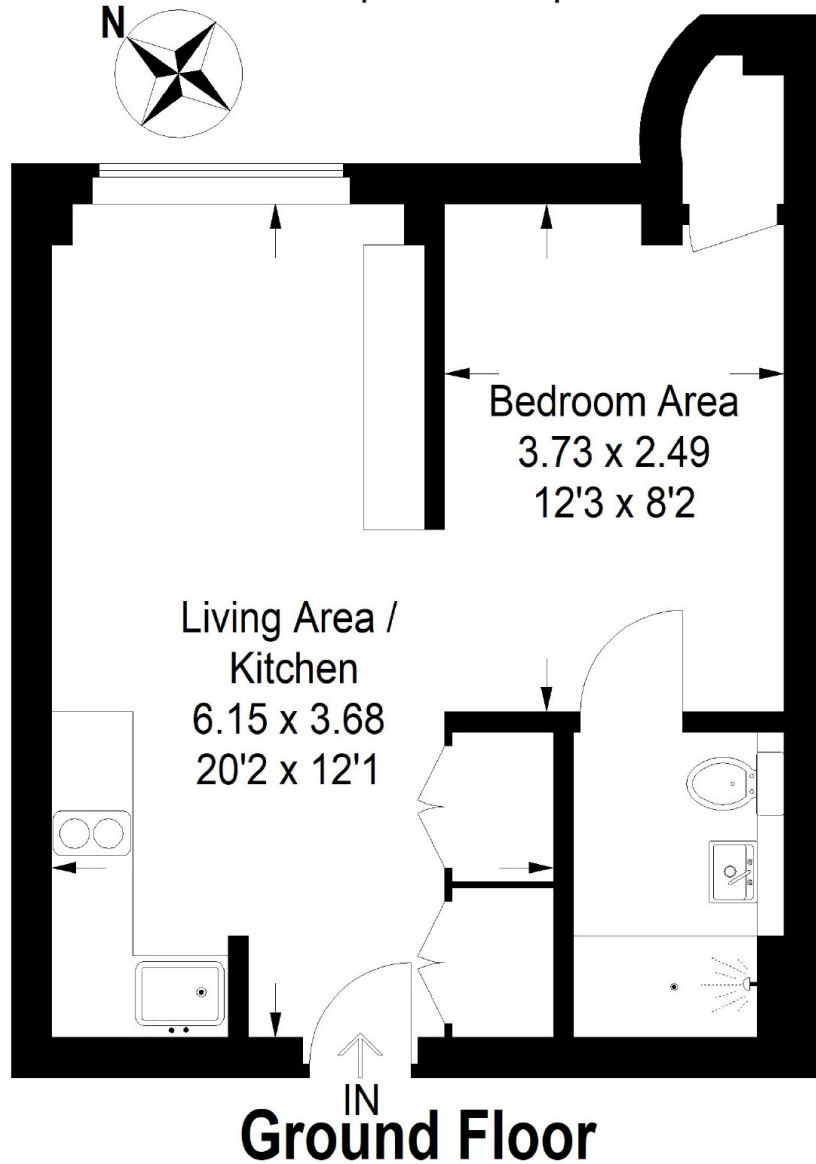


Illustration for identification purposes only,  
measurements are approximate.

Drawn for Sebastian Roche

**Dexters**

Lewisham  
228 Algernon Road  
London  
SE13 7AG

Lettings  
0208 690 8020

Energy Rating: C. We aim to make our particulars both accurate and reliable. However they are not guaranteed; nor do they form part of an offer or contract. If you require clarification on any points then please contact us, especially if you're traveling some distance to view. Please note that appliances and heating systems have not been tested and therefore no warranties can be given as to their good working order.

 **RICS** | Regulated  
Estate Agent  
and Letting Agent

dexters.co.uk