



STEPHENSON BROWNE

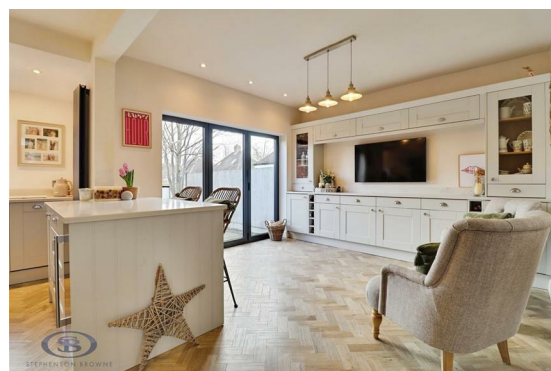
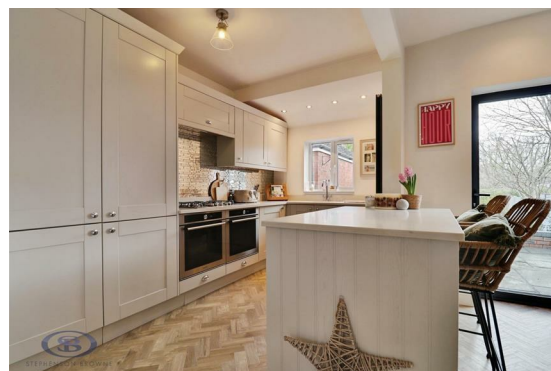
**Milborne Drive,
Newcastle**
ST5 3EP



£300,000

DESCRIPTION

Positioned on the highly desirable Milborne Drive, this exceptional three-bedroom semi-detached home offers superb kerb appeal and a high-quality finish throughout, providing stylish and modern family living. The property benefits from a private driveway offering ample off-road parking and leading to a detached garage with an electric shutter door. Internally, a welcoming entrance hall leads to a beautifully presented living room at the front of the property, featuring a bay window and a charming log burner with built-in shelving and cupboard space on either side. To the rear is a stunning open-plan kitchen and dining area, forming the heart of the home. This contemporary space includes a gas hob, built-in double oven, integrated appliances, a breakfast bar with an integrated wine cooler, and a bespoke media wall. Bi-fold doors open onto the rear garden, creating a bright and sociable space ideal for modern living and entertaining. The ground floor also benefits from a convenient downstairs W.C. Upstairs offers three well-proportioned bedrooms, including a spacious principal bedroom and a strong double second bedroom. Unlike many similar homes, the third bedroom is also a generous size, making it ideal as a bedroom, nursery or home office. The floor is completed by a modern family bathroom finished to a high standard. Externally, the rear garden provides



real wow factor, featuring a patio seating area perfect for outdoor dining, steps leading down to a pond feature, a lawned area and an additional paved seating space. Finished to an excellent standard throughout, this impressive home is ideal for buyers seeking a stylish, move-in ready property in a highly sought-after residential location.

Council Borough: Newcastle-under-Lyme Borough Council
Council Tax Band: C
Tenure: Freehold



ROOM DESCRIPTIONS

Ground Floor

Entrance Hall

Living Room

11'1" x 13'4"

Kitchen/Dining Room

18'7" x 12'3"

W.C.

4'8" x 2'4"

First Floor

Bedroom One

11'1" x 13'7"

Bedroom Two

11'11" x 9'11"

Bathroom

8'1" x 5'5"

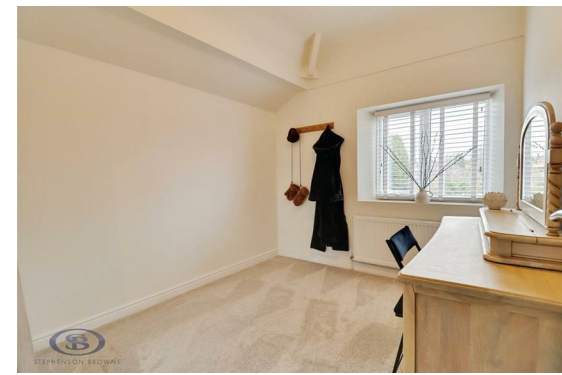
Bedroom Three

8'3" x 8'9"

Garage

8'1" x 15'3"











STEPHENSON BROWNE

Viewing

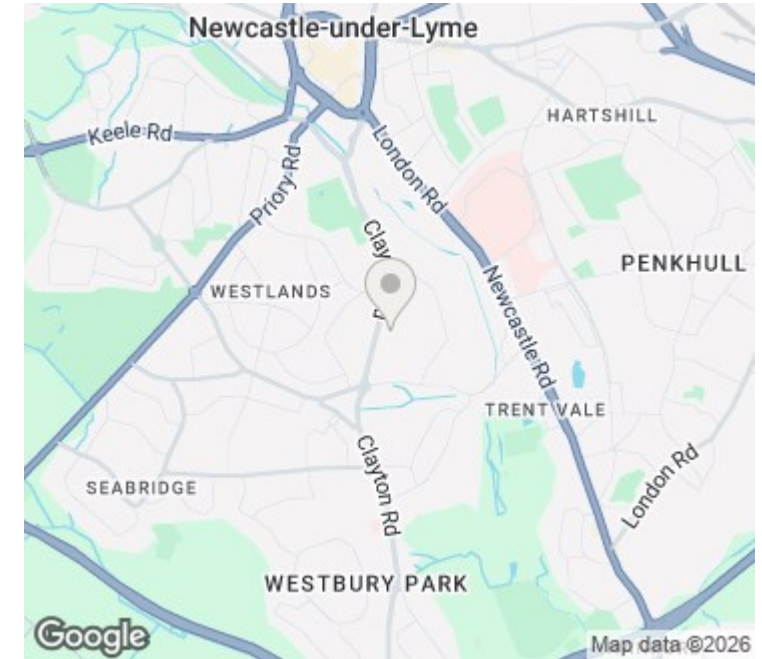
Please contact our office using the details provided below if you are interested in booking a viewing or require further information.

Floorplans

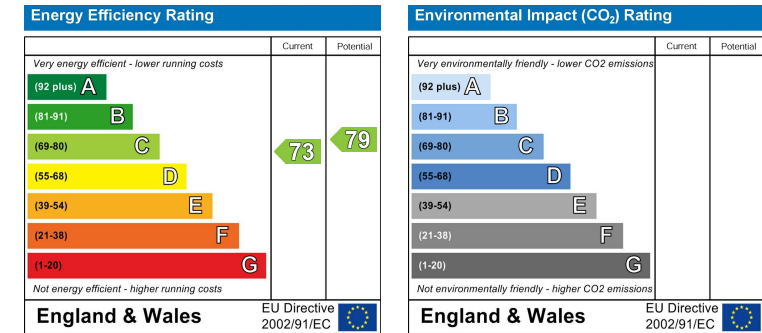


Whilst every attempt has been made to ensure the accuracy of the floorplan contained here, measurements of doors, windows, rooms and any other items are approximate and no responsibility is taken for any error, omission or mis-statement. This plan is for illustrative purposes only and should be used as such by any prospective purchaser. The services, systems and appliances shown have not been tested and no guarantee as to their operability or efficiency can be given.
Made with Metropix ©2025

Area Map



EPC Rating



NOTICE: Stephenson Browne for themselves and for the vendors or lessors of this property whose agents they are give notice that: (1) the particulars are set out as a general guideline only for the guidance of intending purchasers or lessees, and do not constitute, nor constitute part of, an offer or contract; (2) all descriptions, dimensions, references to condition and necessary permissions for use and occupation, and other details are given in good faith and are believed to be correct but any intending purchasers or tenants should not rely on them as statements or representations of fact but must satisfy themselves by inspection or otherwise as to the correctness of each theme; (3) no person in the employment of Stephenson Browne has any authority to make representation or warranty whatever in relation to this property. (4) fixtures & fittings are subject to a formal list supplied by the vendors solicitors. **Referring to:** Move with Us Ltd **Average Fee:** £123.64

56 Merrial Street, Newcastle Under Lyme, Staffordshire, ST5 2AW

01782 625734

newcastle@stephensonbrowne.co.uk

www.stephensonbrowne.co.uk



STEPHENSON BROWNE