



Heartwood Boulevard, W3

£450,000

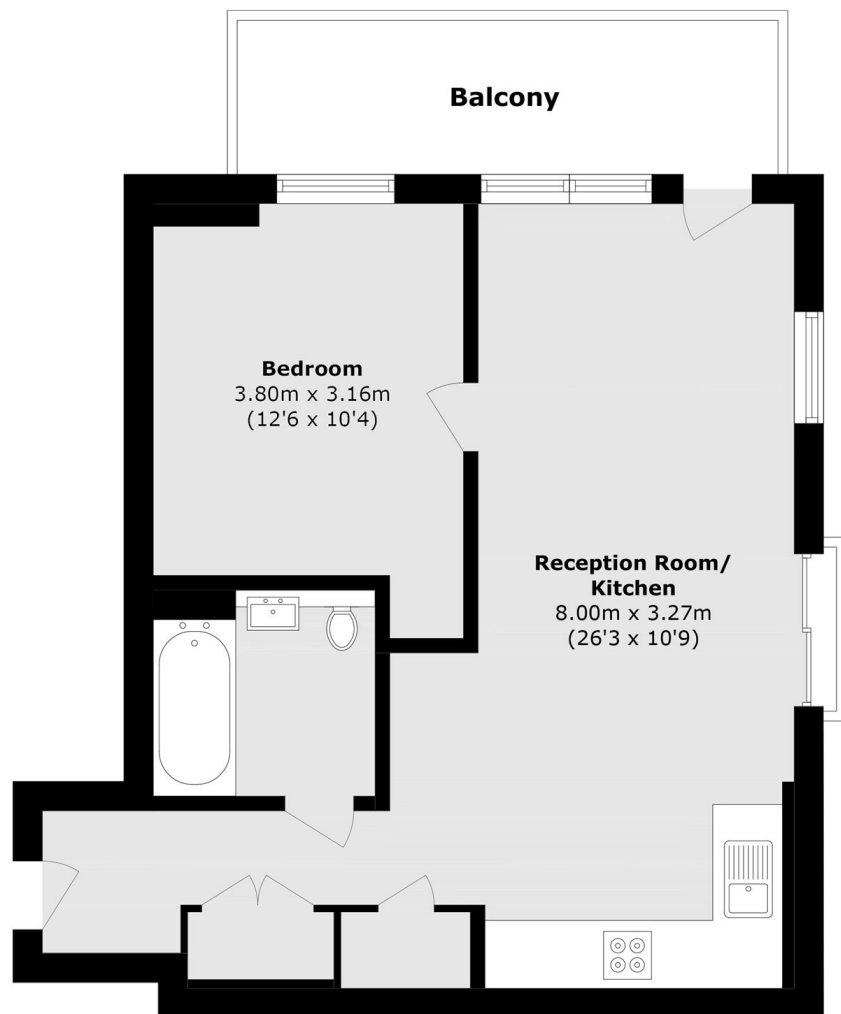
Situated on the 23rd floor of this imposing building, A stunning top floor one bedroom apartment with panoramic views across central London. The apartment has floor to ceiling windows which allow an abundance of natural light, a large private balcony and 24 -hour concierge. Additionally a residence gym and business lounge will be open later in the year.

Moments away from Acton Main Line station (Elizabeth line) and just over half a mile from Acton Central station (Overground). Together with Springfield Park and the amenities of Churchfield Road within walking distance.

Features

- One Double Bedroom
- 23rd Floor
- Private Balcony
- 24-Hour Concierge
- Elizabeth Line
- No Onward Chain

Heartwood Boulevard, London, W3



Total area (approx.): 53.7 sq. m (578.0 sq. ft)

Balcony area (approx.): 8.6 sq. m (92.5 sq. ft)