



Northesk House, Tent Street  
London E1 5DS

Guide Price £375,000 - £400,000

  
elms  
ESTATES

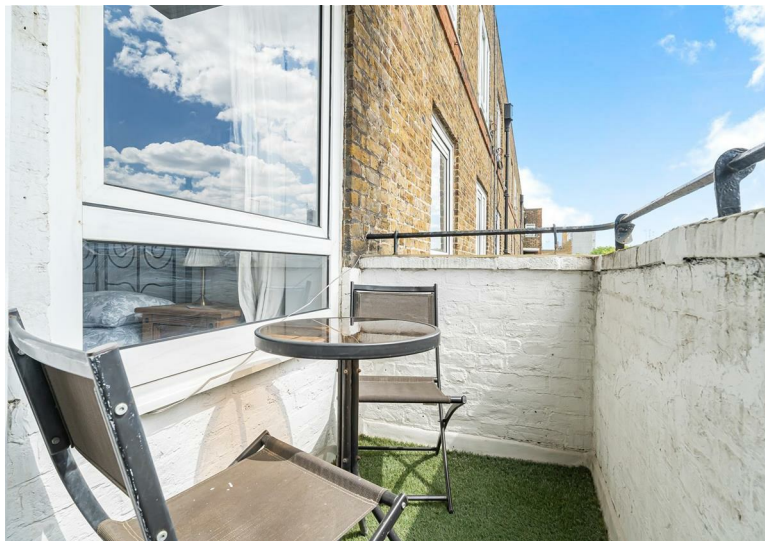
GUIDE PRICE £375,000 - £400,000 Elms Estates are absolutely delighted to be able to bring to the market For Sale this Amazing Two Double Bedroom Apartment situated on the third floor with its own balcony offering views across The City.

Northesk House is situated just moments from Bethnal Green Road with numerous Green Spaces such as Weaver's Fields, Bethnal Green Gardens, Museum Gardens, St Bartholmew Gardens within easy reach. It has Excellent Transport Links such as Whitechapel Station, Bethnal Green Underground & Overground Stations close by, offering 6 different TFL Lines. It is a short walk to the famous Brick Lane & Shoreditch High Street and close to many superb Local Amenities and an abundance of Shops, Restaurants and Cafes.

Internally the property is bright and spacious throughout with a good size reception room that gives you access to the balcony with views over London, Separate kitchen, Two double bedrooms and a modern shower room with separate W/C.

Northesk House is offered to the market on a chain free basis and really does offer a unique and rare property purchase. An early internal inspection is highly recommended in order to avoid disappointment.

For more information or to arrange a viewing please do not hesitate to call in and speak with one of our Property Consultants.



## Reception

13'1" x 10'9" (4.0 x 3.3)



## Kitchen

9'10" x 7'6" (3.0 x 2.3)



## Bedroom One

12'9" x 12'5" (3.9 x 3.8)



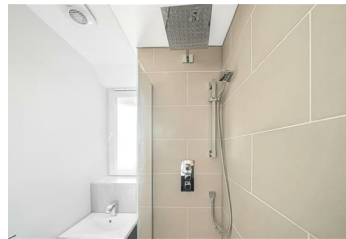
## Bedroom Two

13'1" x 8'6" (4.0 x 2.6)

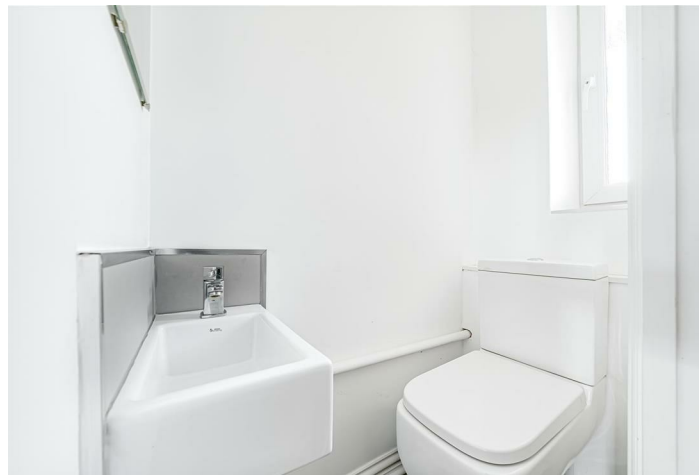


## Shower Room

7'6" x 4'3" (2.3 x 1.3)



## W/C



## Balcony



## Material Information

Tenure: Leasehold

Length Of Lease: Approx 88 Years remaining

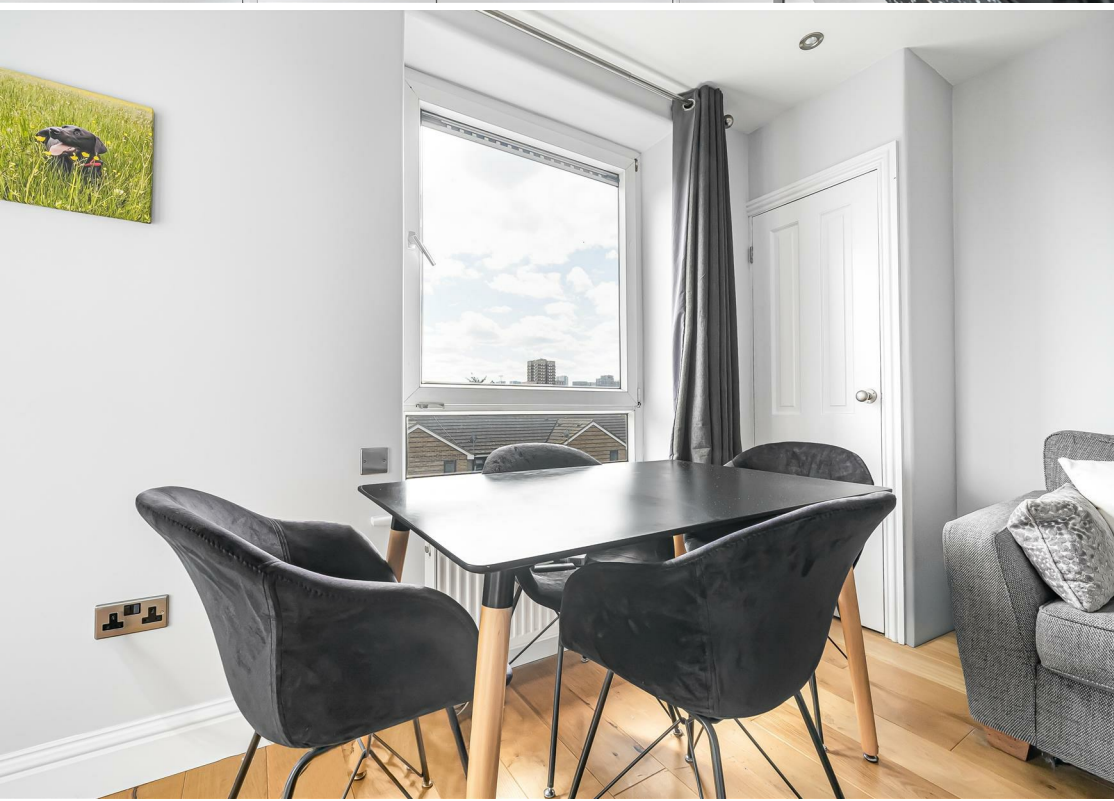
Annual Service Charge: £2,195.60

Annual Ground Rent: £10.00

Council Tax Band: B

## Marketing Disclaimer

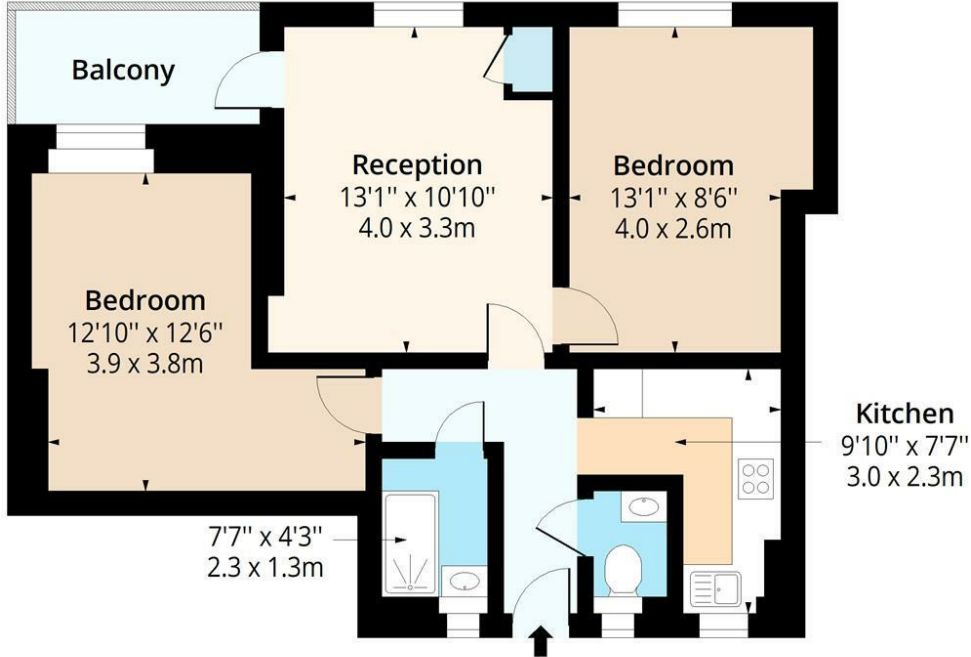
These particulars are intended to give a fair description of the property, but their accuracy cannot be guaranteed and they do not constitute an offer or contract. Any intending purchaser must rely on their own inspection and enquiries. All measurements, areas and distances are approximate and are for guidance purposes only. Photographs and floor plans are for illustrative purposes only and some images may have been digitally enhanced for marketing purposes. Fixtures, fittings and services have not been tested and no warranty is given as to their condition or suitability. Leasehold, new build and service charge information (where applicable) is provided in good faith and should be verified by the buyer's solicitor. EPC ratings are correct at the time of marketing and are subject to change. No person in the employment of Elms Estates has authority to make or give any representation or warranty in relation to this property.





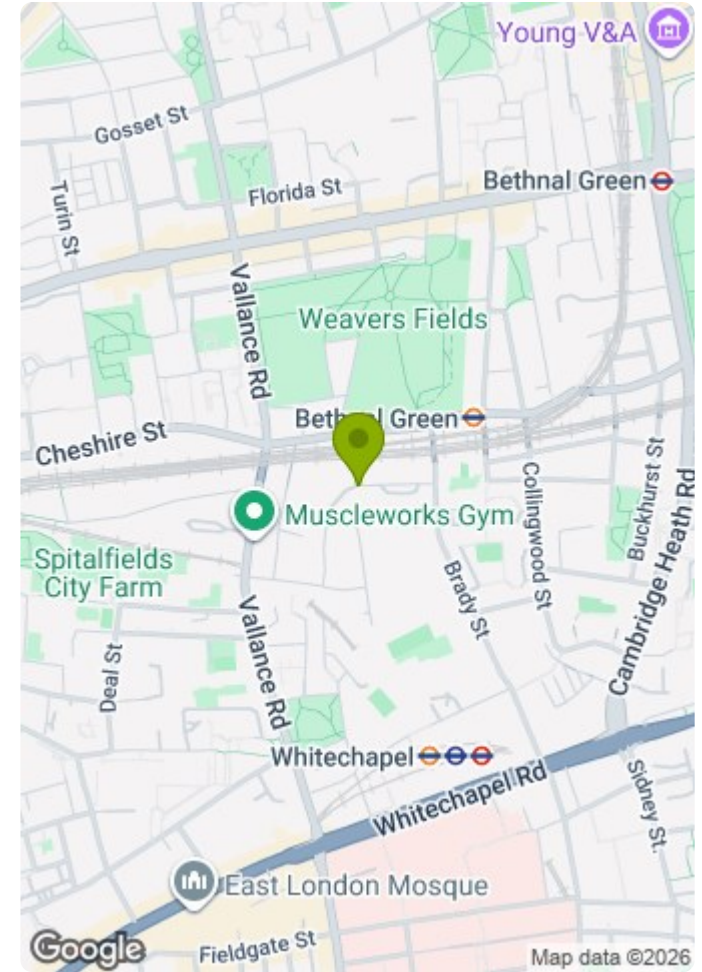
# Northesk House E1

Approx. Gross Internal Area 592 Sq Ft - 55.00 Sq M  
 Approx. Gross Balcony Area 45 Sq Ft - 4.18 Sq M



## Third Floor

Floor Area 592 Sq Ft - 55.00 Sq M



Measured according to RICS IPMS2. Floor plan is for illustrative purposes only and is not to scale. Every attempt has been made to ensure the accuracy of the floor plan shown, however all measurements, fixtures, fittings and data shown are an approximate interpretation for illustrative purposes only. 1 sq m = 10.76 sq feet.

lpaplus.com

Date: 13/5/2026

