

21 Hampden Close

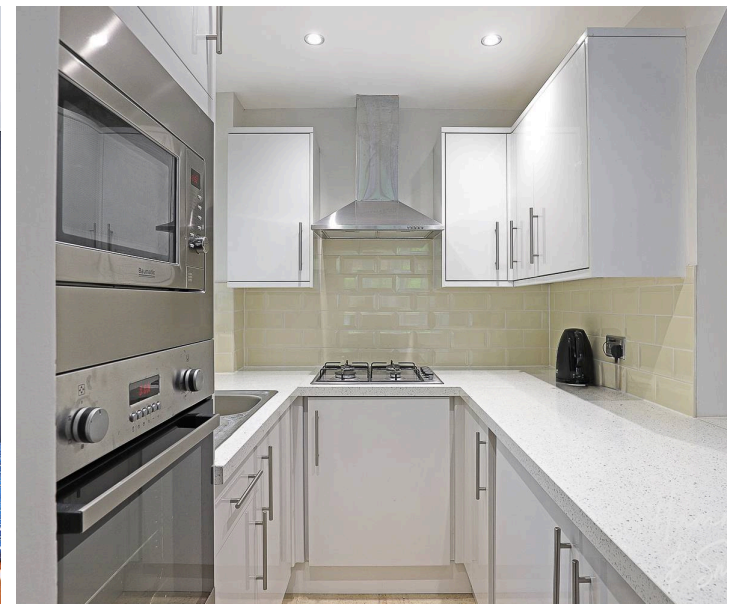
North Weald, Epping

Welcome to Hampden Close. A superb one bedroom home, lovingly cared for inside and out. Sat in the much-loved village of North Weald, this is a great find for first-time buyers, downsizers, or even apartment owners looking for outdoor space.

Council Tax band: C

Tenure: Freehold

- Ideal for First Time Buyers & Downsizers
- Open Plan Living
- Lovely Garden Area
- Shower Room
- Allocated Parking
- In the Much-Loved Village of North Weald



Front Door

Porch

Lounge/Dining Area

17' 2" x 12' 8" (5.24m x 3.86m)

Kitchen

7' 7" x 6' 3" (2.31m x 1.90m)

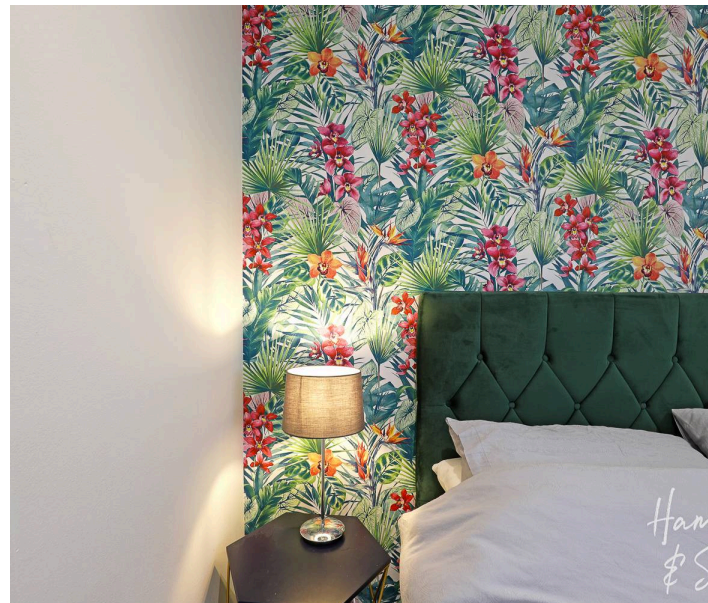
Stairs Leading To

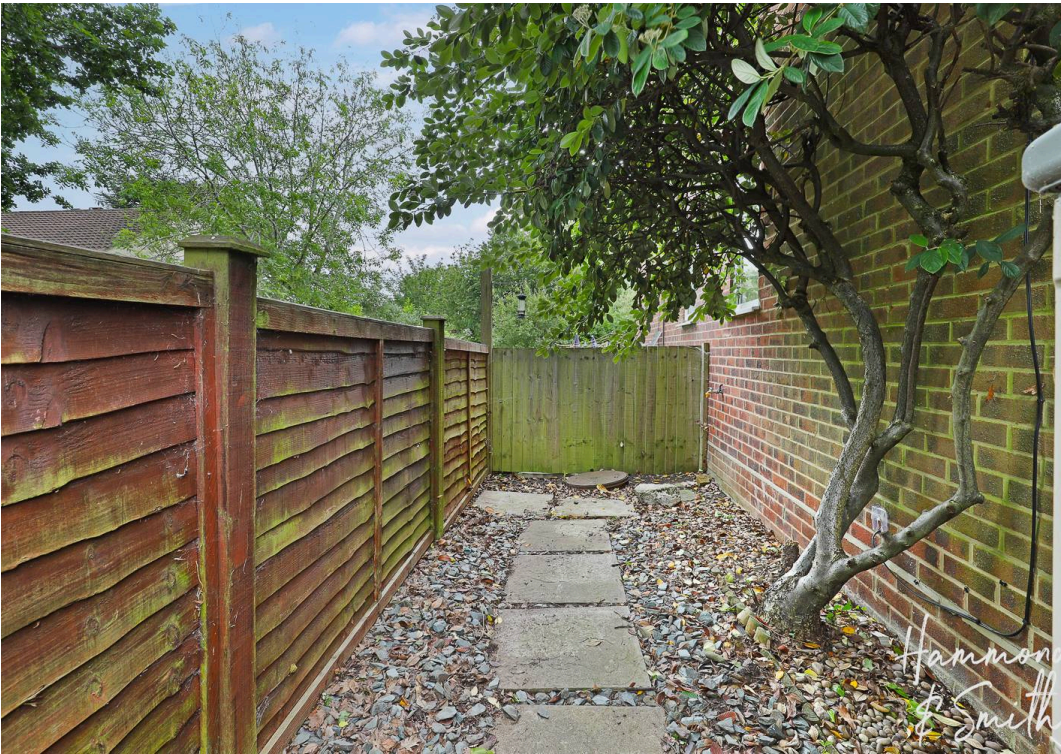
Bedroom One

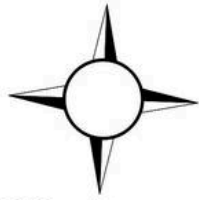
12' 8" x 8' 10" (3.86m x 2.70m)

Shower Room

6' 4" x 5' 11" (1.93m x 1.80m)

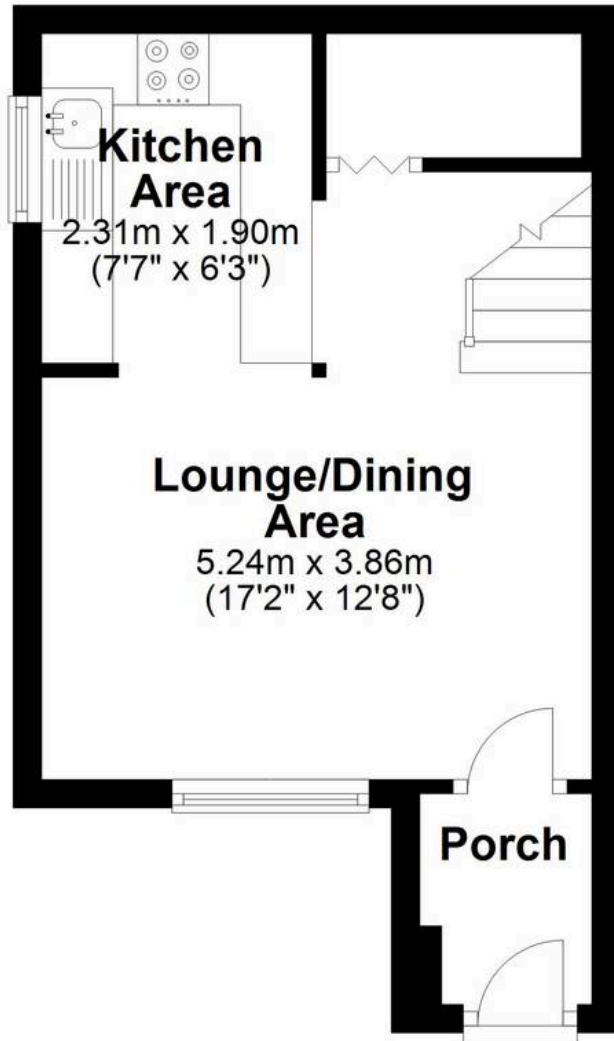






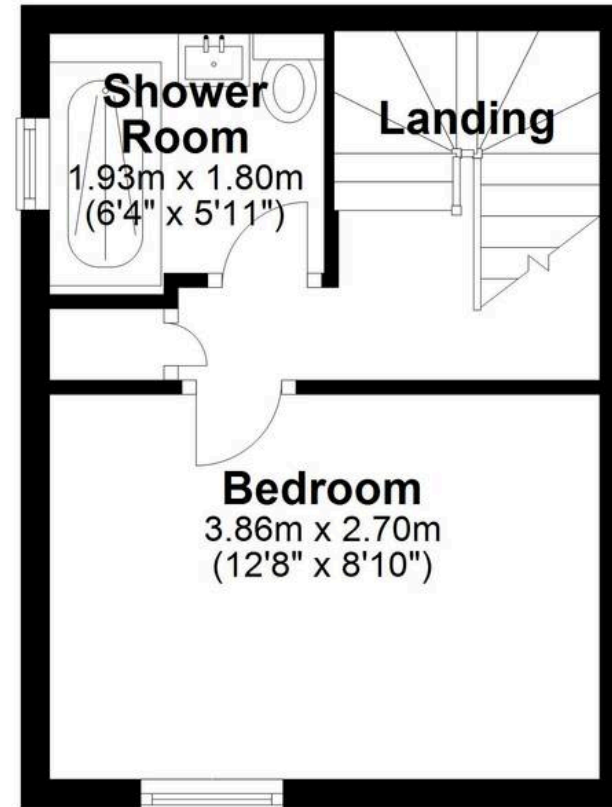
Ground Floor

Approx. 22.1 sq. metres (238.3 sq. feet)



First Floor

Approx. 20.2 sq. metres (217.6 sq. feet)



Total area: approx. 42.4 sq. metres (455.9 sq. feet)