



## KEW BRIDGE ROAD, TW8

£500,000

Two bedrooms  
Two bathrooms  
River views  
Fantastic condition  
Close to transport  
Energy rating: b

@marshandparsons  
marshandparsons.co.uk

MARSH &  
PARSONS



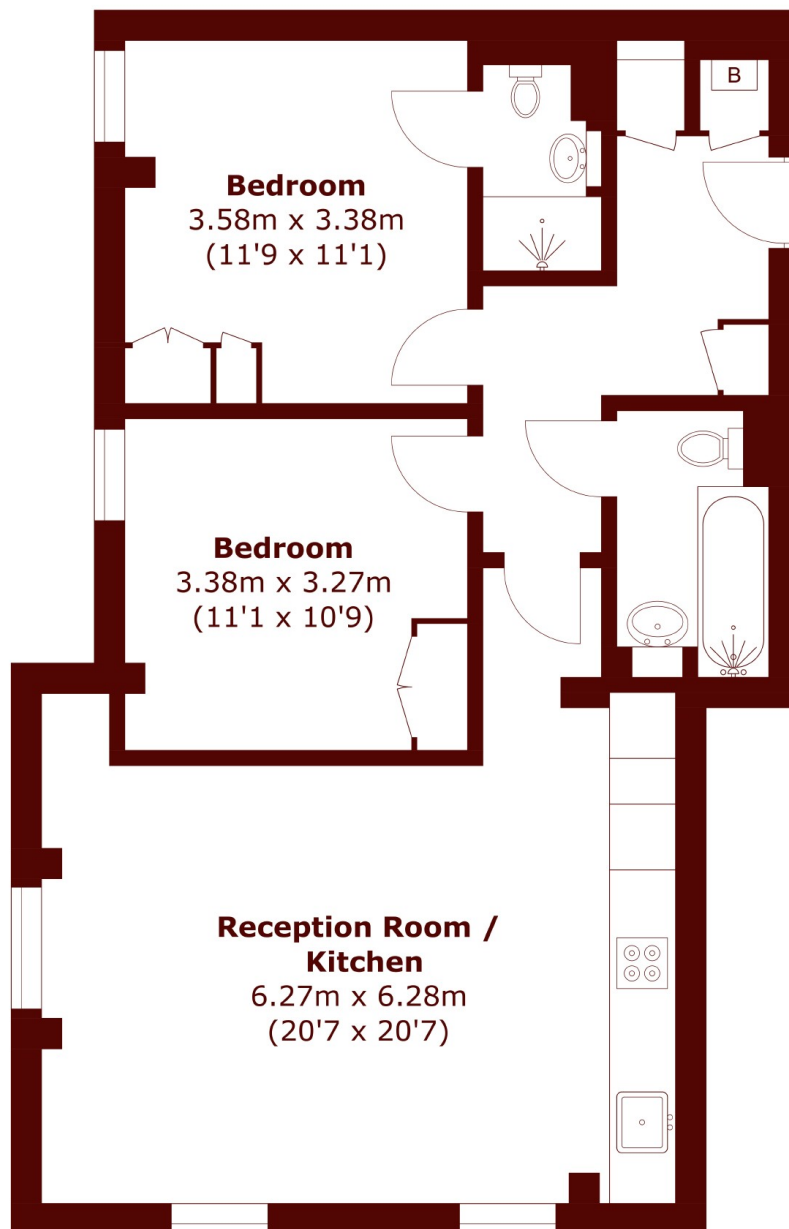
# ABOUT THE PROPERTY

An open planned living room and kitchen has views over the River Thames along with the principle bedroom having access to the en suite. There is a further double bedroom and family bathroom.

The riverside location of these apartments, looking out towards Kew Gardens and Kew Village itself, is unique in so many ways and benefits from being directly opposite from Kew Bridge railway station which is perfect for a quick commute to London Waterloo or socialising and shopping in the West End.



# STEP INSIDE KEW BRIDGE ROAD



Total area (approx.): 72.3 sq. m (778.2 sq. ft)

Chiswick  
020 8994 2556

Energy Rating: B We aim to make our particulars both accurate and reliable. However, they are not guaranteed; nor do they form part of an offer or contract. If you require clarification on any points then please contact us, especially if you're traveling some distance to view. Please note that appliances and heating systems have not been tested and therefore no warranties can be given as to their good working order

MARSH &  
PARSONS