



## Clapham Road, SW9

£3,850 Per calendar month

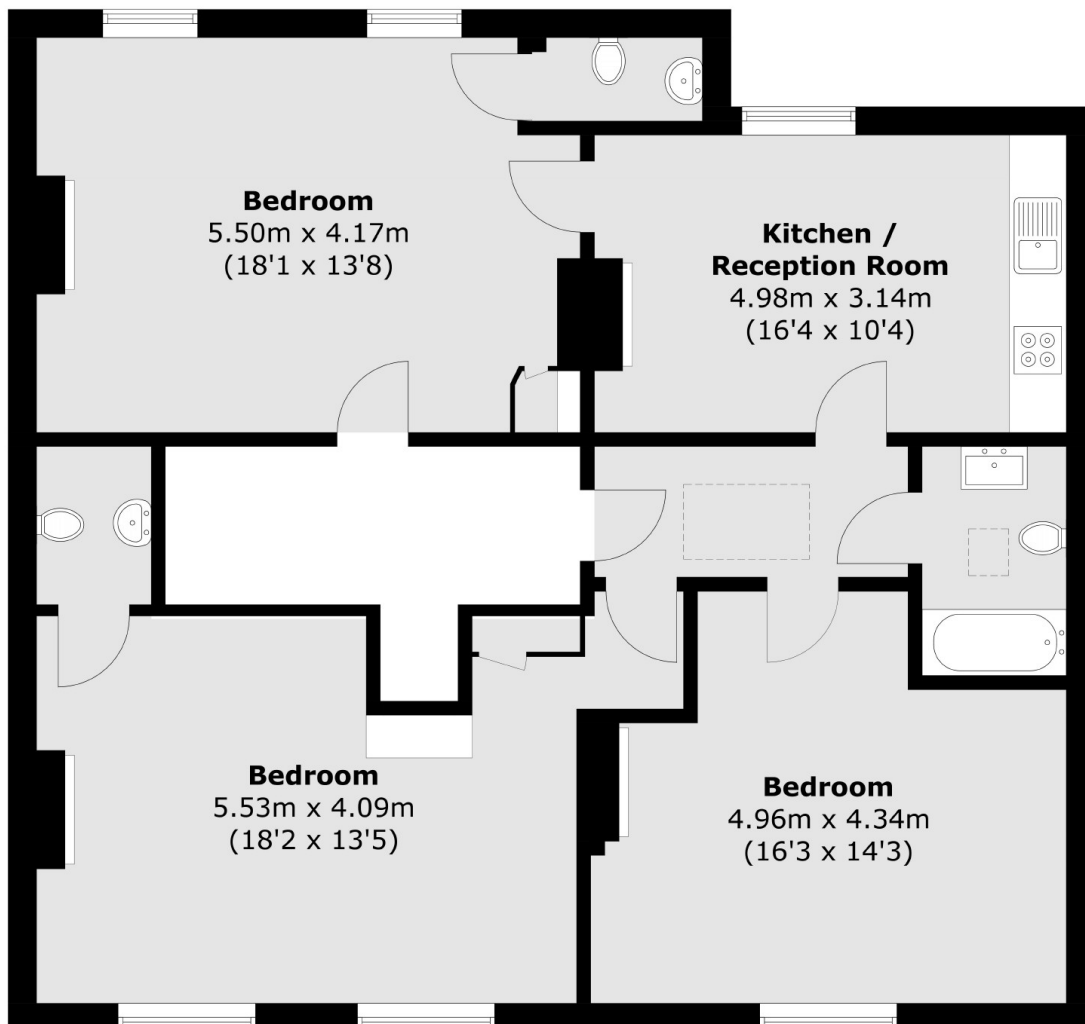
This recently refurbished three double bedroom, three bathroom conversion, in this Georgian Townhouse is finished to a high specification throughout and comes highly recommended for professional sharers commuting to Central London.

Situated on Clapham Road providing enviable access to Clapham North tube station and Stockwell tube station as well as the High Street's range of bars and restaurants.

### Features

- Three Double Bedrooms
- First Floor Flat
- Three Bathrooms
- Wooden Flooring
- Modern Specification
- Newly Refurbished

# Clapham Road, London, SW9



Total area (approx.): 96.5 sq. m (1,038.7 sq. ft)