



Spurstowe Terrace, E8

£585,000

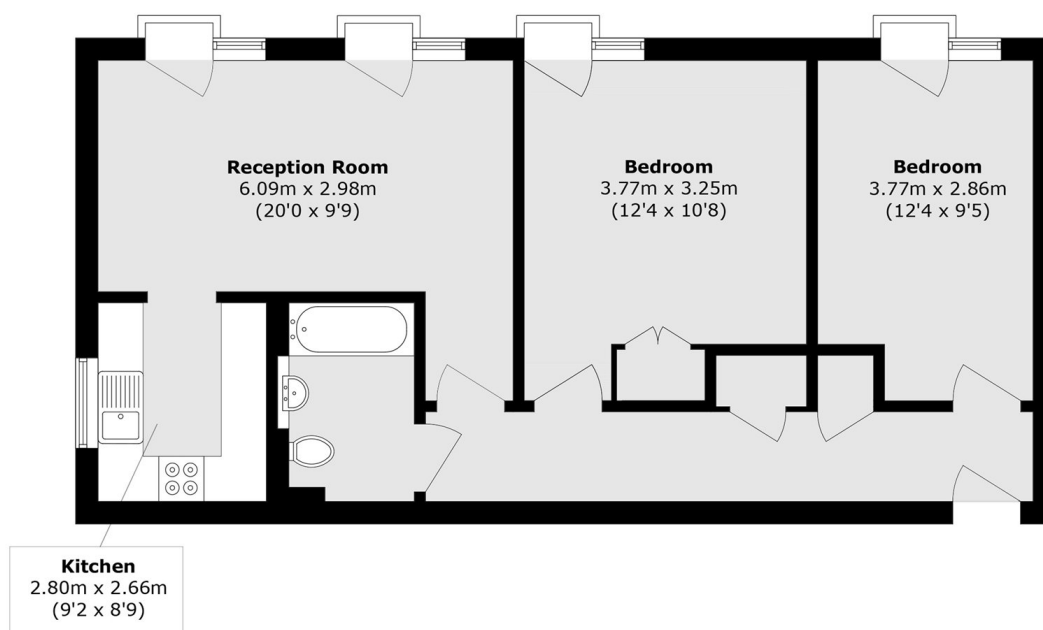
A modern two double bedroom apartment in a central E8 location. Measuring over 777 sq ft, the property offers a spacious open plan kitchen and living area with floor to ceiling windows and Juliet balconies, allowing plenty of natural light throughout. The shaker-style kitchen has been recently updated and the flat redecorated throughout. The development further benefits from communal gardens, bicycle storage and lift access. The property is offered to the market chain free.

Baxter Court is ideally located just moments from both Hackney Central and Hackney Downs Overground stations, providing direct access into the City. Positioned on a quiet residential street, the property is within easy walking distance of the many shops, bars, restaurants and cafés of Hackney Central and Broadway Market. The green open spaces of London Fields and Hackney Downs Park are both under half a mile away.

Features

- Two Double Bedrooms
- Modern Block
- Lift Access
- Chain Free
- Recently Renovated
- Bike Storage
- Communal Gardens

Spurstowe Terrace, London, E8



Total area (approx.): 72.7 sq. m (777.1 sq. ft)