

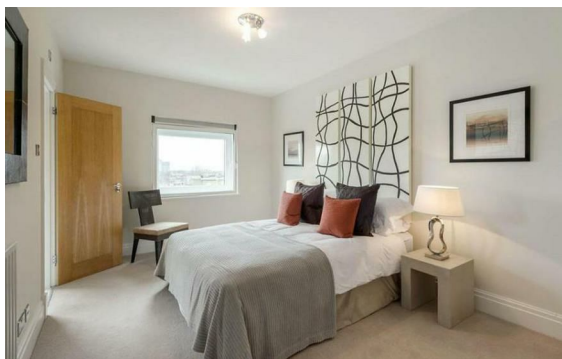


Grove End Road, St John's Wood, London, NW8

Rent £5,500 PCM

2 Bed | 2 Bath | 1 Reception

Please call us on 020 7724 2233 or email us info@newingtonstates.com to book a viewing.



60 Upper Montagu Street

London

W1H 1SN

020 7724 2233

info@newingtonstates.com

We are delighted to introduce this stunning two-bedroom apartment situated on the 4th floor within this popular portered building in the heart of St John's Wood. Further benefits include 24-hour concierge, well maintained communal gardens, air conditioning and passenger lift.

Century Court is located opposite the world famous Lord's Cricket Ground, within walking distance of St John's Wood High Street, St John's Wood Underground Station (Jubilee Line) and Regent's Park.

EPC rating: C

Energy Efficiency Rating: C

Agents Note: Whilst every care has been taken to prepare these particulars, they are for guidance purposes only. All measurements are approximate and are for general guidance purposes only and whilst every care has been taken to ensure their accuracy, they should not be relied upon and potential buyers/tenants are advised to recheck the measurements.

<http://www.newingtonstates.com>