



Michelle Court, Torrington Park, N12

£1,650 PCM

 1 Bedroom  1 Bathroom  1 Reception



Adam Hayes - North Finchley Office - Lettings 365 Ballards Lane, North Finchley, London, N12 8LL

Tel: 020 8445 4008 Email: [info@adam-hayes.co.uk](mailto:info@adam-hayes.co.uk) Web: [www.adam-hayes.co.uk](http://www.adam-hayes.co.uk)

# Michelle Court, Torrington Park, N12

## £1,650 PCM

 1 Bedrooms  1 Bathrooms  1 Receptions

### Key Features

- Newly decorated one bedroom flat
- Laminate wooden flooring
- Spacious reception room
- Separate kitchen
- Approx. 600 Sq ft
- Close to all amenities
- Close to tube

### Property Description

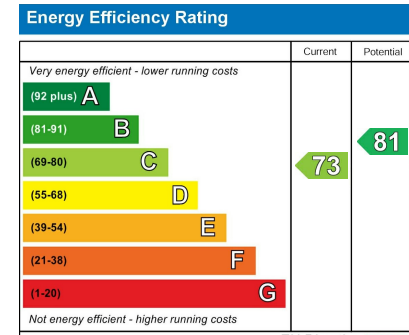
Situated just off North Finchley High Road, and conveniently positioned within easy reach of an excellent selection of shops, cafés, restaurants, and everyday amenities, is this spacious, newly decorated one-bedroom first-floor purpose-built apartment. Ideally located for commuters, the property is also within easy access of Woodside Park Underground Station (Northern Line), providing direct links into Central London. This bright and well-proportioned apartment offers generous living accommodation throughout, including an impressive reception room measuring approximately 15ft, providing an excellent space for both relaxing and entertaining, together with a spacious double bedroom of approximately 13ft. The property further benefits from a modern fitted kitchen, double glazing, and attractive laminate wood flooring throughout. The location is a particular highlight, with excellent transport connections including nearby bus routes, whilst green open spaces such as Friary Park are just a short distance away. Early viewing is highly recommended to fully appreciate the size, presentation, and superb location of this excellent apartment.

### Other Information

Council Tax Band: C  
Length of Tenancy: Long Let  
Deposit: £1,900

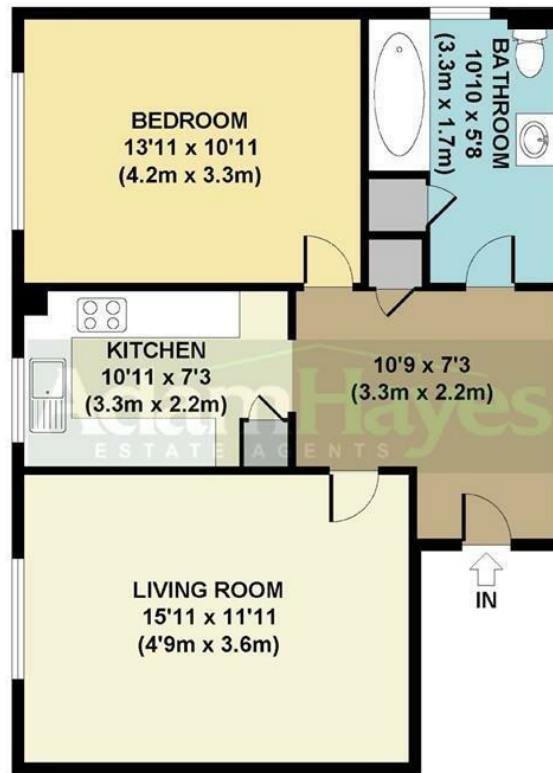
### Nearest Stations

- Woodside Park Tube
- West Finchley Tube



Adam Hayes - North Finchley Office - Lettings 365 Ballards Lane, North Finchley, London, N12 8LL

Tel: 020 8445 4008 Email: info@adam-hayes.co.uk Web: www.adam-hayes.co.uk



GROSS INTERNAL  
FLOOR AREA 620 SQ FT

APPROX. GROSS INTERNAL FLOOR AREA 620 SQ FT / 58 SQ M  
 Floorplans are for identification and guideline purposes only, not to scale.  
 Compliant with RICS code of measuring practice.  
 Floorplans supplied by [www.draftingfloorplan.com](http://www.draftingfloorplan.com)

These particulars, whilst believed to be accurate, are set out as a general outline only for guidance and do not constitute any part of an offer or contract. Intending purchasers or prospective tenants should not rely on them as statements or representation of fact, but must satisfy themselves by inspection or otherwise as to their accuracy. We have not carried out a detailed survey, not tested the services, appliances and specific fittings. Room sizes should not be relied upon for carpets and furnishings. The measurements given are approximate. No person in this firm's employment has the authority to make or give any representation or warranty in respect of the property.