



Brondesbury Road, NW6

£4,000 Per calendar month

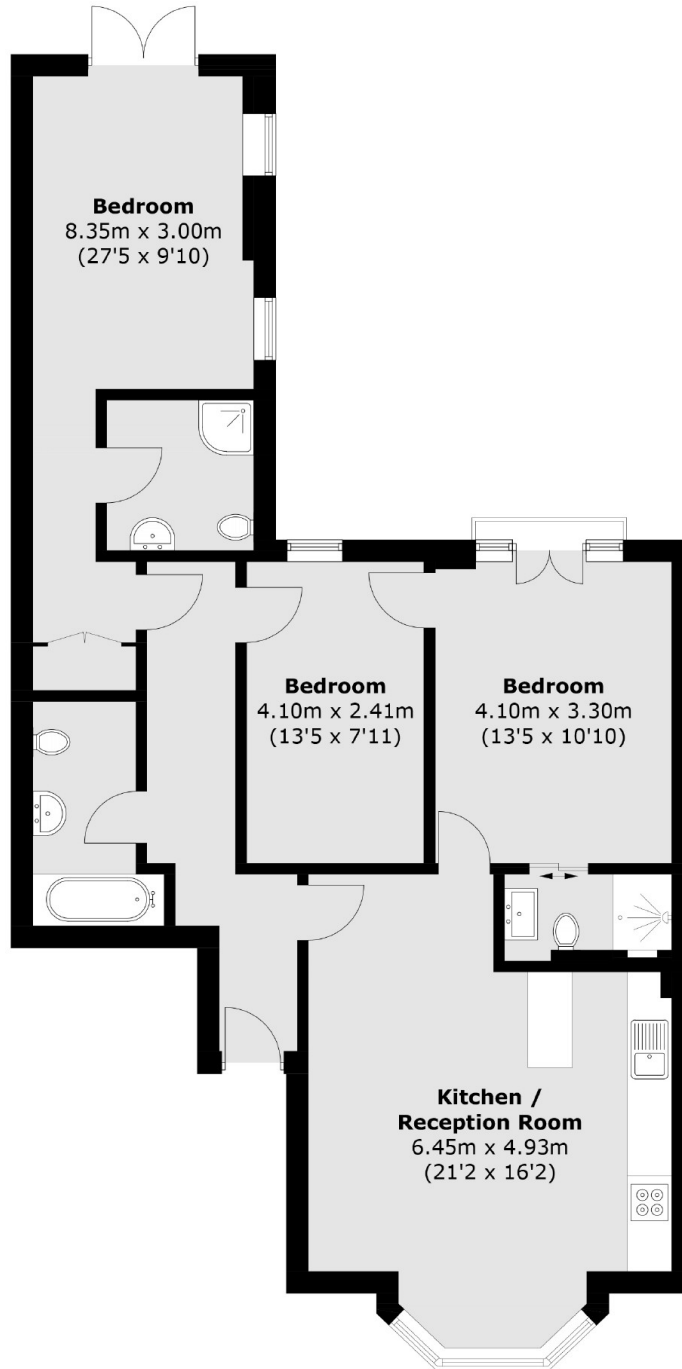
A recently renovated three-bedroom flat featuring a spacious rear garden. The property offers a modern open-plan kitchen, three generously sized double bedrooms, three bathrooms, and a contemporary design throughout.

Situated close to Queens Park where there are many shops and popular restaurants. Between Queens Park and Kilburn High Road overground stations.

Features

- Three Bedrooms
- Three Bathrooms
- Big Garden
- Newly Refurbished
- Off - Street Parking
- Pet Friendly

Brondesbury Road,
London, NW6



Total area (approx.): 90.7 sq. m (976.2 sq. ft)