



Guide Price

£450,000

Freehold

6x  4x  2x 

**Chapel Place, Ramsgate,
Kent, CT11**

OVER 60?

Secure this property
for up to **59% less!**

Wards
Helping you move forwards

Accommodation

GROUND FLOOR

Porch

Entrance Hallway

Dining Area : 15'4 x 15'1 (4.68m x 4.60m)

Kitchen : 16'4 x 15'4 (4.98m x 4.68m)

Lounge : 18'10 x 9'5 (5.74m x 2.87m)

Utility Room : 9'6 x 9'6 (2.90m x 2.90m)

BASEMENT

Cellar Area 1 : 14'4 x 13'5 (4.37m x 4.09m)

Cellar Area 2 : 10'9 x 6'4 (3.28m x 1.93m)

FIRST FLOOR

Landing

Living Room/Bedroom: 19'4 x 16'3 (5.90m x 4.96m)

Bedroom 1: 12'9 x 9'7 (3.89m x 2.92m)

En-Suite Bathroom

Bedroom 4 : 9'7 x 9'5 (2.92m x 2.87m)

Bathroom

Bathroom 5: 9'2 x 9'2 (2.80m x 2.80m)

SECOND FLOOR

Landing

Bedroom 2: 12'9 x 10'9 (3.89m x 3.28m)

En-Suite Shower Room

Bedroom 3: 11'3 x 10'2 (3.43m x 3.10m)

En-Suite Shower Room

Bedroom 6 : 9'9 x 5'6 (2.97m x 1.68m)

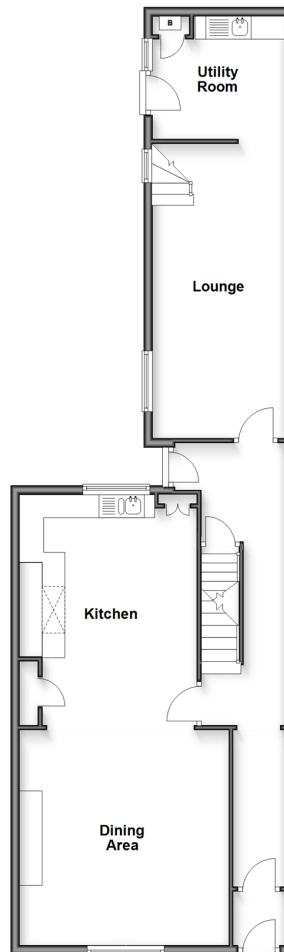
THIRD FLOOR

Loft Room : 19'8 x 8'9 (6.00m x 2.67m)

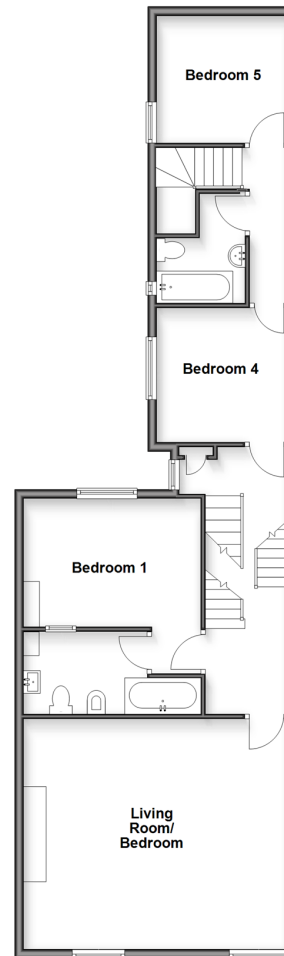
OUTSIDE

Garden to Rear

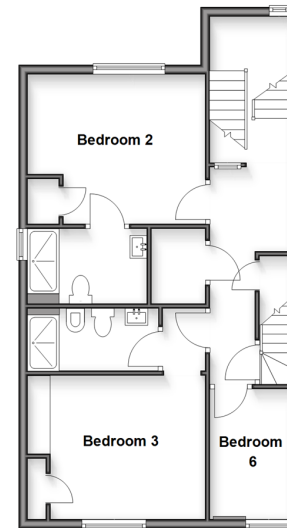
Ground Floor
Approx. 87.2 sq. metres (939.1 sq. feet)



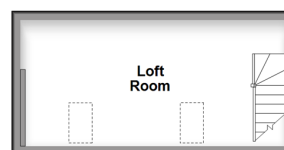
First Floor
Approx. 87.5 sq. metres (942.3 sq. feet)



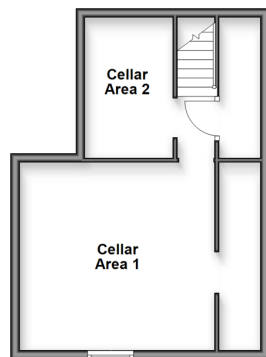
Second Floor
Approx. 89.0 sq. metres (955.6 sq. feet)



Third Floor
Approx. 16.0 sq. metres (172.7 sq. feet)



Basement
Approx. 34.1 sq. metres (366.6 sq. feet)





Main features

- Impressive and well presented period property
- Original features throughout
- Extensive accommodation
- Being sold with no onward chain
- Newly renovated throughout
- Close to all local amenities including Ramsgate town



Nearest Schools

Primary Schools: St Ethelbert's Catholic Primary 0.4 miles, Ramsgate, Christ Church C of E Junior School 0.5 miles, St Laurence in Thanet C of E Junior School 0.6 miles
Secondary Schools: Chatham and Clarendon House Grammar School for Boys 0.0 miles



Transport Information

Train Stations: Ramsgate 0.5 miles, Dumpton Park 0.8 miles, Broadstairs 1.9 miles



Address

Chapel Place, Ramsgate, Kent, CT11



Directions

For directions to this property please contact us.



Wards
Helping you move forwards

Call Ramsgate Branch 01843 580314 ■ wardsofkent.co.uk



- Legal advice should be taken to verify fixtures/fittings, planning, alterations and/or lease details
- Appliances & services are untested, dimensions are approximate and floor plans are not to scale
- Through a Homewise Home For Life Plan people aged 60+ can secure this property for up to 59% less, by purchasing a Lifetime Lease



11434855/20260203/AG/AP