



## Nevern Square, SW5 £3,000 PCM

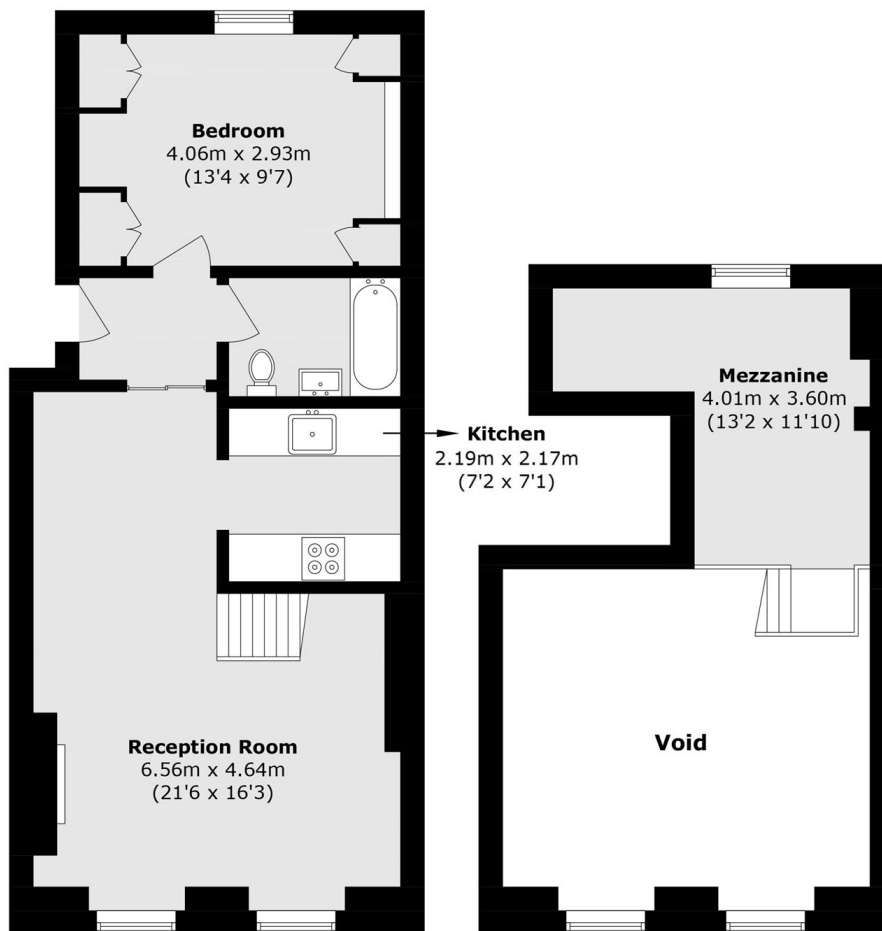
A large one bedroom flat located on the raised ground floor overlooking the communal gardens. The flat has a mezzanine level which would be perfect for extra storage or an office space.

Arguably Earl's Courts premier garden square, Nevern Square is nestled quietly away from the hustle and bustle of Earls Court Road, whilst remaining comfortably within walking distance of the amenities and tube.

### Features

- One Bedroom
- One Bathroom
- Mezzanine Level
- Raised Ground Floor
- Built In Storage
- Garden Square

# Nevern Square, London, SW5



**Ground Floor**

**Mezzanine**

Total area (approx.): 59.1 sq. m (636.1 sq. ft)  
(Including Mezzanine and Excluding Void)