



DARYL HILL POWERED BY **exp** TM UK

@ daryl.hill@exp.uk.com

darylhill.exp.uk.com

📞 07921 060 390

1 Fern Lawn, Abbeydale

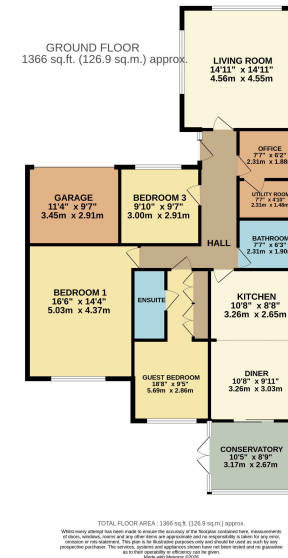
£525,000

🛏️ 4 🚿 2 🛋️ 2

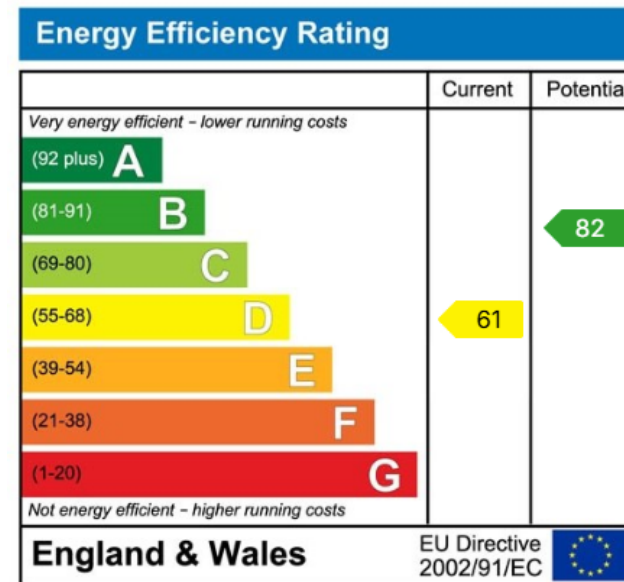


- IMPRESSIVE DETACHED BUNGALOW
- 3 LARGE DOUBLE BEDROOMS
- KITCHEN DINER AND CONSERVATORY
- LARGE LIVING ROOM AND OFFICE
- UTILITY ROOM
- DOUBLE WIDTH GARAGE
- AMPLE PARKING
- GARDENS TO FRONT SIDE AND REAR.
- BATHROOM AND EN-SUITE
- REF DH0109





Daryl Hill powered by eXp is delighted to present to the market this remarkably sized bungalow in this popular suburban location. The much extended and improved home provides flexible accommodation which can be configured to suit a variety of needs with 3 large double bedrooms, complemented by three reception spaces and conservatory. The home has the unusual luxury of an en-suite shower room to complement the family bathroom and the property is completed with a spacious utility room. The outside has also been improved with a block paved driveway parking leading to double width garage and with gardens to front, side and rear. Quote ref DH0109



eXp World UK Ltd is a registered company at Level 37, 25 Canada Square, London, E14 5LQ.

Registered company number is 12016573. VAT Registration Number is 327 4120 29