

Head Office:
Dixon Kelley Estate Agents
1 Penn Court
Station Road, West Moors
Dorset. BH22 0JJ

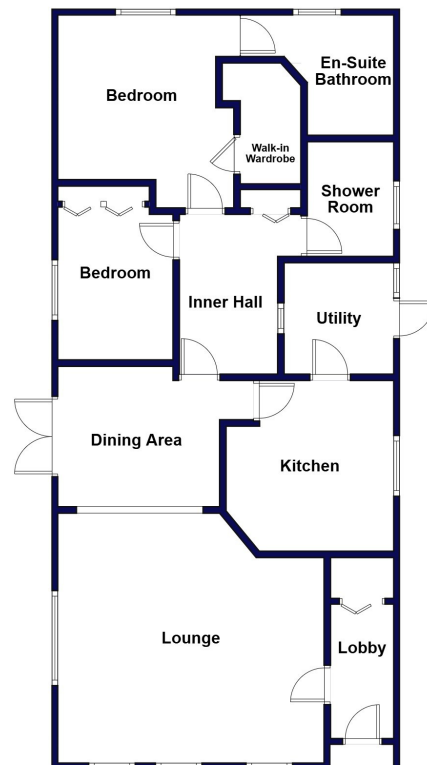
DORSET PARK HOMES

DRAFT

www.dorsetparkhomes.com

Telephone: 01202 877511

41 Oaklands Park, Crossways, Dorchester. DT2 8JQ



This drawing has been prepared for diagrammatic purpose only. Not to scale.

2-Bedroom Park Home - approx 44' x 20'

Accommodation & approximate room dimensions:

- Entrance Lobby: Cloaks cupboard.
- Lounge: approx 15'6" x 14'7". Feature fireplace.
- Dining Area: approx 9'5" x 8'2". Double doors to garden.
- Kitchen: approx 10' x 9'6". A good range of floor & wall cupboards. Built-in double oven, hob & cooker hood. Fitted fridge/freezer.
- Utility Room: approx. 6'5" x 6'6". Space for washing machine & dishwasher. Wall mounted combination gas boiler. Door to garden.
- Spacious Inner Hall: Linen cupboard. Hatch to roof.
- Bedroom 1: approx 10'3" x 10'. Walk-in wardrobe.
- En-Suite Bathroom: Corner bath, wash basin & WC
- Bedroom 2: approx 10' x 6'9". Fitted wardrobe.
- Shower Room: shower cubicle, wash basin & WC.
- Gas Central Heating System (untested)
- PVCu Double-Glazing
- Private Patio Garden with side gates.
- GARAGE: approx 17'10" x 8'6" Electric supply.
- Age Restriction 50+ Pets considered.
- Popular, well maintained Residential Park near to local amenities.

'Pet Friendly' Park



Pitch Fee: approx £180.24 per month
Subject to Annual Review
Council Tax Band: 'B'

Tenure: 1983 Mobile Homes Act Agreement

Price: £140,000

VIEWING STRICTLY BY APPOINTMENT WITH THE VENDOR'S AGENT Dorset Park Homes 01202 877511

IMPORTANT NOTE: These particulars are believed to be correct but their accuracy is not guaranteed. They do not form part of any contract. Nothing in these particulars shall be deemed to be a statement that the property is in good structural condition or otherwise, nor that any of the services, appliances, equipment or facilities are in good working order or have been tested. Purchasers should satisfy themselves on such matters prior to purchase Ref.W05237

The recommended specialist in Park Home sales
Proprietor: Simon Dixon

