



High road, Willesden Green, NW10
£2,650 pcm

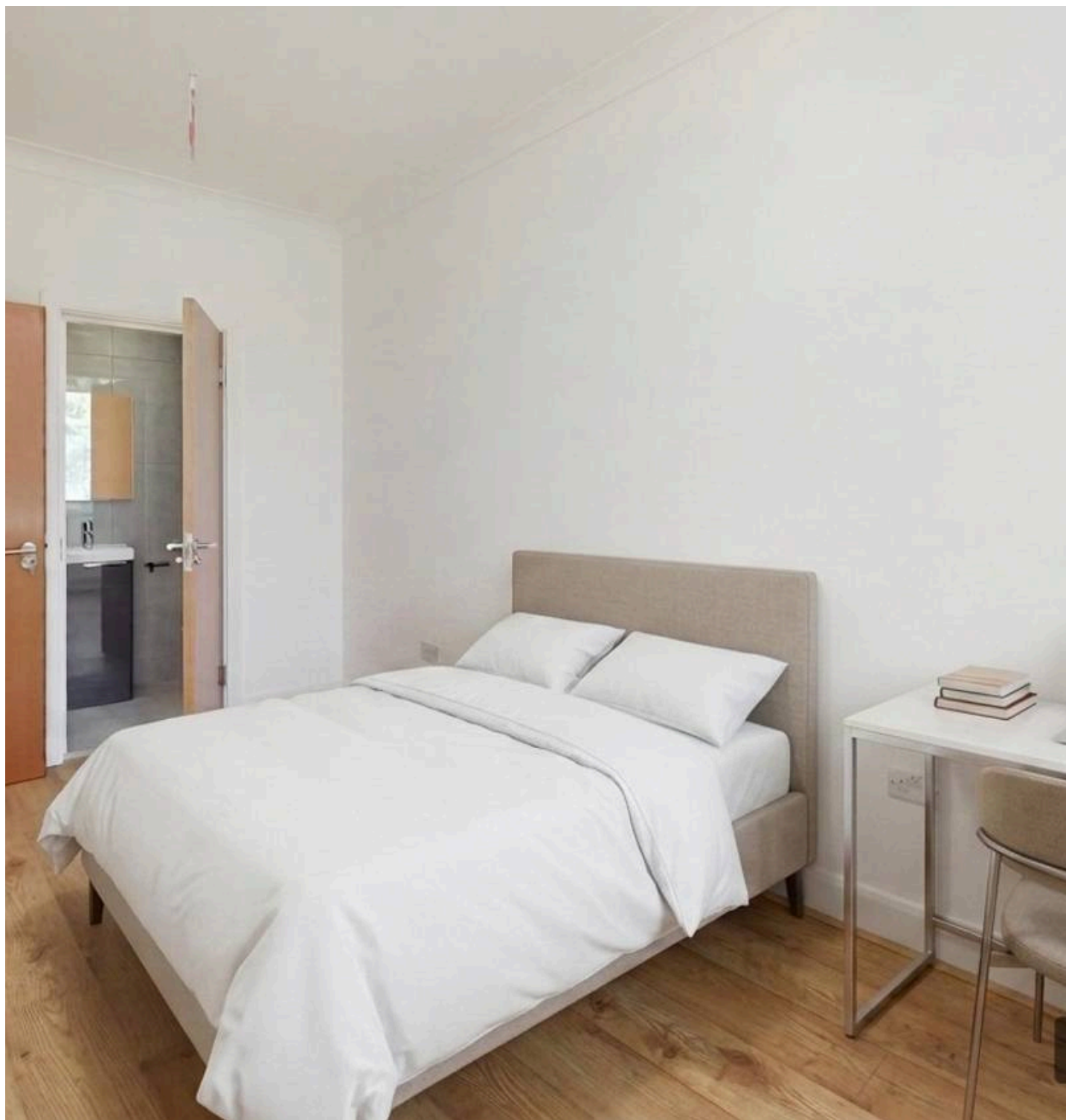
High road, Willesden Green, NW10

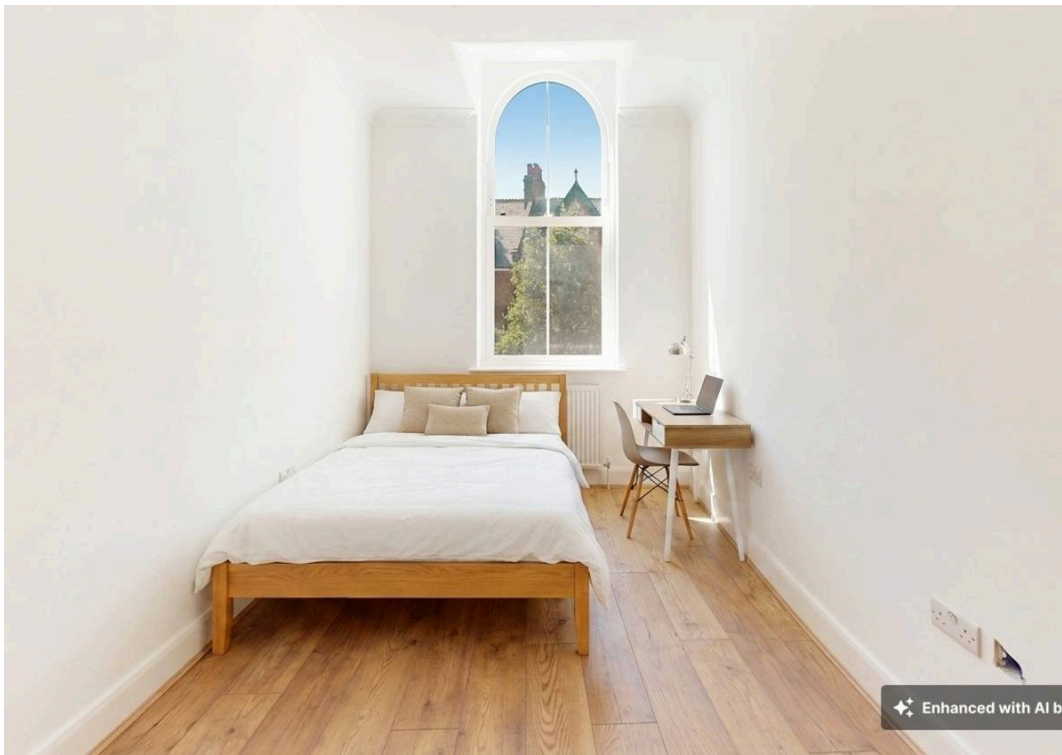
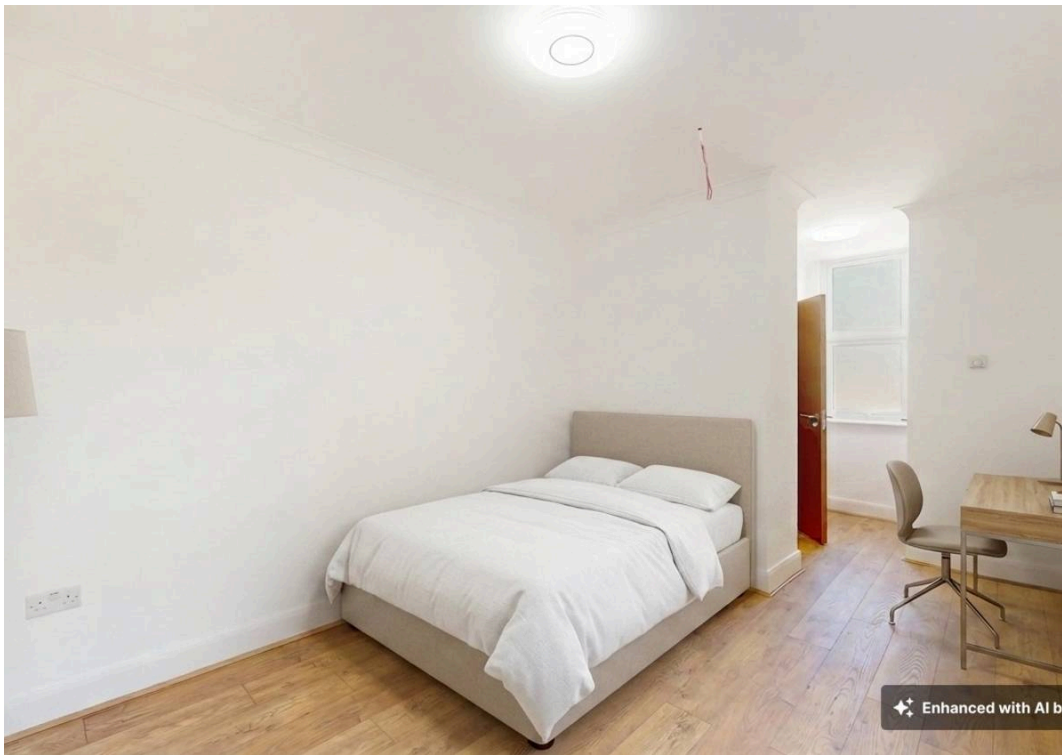
Situated in the heart of the vibrant Willesden Green High Road, this beautifully renovated three-bedroom, three-bathroom property offers contemporary living in one of North West London's most sought-after locations. Boasting a high-spec finish throughout, this spacious home has been thoughtfully designed to provide both comfort and practicality, making it ideal for sharers.

The property comprises three generously sized bedrooms, each offering ample natural light and storage space. All three bathrooms are modern and fully tiled, including three en-suites, ensuring added privacy and convenience.

Located just moments from Willesden Green Underground Station (Jubilee Line), the property offers excellent transport links into Central London and beyond. You'll also find a wide range of shops, cafes, restaurants, and local amenities on your doorstep, as well as nearby parks and green spaces for outdoor enjoyment.

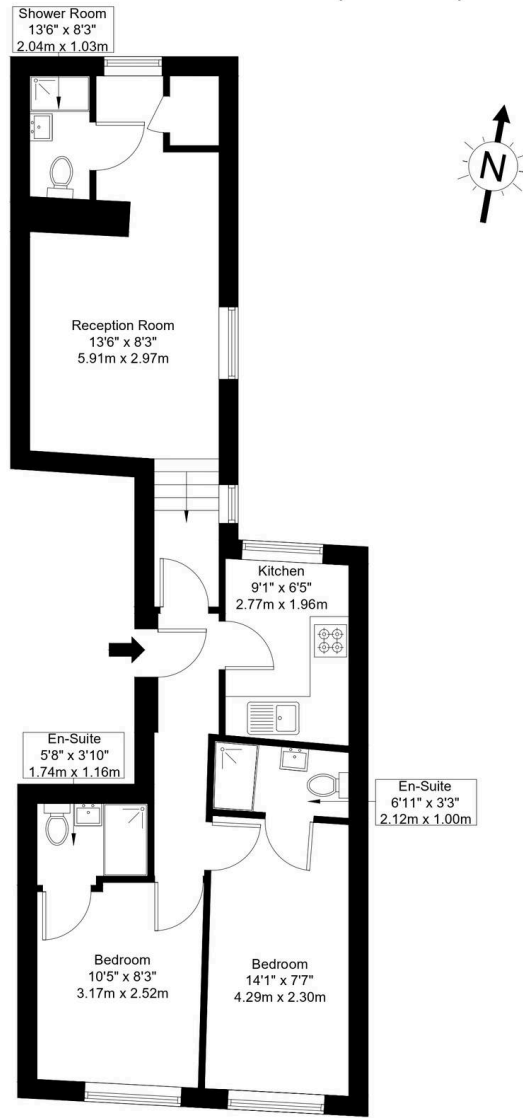
This is a rare opportunity to rent a turnkey home in a prime location – early viewing is highly recommended.





High Road, NW10 2PR

Approx Gross Internal Area = 51.69 sq m / 556 sq ft



First Floor

Ref :

Copyright **BLEU PLAN**

The Floor plan is not to scale and measurements and areas shown are approximate and therefore should be used for illustrative purposes only. The plan has been prepared in accordance with the RICS code of Measuring Practice and whilst we have confidence in the information produced it must not be relied on. Maximum lengths and widths are represented on the floor plan. If there is any aspect of particular importance, you should carry out or commission your own inspection of the property.
Copyright @ BleuPlan



Black Katz

22 West Hampstead Mews, London - NW6 3BB

02073285000 • Thomas@blackkatz.com • blackkatz.com/