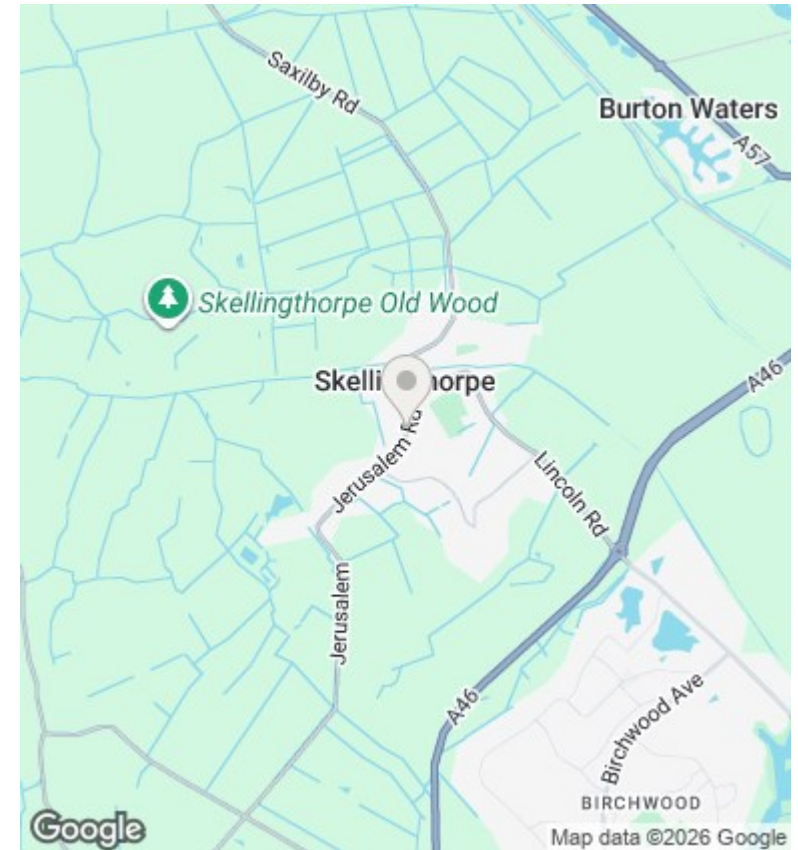
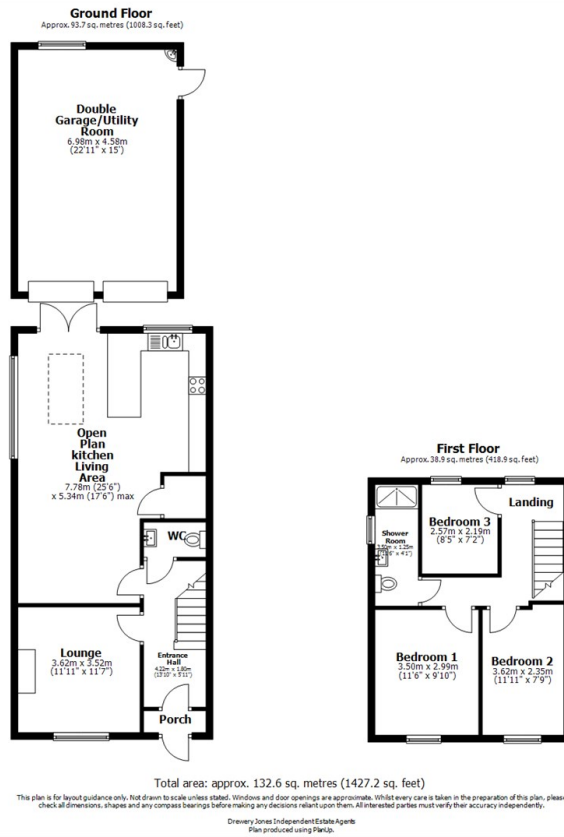




## 28, Jerusalem Road, Skellingthorpe, LN6 5TW

Asking Price £390,000

- Immaculate 3 Bedroom House
- Separate Lounge
- Detached Double Garage
- EPC Rating C
- Newly Renovated Throughout
- Separate Downstairs WC
- Large Garden and Automatic Security Gates
- Large Open Plan Kitchen and Living
- Large Shower Room
- Council Tax Band B



## Directions

## Viewings

Viewings by arrangement only. Call 01522 396059 to make an appointment.

## Council Tax Band

B

## EPC Rating:

C

